

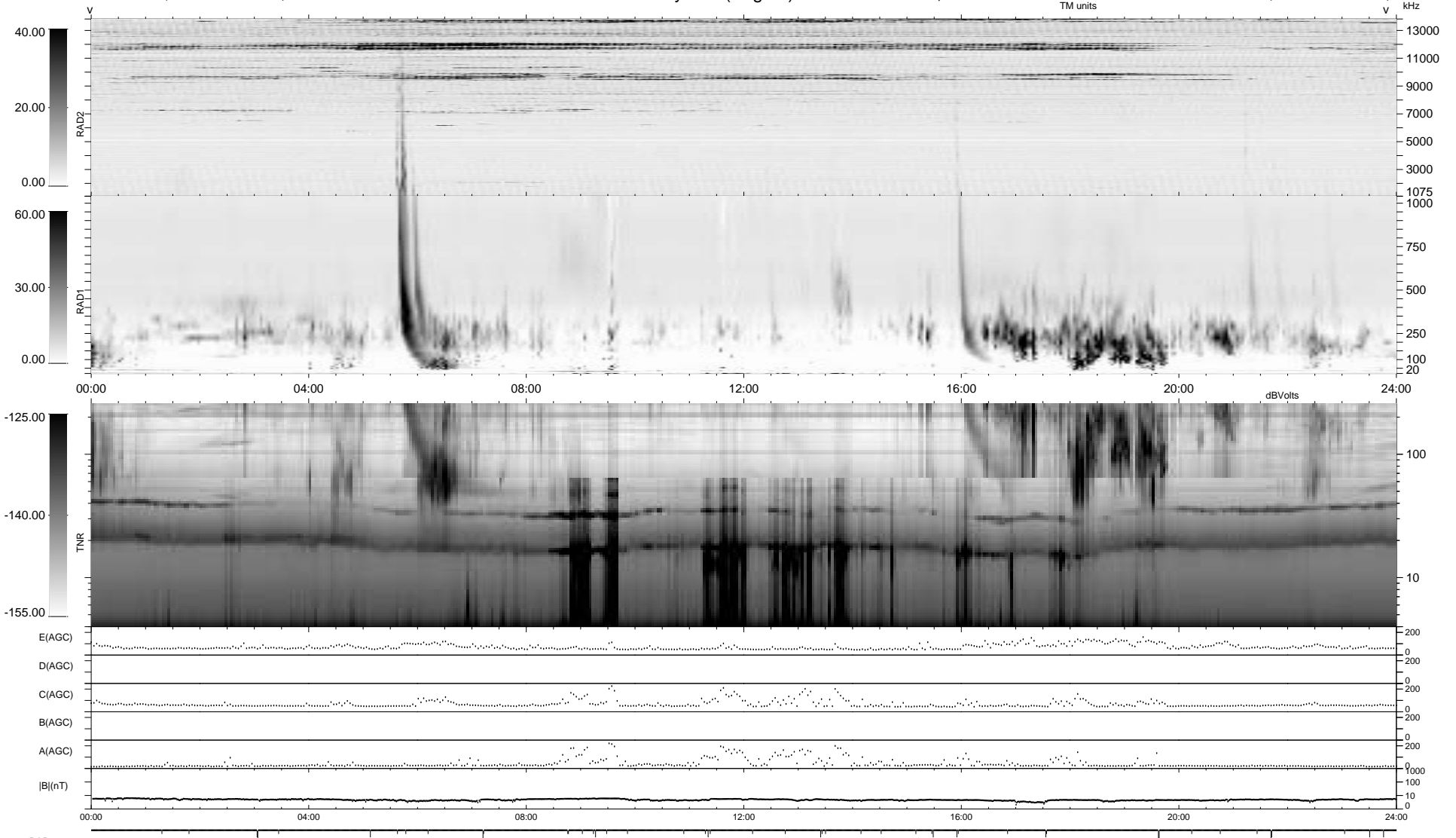
47 bad + 1831 good MF/1878MF projected (97%) - 0 missing MFs
 Avg interval = 180 secs
 Re = - 98.00 (97.65, -5.96, -5.81 GSE)

1.7d VMS-SunOS LZ version = v01

DAILY Wed Sep 24, 2008

Re = 98.92 (98.67, -4.17, -5.64 GSE)

WIND/WAVES Summary Plot (Page 1) for 30-AUG-1996, DOY = 243



```

RAD2
Antenna Ey .....
Mode LIN(1) .....
SUM/SEP SUM .....
Toggle OFF .....

RAD1
Antenna Ex .....
Mode LIS(2,4) .....
SUM/SEP SUM .....
Toggle OFF .....

TNR
Antenna ExEy .....
Mode A-32 .....
Sweep ACE .....
  
```