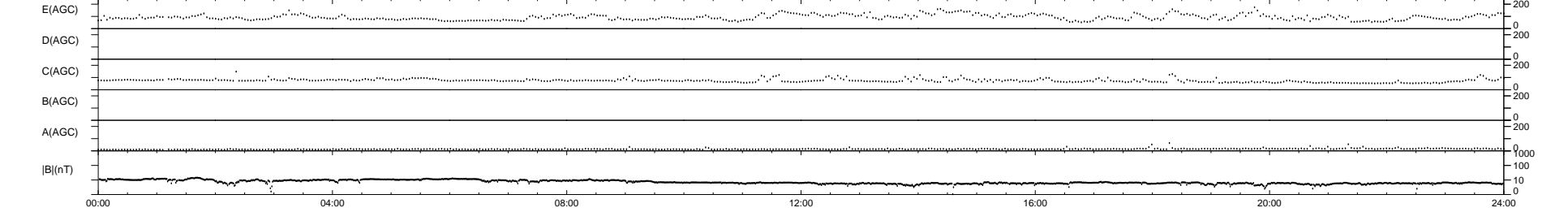
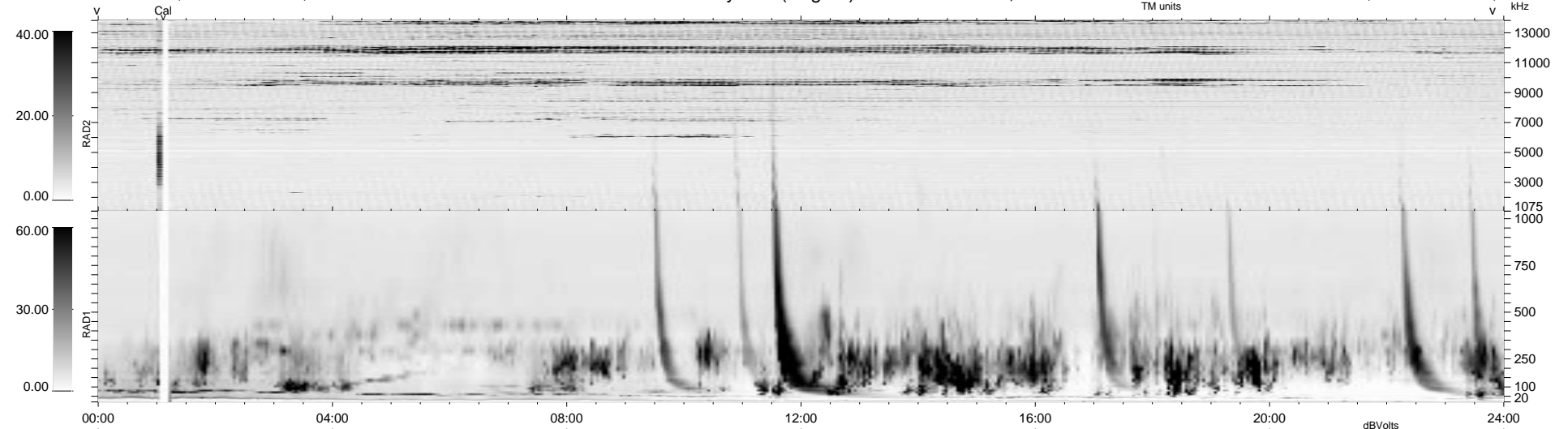


22 bad + 1857 good MF/1879MF projected (98%) - 0 missing MFs  
 Avg interval = 180 secs  
 Re = -96.10 (95.61, -7.74, -5.91 GSE)

1.7d VMS-SunOS LZ version = v01

WIND/WAVES Summary Plot (Page 1) for 29-AUG-1996, DOY = 242

DAILY Wed Sep 24, 2008  
 Re = 97.99 (97.64, -5.98, -5.81 GSE)



```

RAD2
Antenna Ey .....
Mode LIN(1) .....
SUM/SEP SUM .....
Toggle OFF .....

RAD1
Antenna Ex .....
Mode LIS(2/4) .....
SUM/SEP SUM .....
Toggle OFF .....

TNR
Antenna ExEy .....
Mode A-32 .....
Sweep ACE .....
  
```