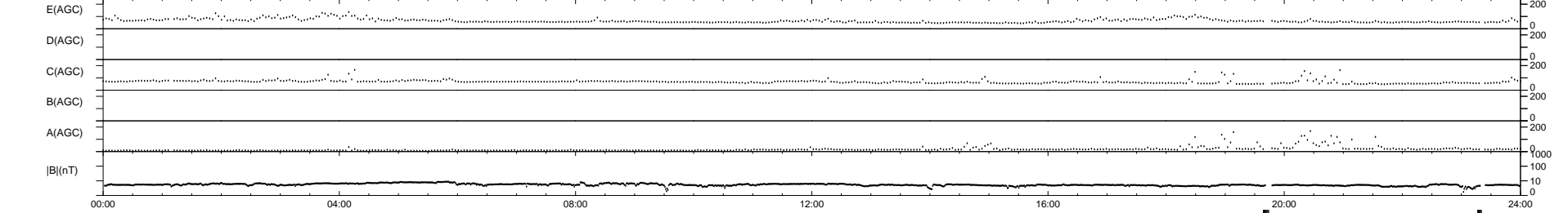
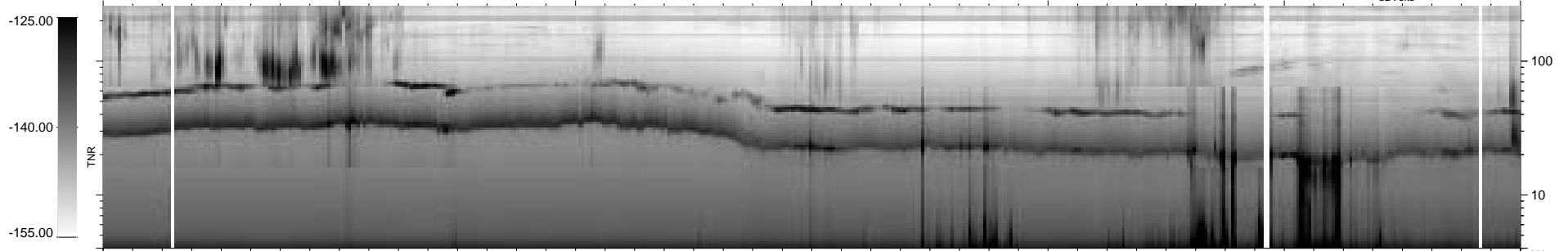
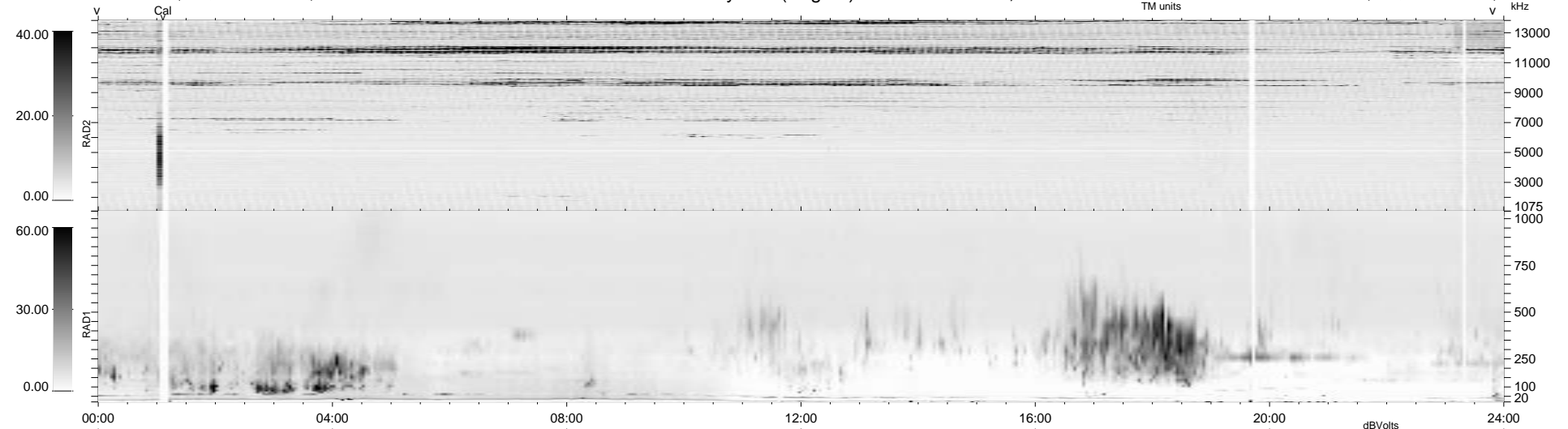


22 bad + 1842 good MF/1878MF projected (98%) - 14 missing MFs  
 Avg interval = 180 secs  
 Re = 89.19 (88.28, -11.25, -5.87 GSE)

1.7d VMS-SunOS LZ version = v01

WIND/WAVES Summary Plot (Page 1) for 27-AUG-1996, DOY = 240

DAILY Wed Sep 24, 2008  
 Re = 93.17 (92.49, -9.51, -5.93 GSE)



RAD2  
 Antenna Ey  
 Mode LIN(1)  
 SUM/SEP SUM  
 Toggle OFF

RAD1  
 Antenna Ex  
 Mode LIS(2/4)  
 SUM/SEP SUM  
 Toggle OFF

TNR  
 Antenna ExEy  
 Mode A-32  
 Sweep ACE