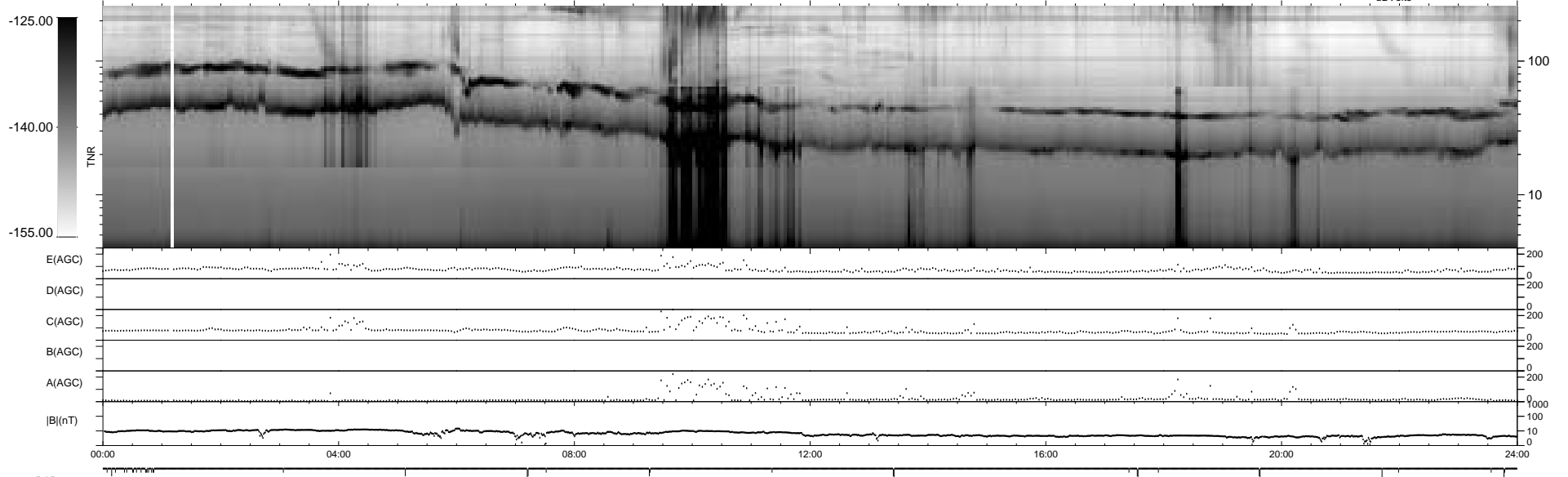
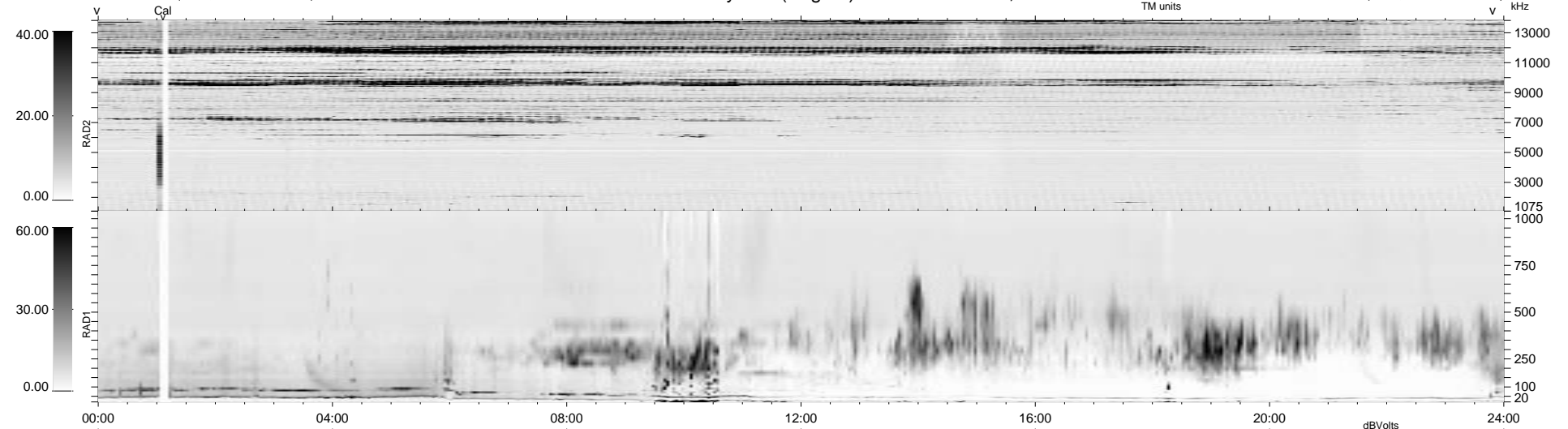


37 bad + 1841 good MF/1878MF projected (98%) - 0 missing MFs
 Avg interval = 180 secs
 Re = - 59.14 (56.22, -17.81, -4.46 GSE)

1.7d VMS-SunOS LZ version = v01
 DAILY Wed Sep 24, 2008
 Re = 69.23 (67.07, -16.39, -5.04 GSE)

WIND/WAVES Summary Plot (Page 1) for 23-AUG-1996, DOY = 236



```

RAD2
Antenna Ey .....
Mode LIN(1) .....
SUM/SEP SUM .....
Toggle OFF .....

RAD1
Antenna Ex .....
Mode LIS(2/4) .....
SUM/SEP SUM .....
Toggle OFF .....

TNR
Antenna ExEy .....
Mode A-32 .....
Sweep ACE .....
  
```