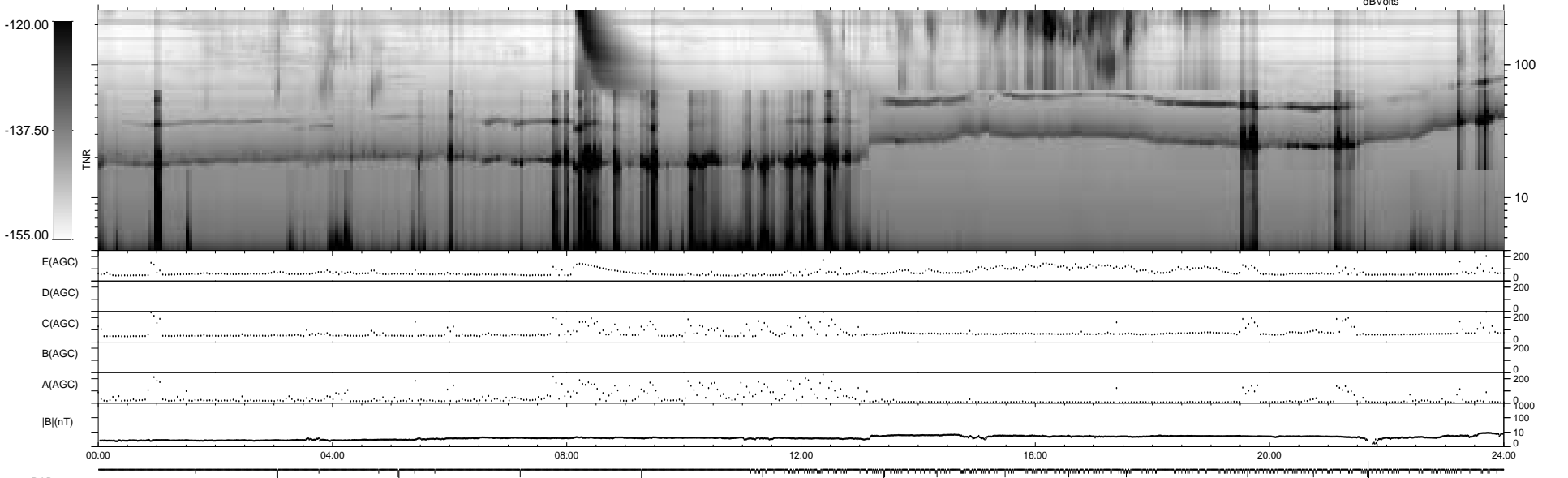
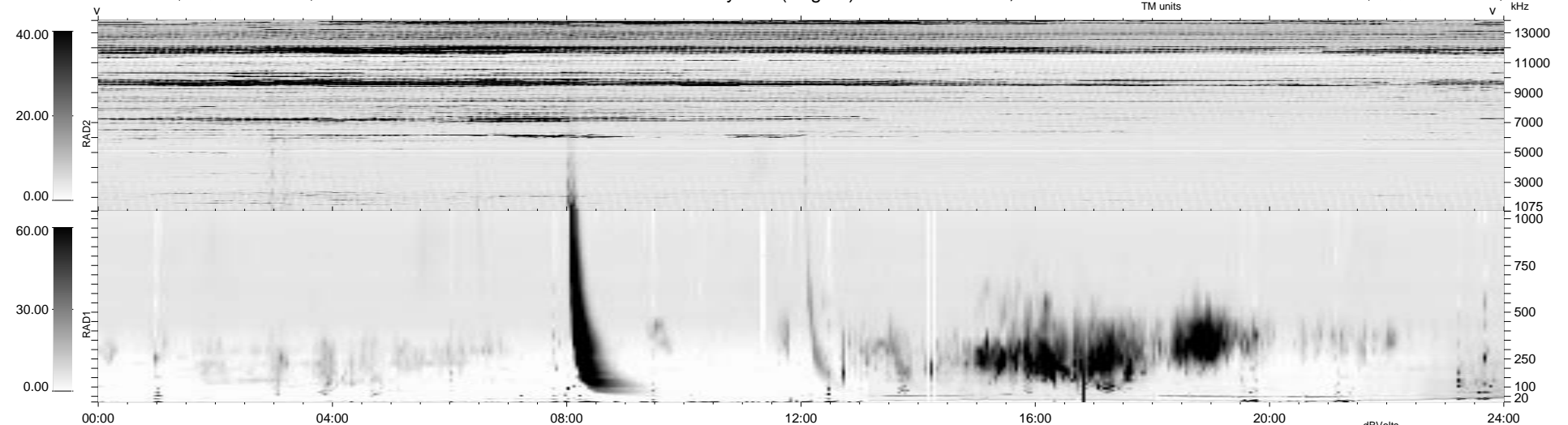


266 bad + 1611 good MF/1878MF projected (85%) - 1 missing MF
 Avg interval = 180 secs
 Re = - 46.27 (42.20, -18.64, -3.63 GSE)

1.7d VMS-SunOS LZ version = v02

WIND/WAVES Summary Plot (Page 1) for 22-AUG-1996, DOY = 235

DAILY Wed Sep 24, 2008
 Re = 59.06 (56.14, -17.82, -4.46 GSE)



RAD2
 Antenna Ey
 Mode LIN(1)
 SUM/SEP SUM
 Toggle OFF

RAD1
 Antenna Ex
 Mode LIS(2,4)
 SUM/SEP SUM
 Toggle OFF

TNR
 Antenna ExEy
 Mode A-32
 Sweep ACE