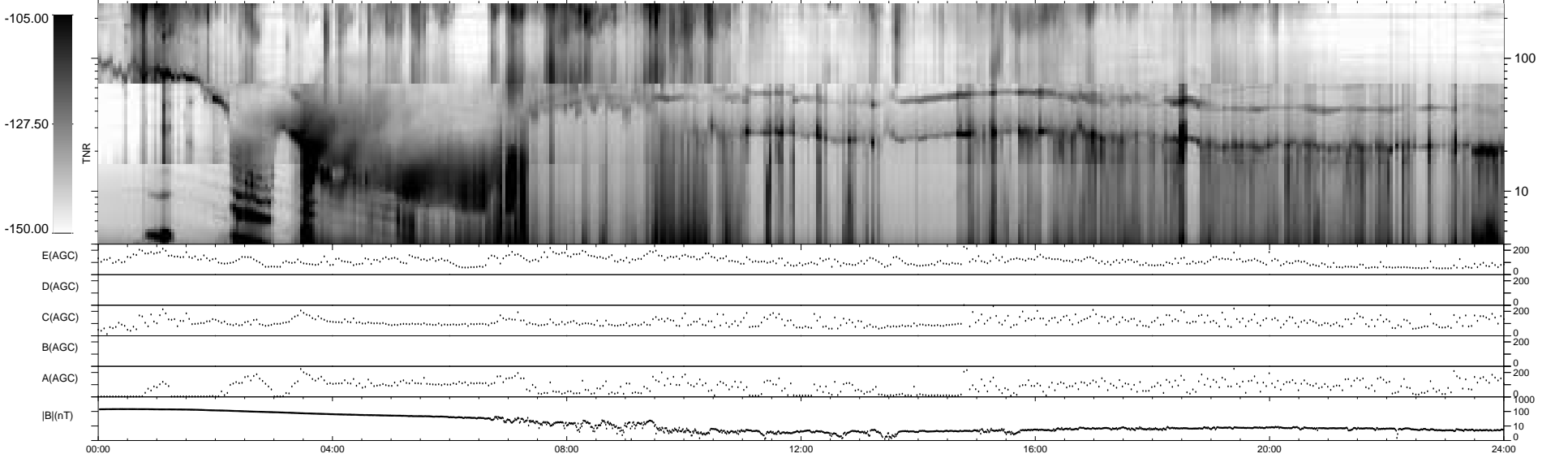
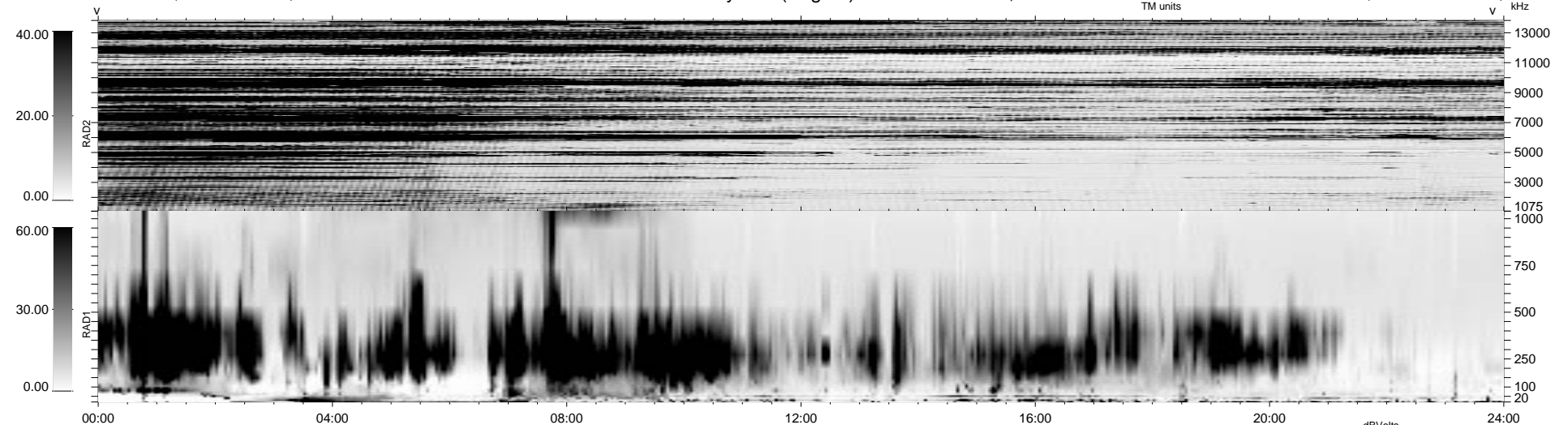


24 bad + 1854 good MF/1878MF projected (98%) - 0 missing MFs
 Avg interval = 180 secs
 Re = 5.68 (-5.63, 0.62, 0.40 GSE)

1.7d VMS-SunOS LZ version = v01

WIND/WAVES Summary Plot (Page 1) for 20-AUG-1996, DOY = 233

DAILY Wed Sep 24, 2008
 Re = 28.93 (22.87, -17.56, -2.34 GSE)



RAD2
 Antenna Ey
 Mode LIN(1)
 SUM/SEP SUM
 Toggle OFF

RAD1
 Antenna Ex
 Mode LIS(0.2)
 SUM/SEP SUM
 Toggle OFF

TNR
 Antenna ExEy
 Mode A-32
 Sweep ACE