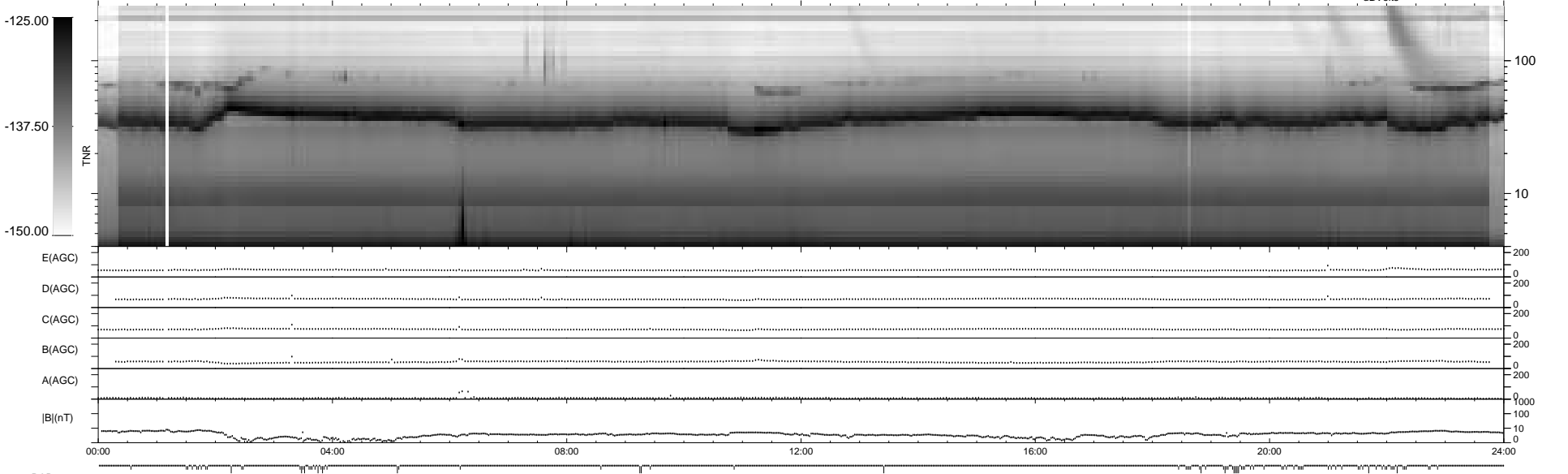
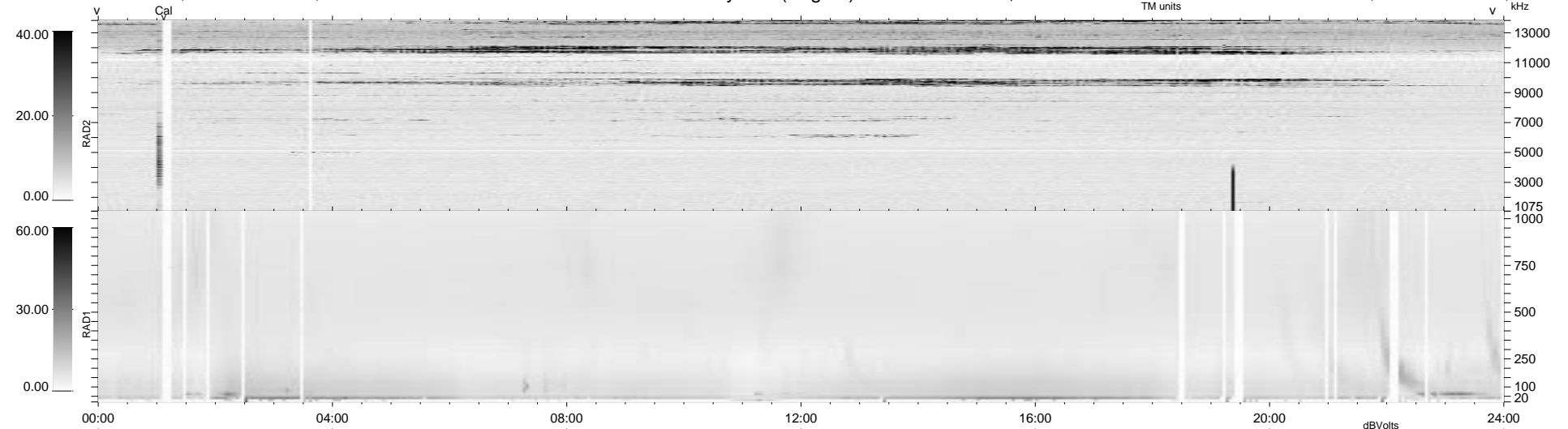


87 bad + 852 good MF/939MF projected (90%) - 0 missing MFs
 Avg interval = 180 secs
 Re = 118.13 (114.96, 26.96, -3.36 GSE)

1.7d VMS-SunOS LZ version = v01
 DAILY Wed Sep 24, 2008
 Re = 110.84 (107.07, 28.51, -3.21 GSE)

WIND/WAVES Summary Plot (Page 1) for 11-AUG-1996, DOY = 224



```

RAD2
Antenna Ey .....
Mode LIN(1) .....
SUM/SEP SUM .....
Toggle OFF .....

RAD1
Antenna Ex .....
Mode LIS(0.2) .....
SUM/SEP SUM .....
Toggle OFF .....

TNR
Antenna ExEy .....
Mode A-32, A-16 .....
Sweep ACE, ABCDE .....
  
```