

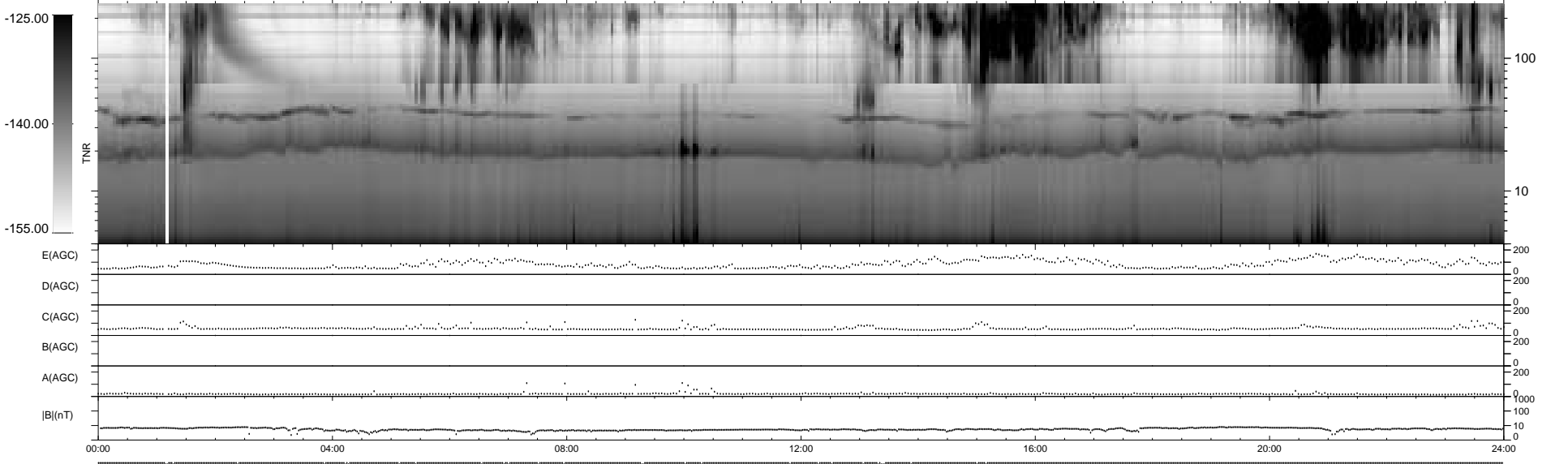
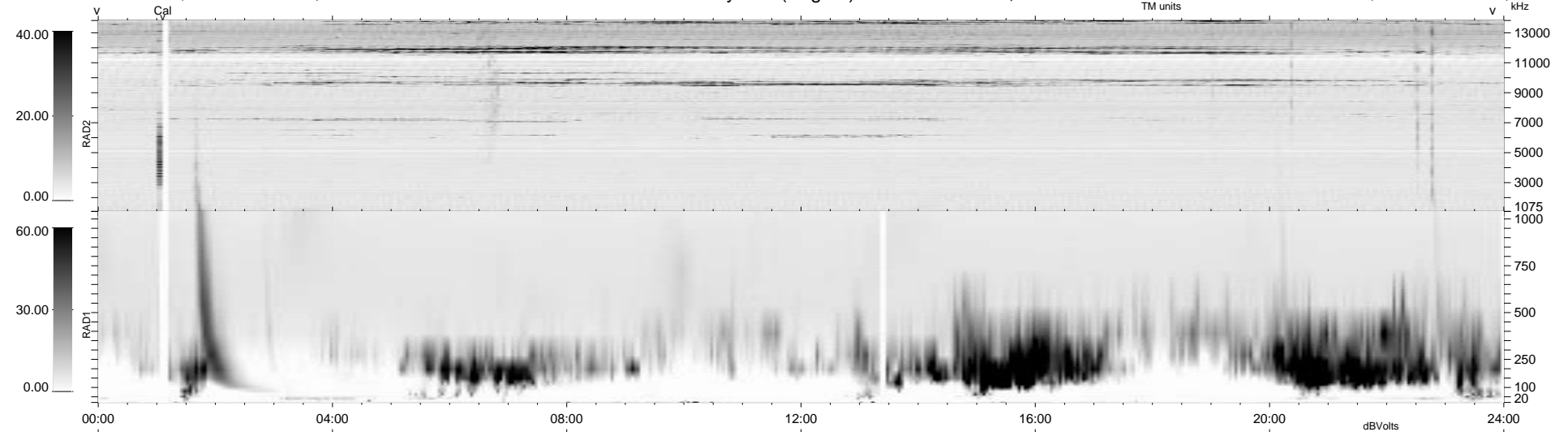
29 bad + 910 good MF/939MF projected (96%) - 0 missing MFs  
 Avg interval = 180 secs  
 Re = - 168.47 (167.54, 17.35, -3.76 GSE)

1.7d VMS-SunOS

LZ version = v01

WIND/WAVES Summary Plot (Page 1) for 01-AUG-1996, DOY = 214

DAILY Wed Sep 24, 2008  
 Re = 164.78 (163.78, 17.76, -3.78 GSE)



```

RAD2
Antenna Ey .....
Mode LIN(1) .....
SUM/SEP SUM .....
Toggle OFF .....

RAD1
Antenna Ex .....
Mode LIS(0.2) .....
SUM/SEP SUM .....
Toggle OFF .....

TNR
Antenna ExEy .....
Mode A-32 .....
Sweep ACE .....
  
```