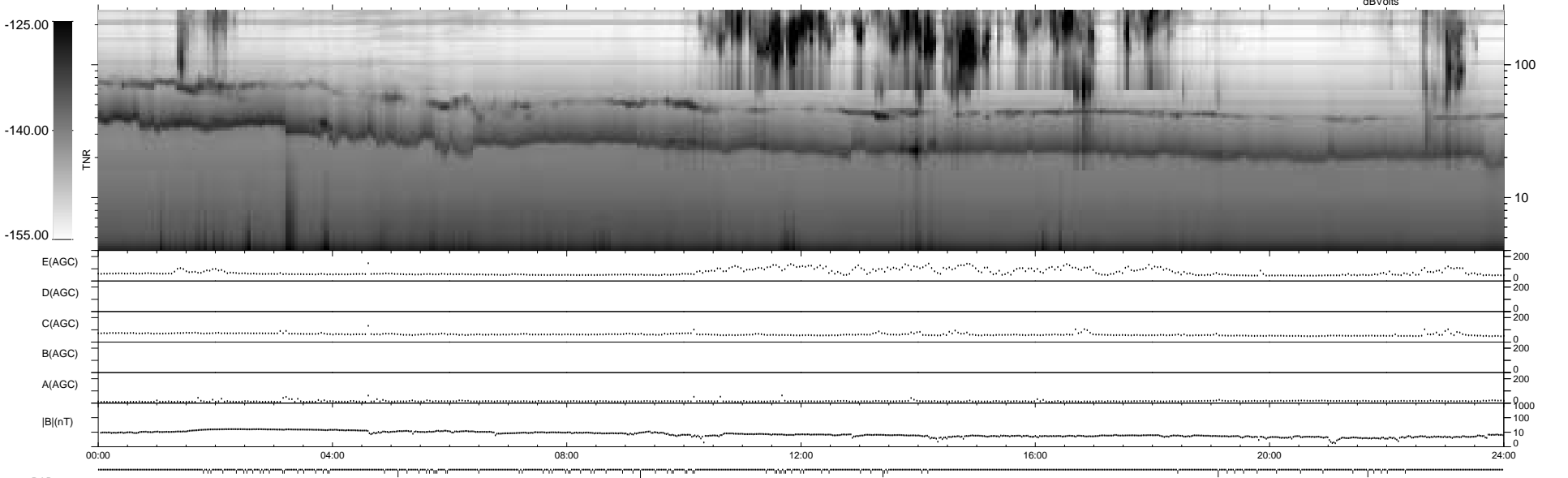
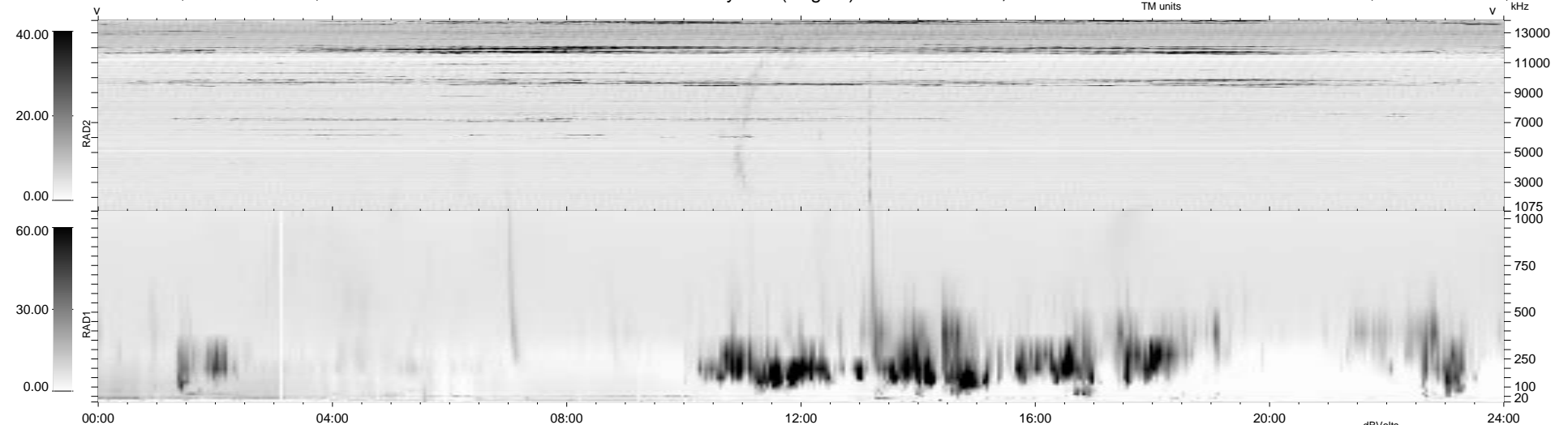


88 bad + 851 good MF/939MF projected (90%) - 0 missing MFs
 Avg interval = 180 secs
 Re = - 172.00 (171.11, 17.02, -3.73 GSE)

1.7d VMS-SunOS LZ version = v01
 DAILY Wed Sep 24, 2008
 Re = 168.50 (167.56, 17.34, -3.76 GSE)

WIND/WAVES Summary Plot (Page 1) for 31-JUL-1996, DOY = 213



```

RAD2
Antenna Ey .....
Mode LIN(1) .....
SUM/SEP SUM .....
Toggle OFF .....

RAD1
Antenna Ex .....
Mode LIS(0.2) .....
SUM/SEP SUM .....
Toggle OFF .....

TNR
Antenna ExEy .....
Mode A-32 .....
Sweep ACE .....
  
```