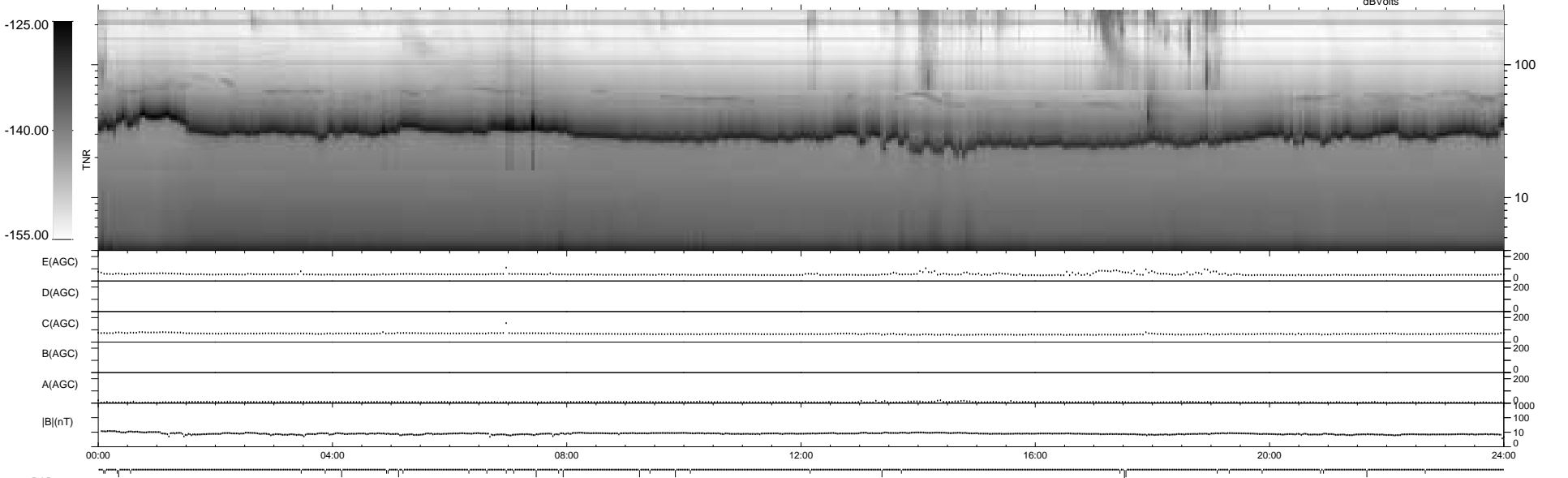
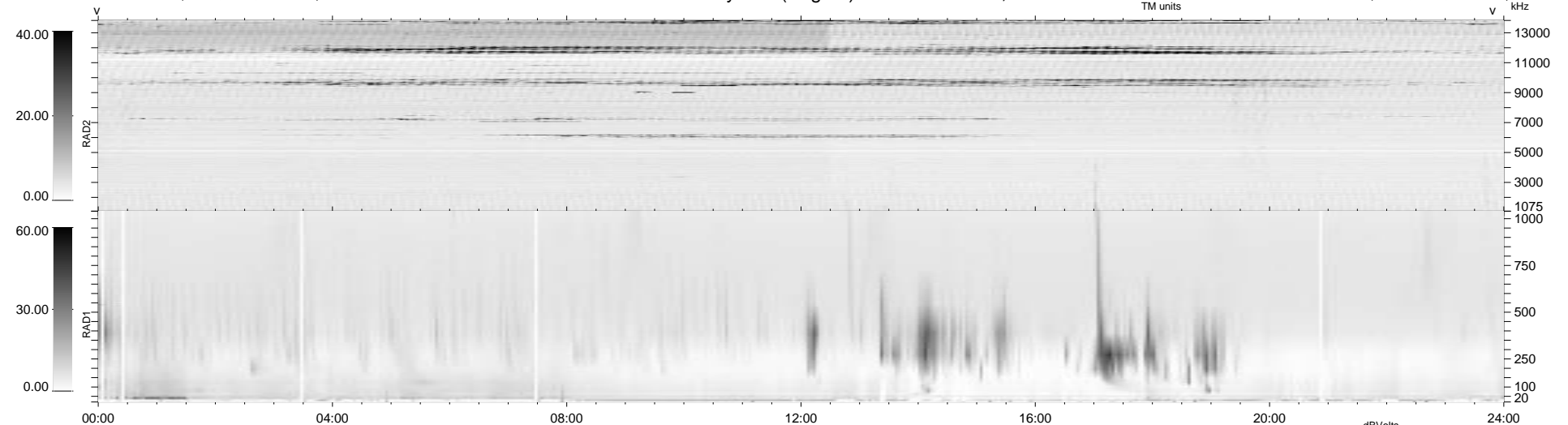


36 bad + 903 good MF/939MF projected (96%) - 0 missing MFs  
 Avg interval = 180 secs  
 Re = 209.42 (208.62, 17.10, -6.64 GSE)

1.7d VMS-SunOS LZ version = v01  
 DAILY Wed Sep 24, 2008  
 Re = 208.54 (207.76, 16.96, -6.14 GSE)

WIND/WAVES Summary Plot (Page 1) for 13-JUL-1996, DOY = 195



RAD2  
 Antenna Ey .....  
 Mode LIN(1) .....  
 SUM/SEP SUM .....  
 Toggle OFF .....  
 RAD1  
 Antenna Ex .....  
 Mode LIS(0.2) .....  
 SUM/SEP SUM .....  
 Toggle OFF .....  
 TNR  
 Antenna ExEy .....  
 Mode A-32 .....  
 Sweep ACE .....