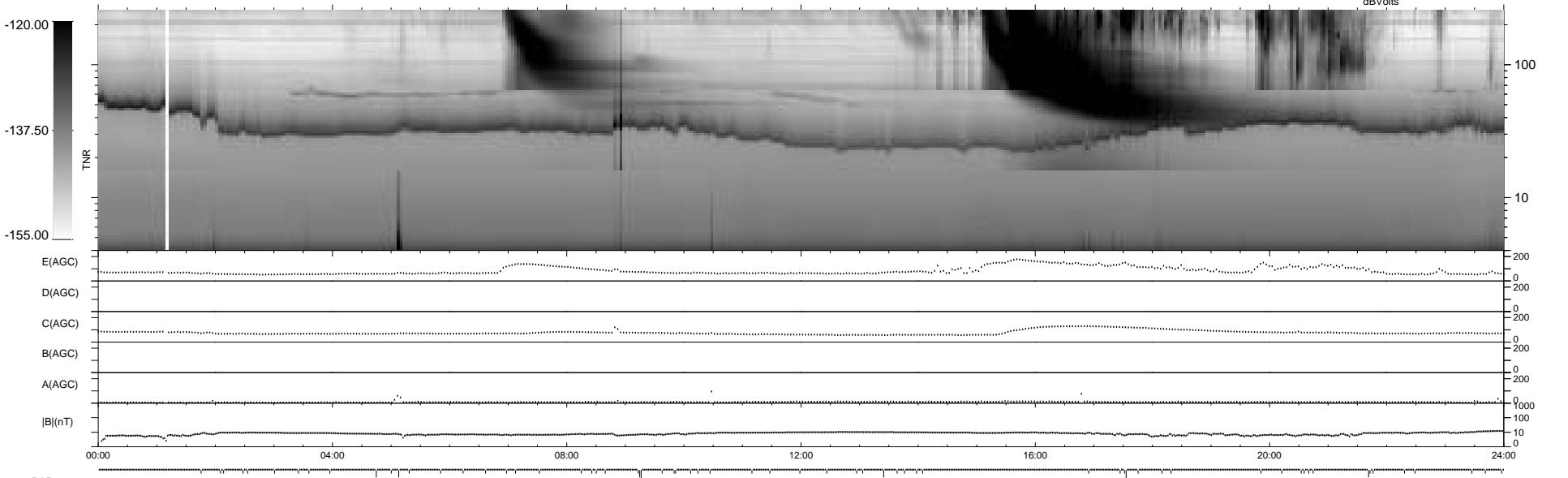
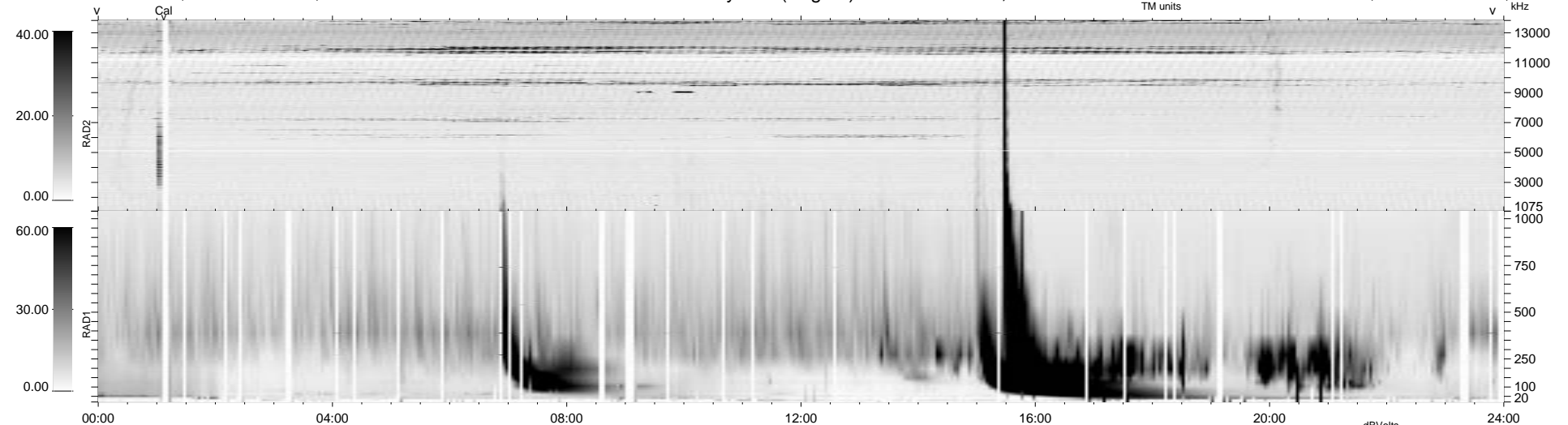


64 bad + 875 good MF/939MF projected (93%) - 0 missing MFs
 Avg interval = 180 secs
 Re = 210.18 (209.35, 17.26, -7.13 GSE)

1.7d VMS-SunOS LZ version = v01
 DAILY Wed Sep 24, 2008
 Re = 209.43 (208.62, 17.10, -6.65 GSE)

WIND/WAVES Summary Plot (Page 1) for 12-JUL-1996, DOY = 194



```

RAD2
Antenna Ey .....
Mode LIN(1) .....
SUM/SEP SUM .....
Toggle OFF .....

RAD1
Antenna Ex .....
Mode LIS(0.2) .....
SUM/SEP SUM .....
Toggle OFF .....

TNR
Antenna ExEy .....
Mode A-32 .....
Sweep ACE .....
  
```