

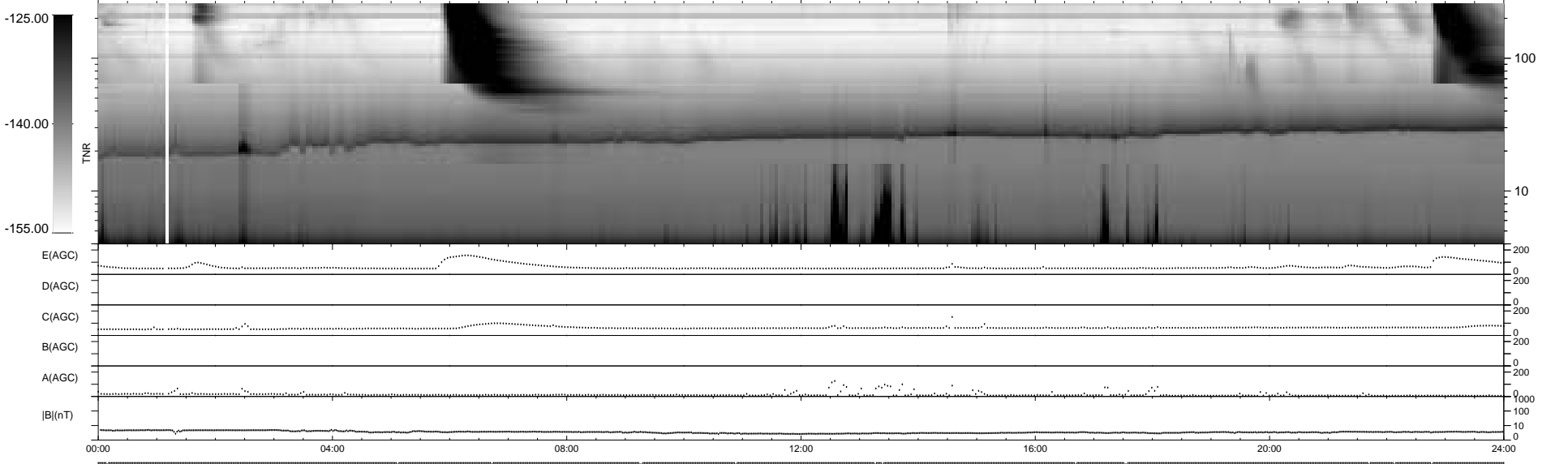
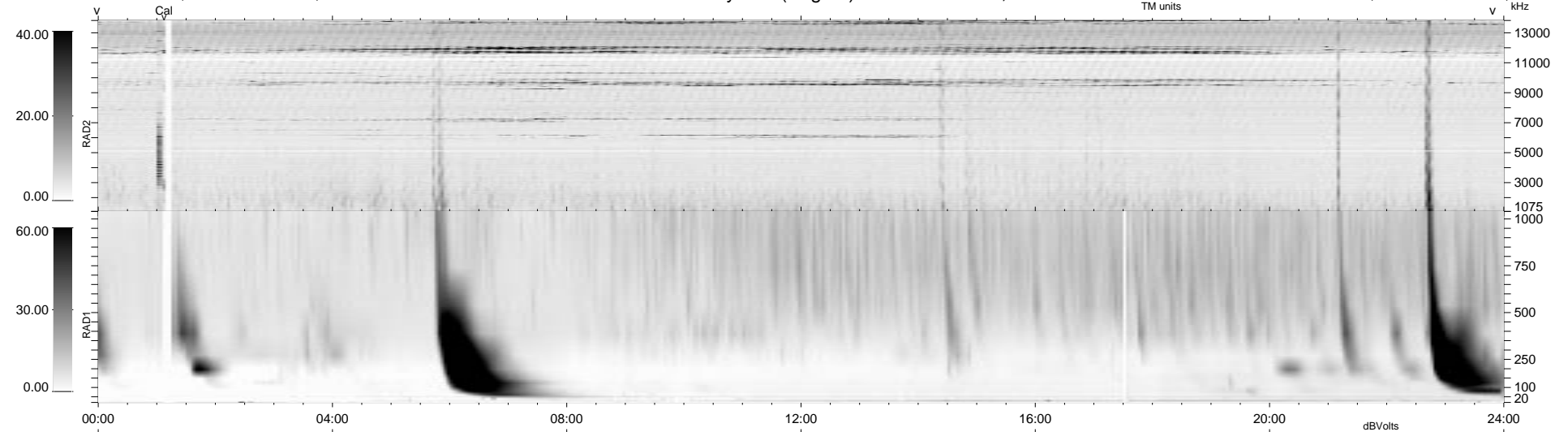
14 bad + 926 good MF/940MF projected (98%) - 0 missing MFs
 Avg interval = 180 secs
 Re = - 211.37 (210.48, 17.64, -8.07 GSE)

1.7d VMS-SunOS

LZ version = v01

WIND/WAVES Summary Plot (Page 1) for 10-JUL-1996, DOY = 192

DAILY Wed Sep 24, 2008
 Re = 210.84 (209.98, 17.44, -7.61 GSE)



```

RAD2
Antenna Ey .....
Mode LIN(1) .....
SUM/SEP SUM .....
Toggle OFF .....

RAD1
Antenna Ex .....
Mode LIS(0.2) .....
SUM/SEP SUM .....
Toggle OFF .....

TNR
Antenna ExEy .....
Mode A-32 .....
Sweep ACE .....
  
```