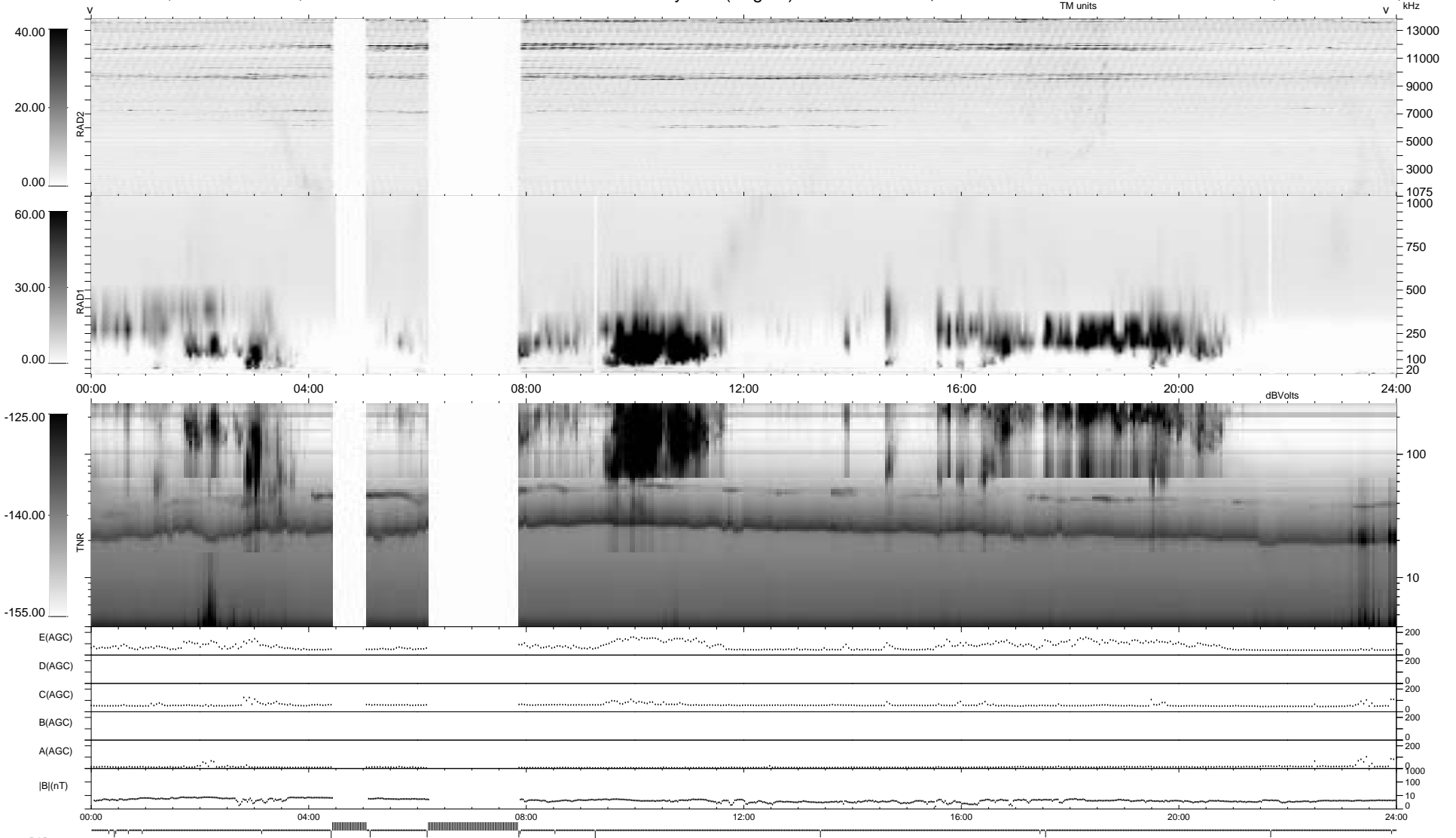


18 bad + 831 good MF/939MF projected (88%) - 90 missing MFs
 Avg interval = 180 secs
 Re = - 212.72 (211.62, 19.02, -10.18 GSE)

1.7d VMS-SunOS LZ version = v01
 DAILY Wed Sep 24, 2008
 Re = 212.60 (211.55, 18.71, -9.79 GSE)

WIND/WAVES Summary Plot (Page 1) for 05-JUL-1996, DOY = 187



```

RAD2
Antenna Ey .....
Mode LIN(1) .....
SUM/SEP SUM .....
Toggle OFF .....

RAD1
Antenna Ex .....
Mode LIS(0.2) .....
SUM/SEP SUM .....
Toggle OFF .....

TNR
Antenna ExEy .....
Mode A-32 .....
Sweep ACE .....
  
```