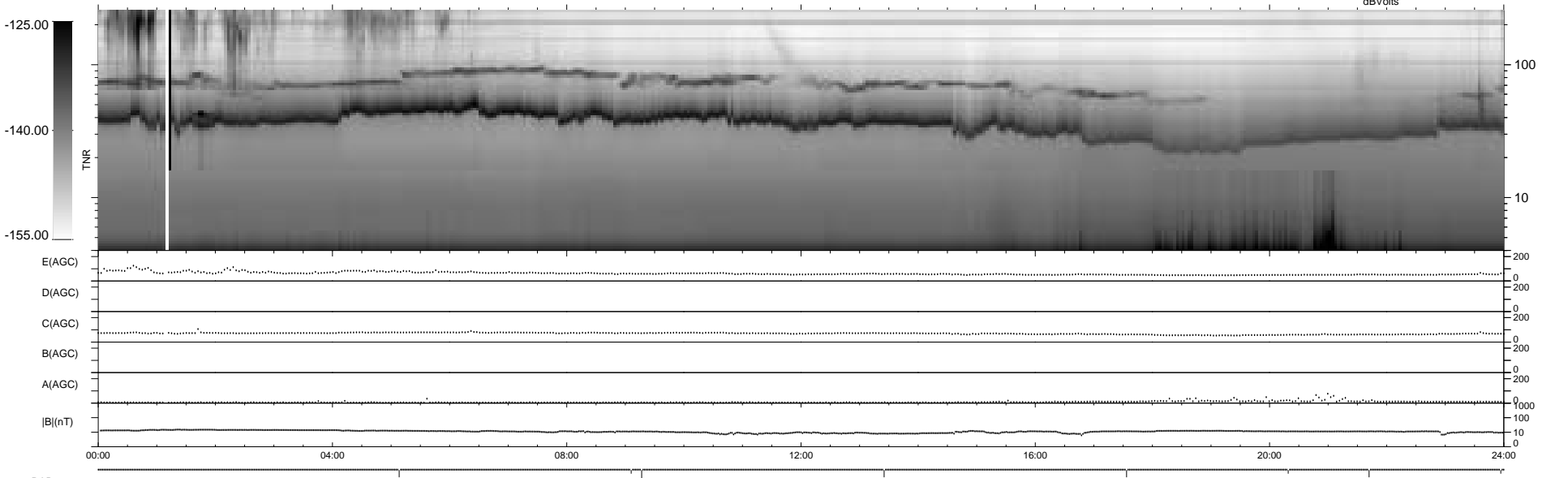
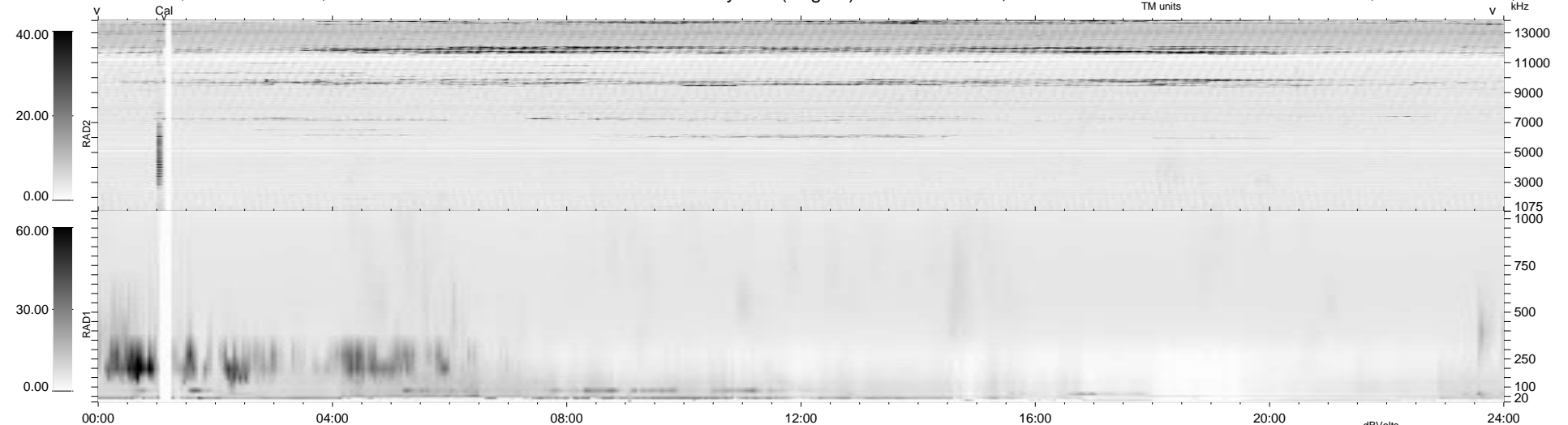


8 bad + 932 good MF/940MF projected (99%) - 0 missing MFs
 Avg interval = 180 secs
 Re = - 212.74 (211.50, 20.02, -11.28 GSE)

1.7d VMS-SunOS LZ version = v01

WIND/WAVES Summary Plot (Page 1) for 02-JUL-1996, DOY = 184

DAILY Wed Sep 24, 2008
 Re = 212.78 (211.59, 19.69, -10.93 GSE)



RAD2
 Antenna Ey
 Mode LIN(1)
 SUM/SEP SUM
 Toggle OFF
 RAD1
 Antenna Ex
 Mode LIS(0.2)
 SUM/SEP SUM
 Toggle OFF
 TNR
 Antenna ExEy
 Mode A-32
 Sweep ACE