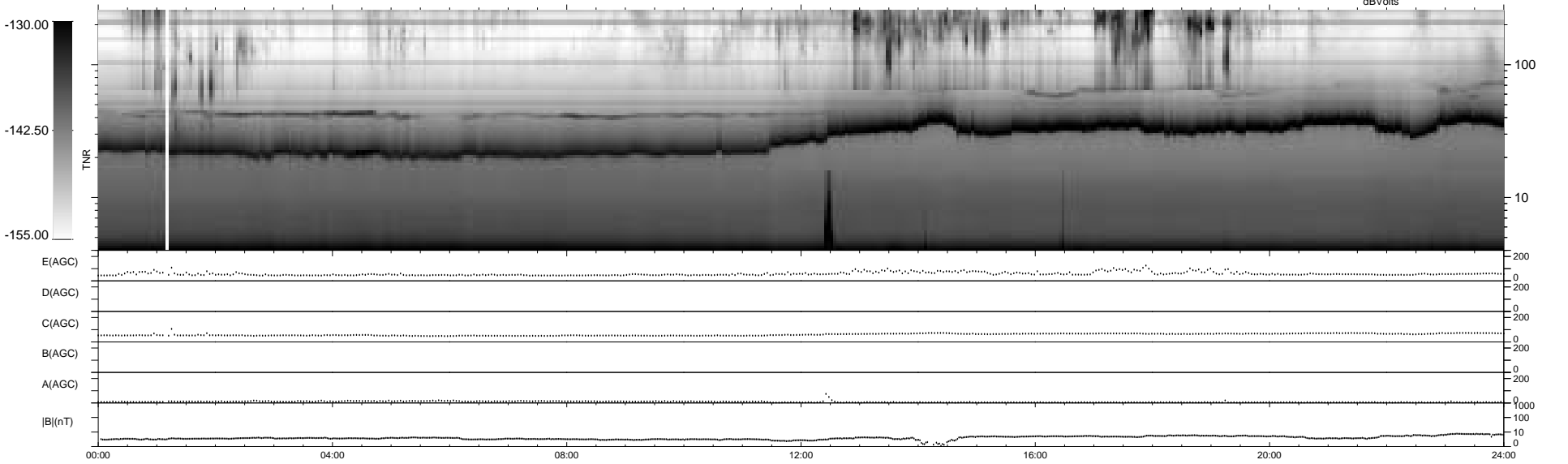
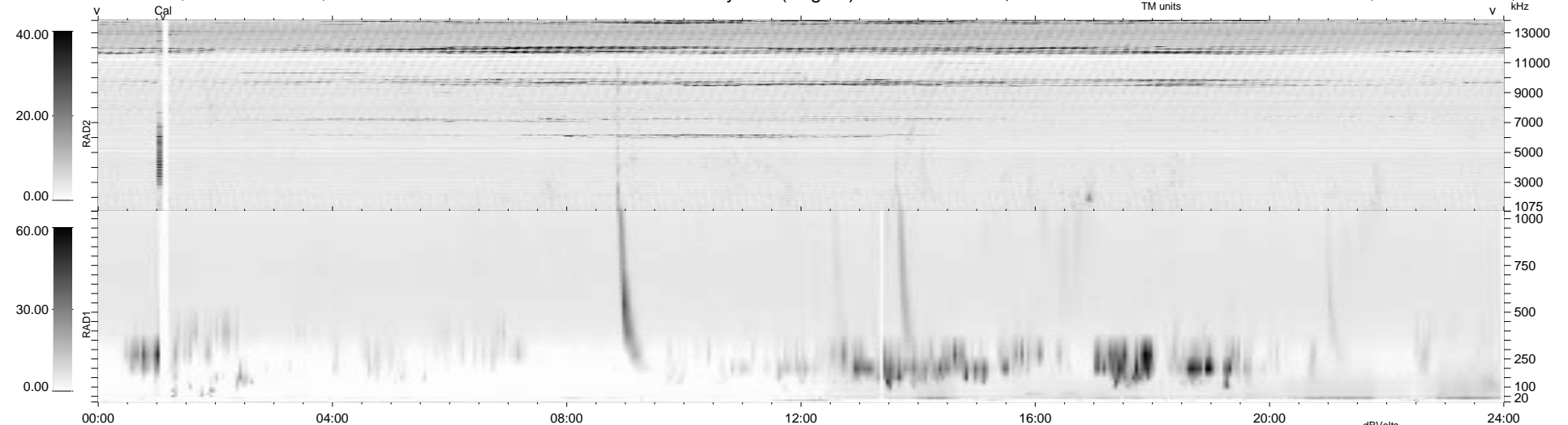


10 bad + 929 good MF/939MF projected (98%) - 0 missing MFs
 Avg interval = 180 secs
 Re = 209.33 (207.84, 20.60, -13.97 GSE)

1.7d VMS-SunOS LZ version = v01
 DAILY Wed Sep 24, 2008
 Re = 210.00 (208.51, 20.86, -13.79 GSE)

WIND/WAVES Summary Plot (Page 1) for 22-JUN-1996, DOY = 174



RAD2
 Antenna Ey
 Mode LIN(1)
 SUM/SEP SUM
 Toggle OFF

RAD1
 Antenna Ex
 Mode LIS(0.2)
 SUM/SEP SUM
 Toggle OFF

TNR
 Antenna ExEy
 Mode A-32
 Sweep ACE