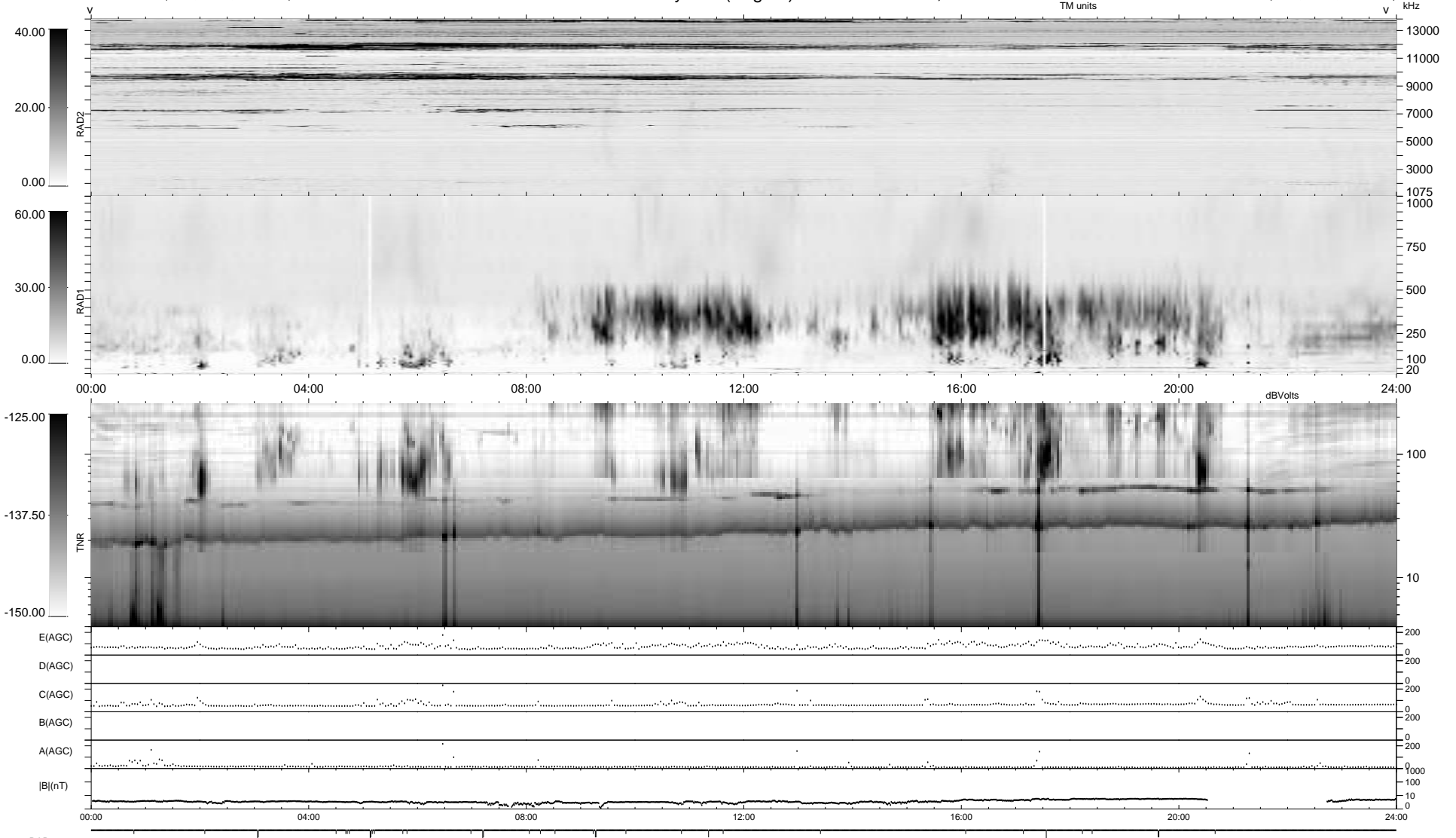


36 bad + 1842 good MF/1878MF projected (98%) - 0 missing MFs
 Avg interval = 180 secs
 Re = - 80.68 (67.88, -43.60, -0.79 GSE)

1.7d VMS-SunOS LZ version = v01

WIND/WAVES Summary Plot (Page 1) for 16-MAY-1996, DOY = 137

DAILY Wed Sep 24, 2008
 Re = 89.08 (78.95, -41.21, -1.74 GSE)



```

RAD2
Antenna Ey .....
Mode LIN(1) .....
SUM/SEP SUM .....
Toggle OFF .....

RAD1
Antenna Ex .....
Mode LIS(2,4) .....
SUM/SEP SUM .....
Toggle OFF .....

TNR
Antenna ExEy .....
Mode A-32 .....
Sweep ACE .....
  
```