

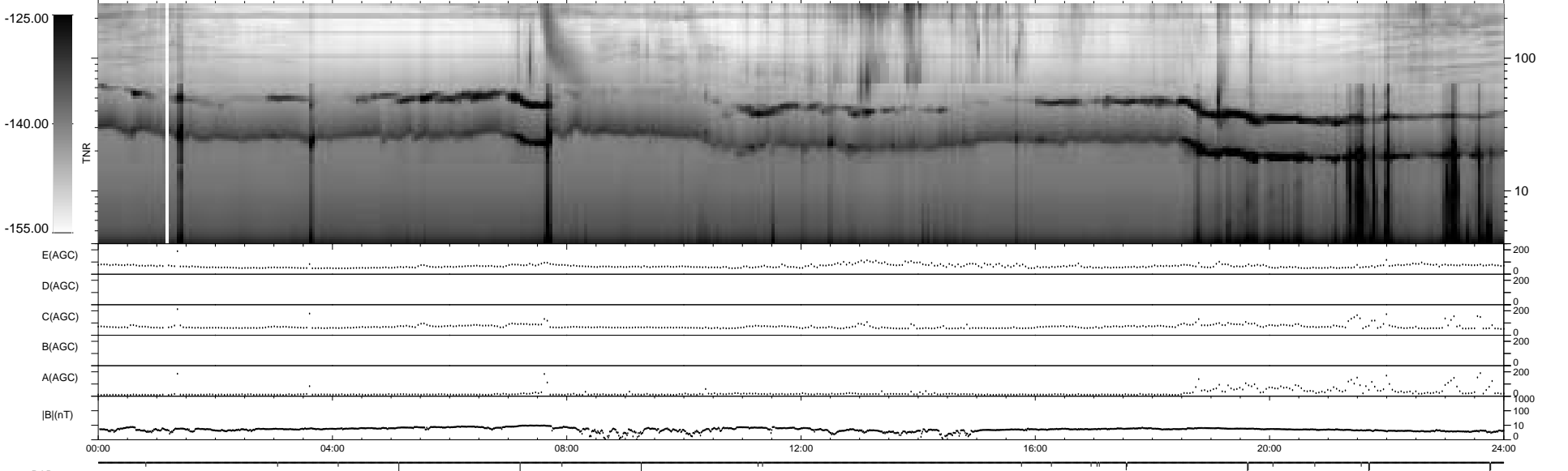
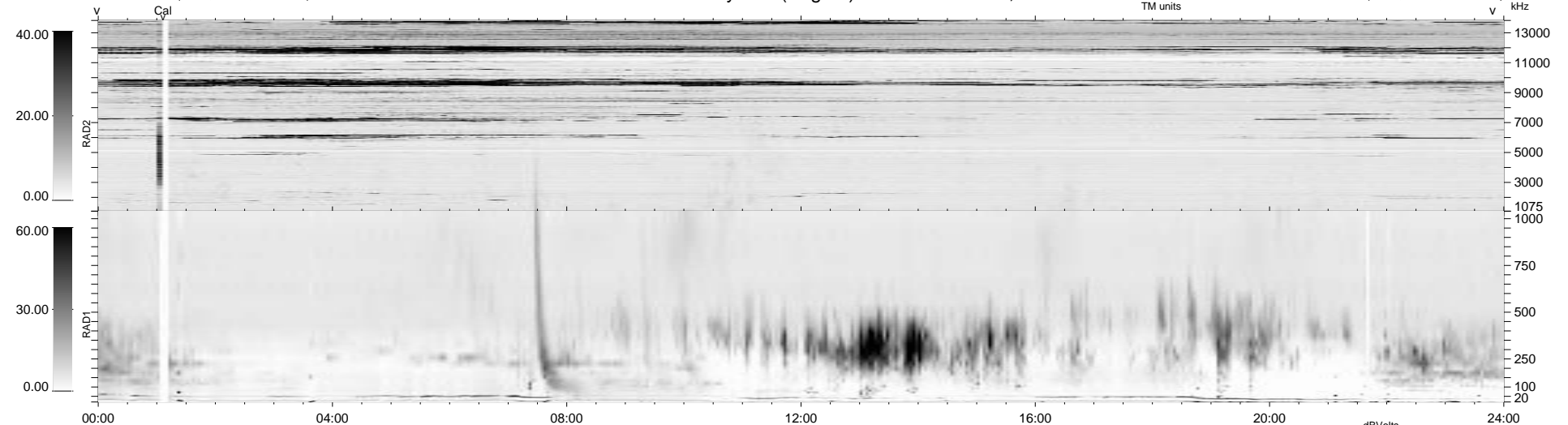
25 bad + 1853 good MF/1878MF projected (98%) - 0 missing MFs
 Avg interval = 180 secs
 Re = 71.43 (55.29, -45.23, 0.18 GSE)

1.7d VMS-SunOS

LZ version = v01

WIND/WAVES Summary Plot (Page 1) for 15-MAY-1996, DOY = 136

DAILY Wed Sep 24, 2008
 Re = 80.62 (67.80, -43.62, -0.78 GSE)



RAD2
 Antenna Ey
 Mode LIN(1)
 SUM/SEP SUM
 Toggle OFF
 RAD1
 Antenna Ex
 Mode LIS(2/4)
 SUM/SEP SUM
 Toggle OFF
 TNR
 Antenna ExEy
 Mode A-32
 Sweep ACE