

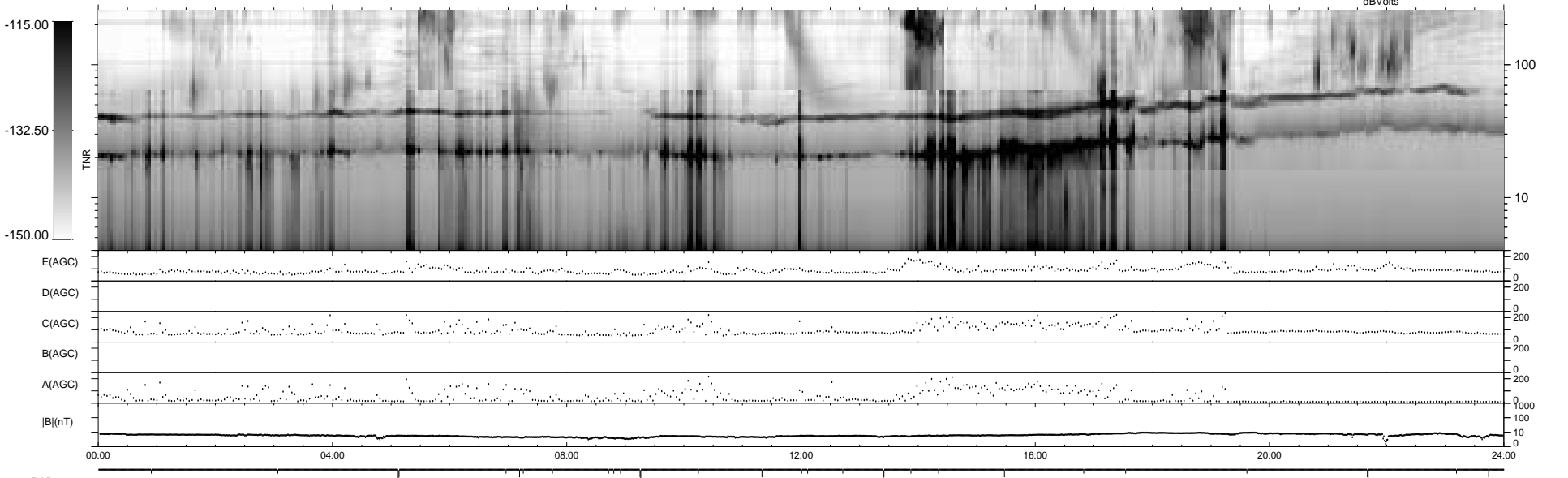
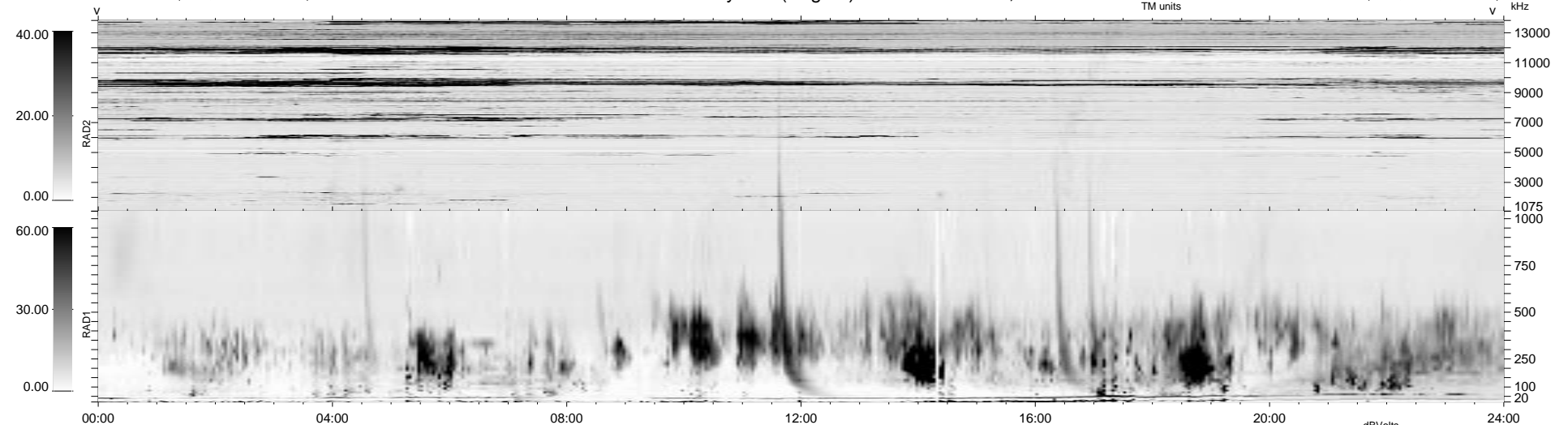
31 bad + 1847 good MF/1878MF projected (98%) - 0 missing MFs
 Avg interval = 180 secs
 Re = - 60.96 (40.98, -45.11, 1.09 GSE)

1.7d VMS-SunOS

LZ version = v01

WIND/WAVES Summary Plot (Page 1) for 14-MAY-1996, DOY = 135

DAILY Wed Sep 24, 2008
 Re = 71.37 (55.20, -45.23, 0.19 GSE)



RAD2
 Antenna Ey
 Mode LIN(1)
 SUM/SEP SUM
 Toggle OFF
 RAD1
 Antenna Ex
 Mode LIS(2/4)
 SUM/SEP SUM
 Toggle OFF
 TNR
 Antenna ExEy
 Mode A-32
 Sweep ACE