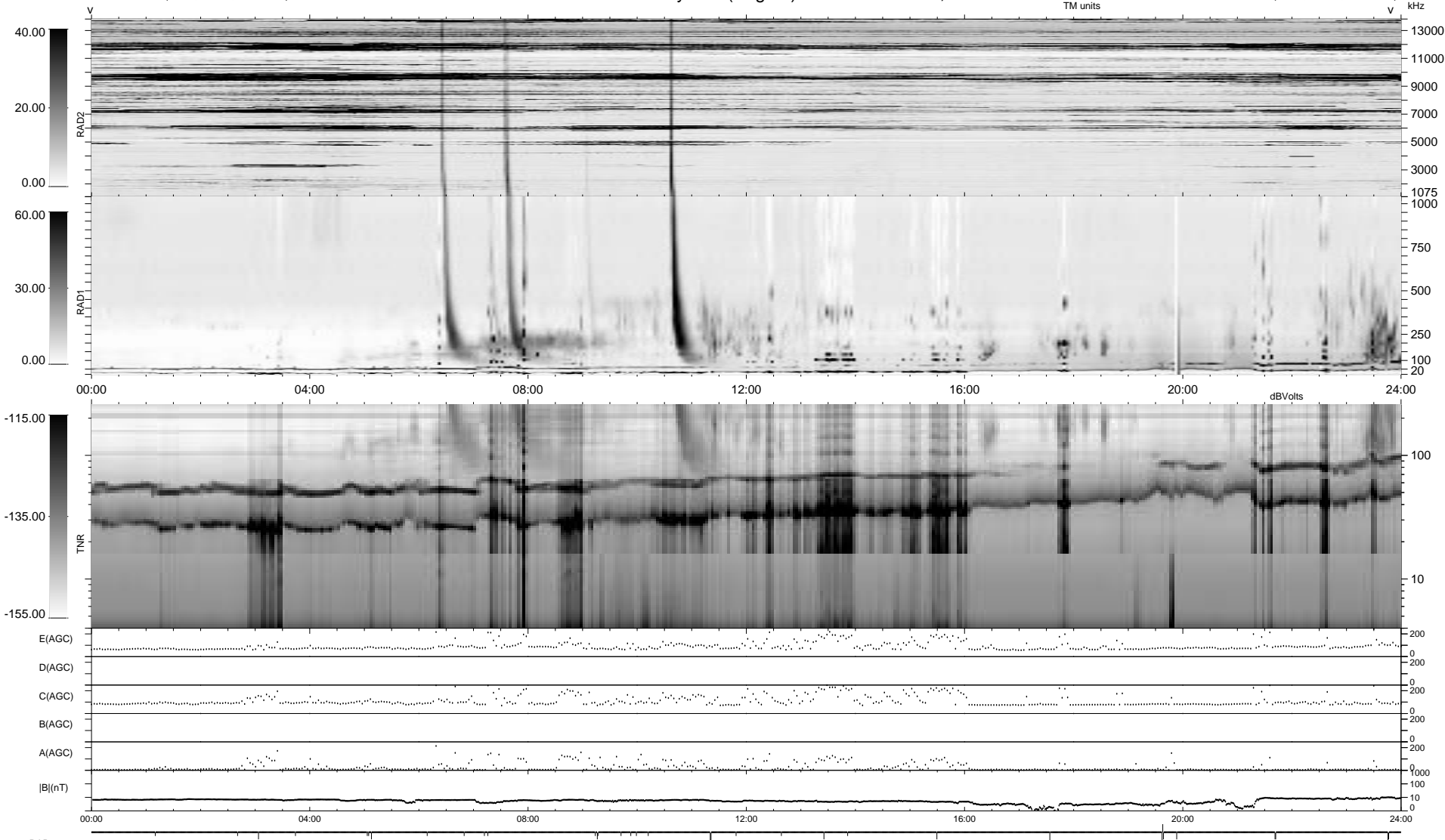


33 bad + 1844 good MF/1878MF projected (98%) - 1 missing MF
 Avg interval = 180 secs
 Re = 36.49 (10.62, -34.85, 2.10 GSE)

1.7d VMS-SunOS LZ version = v01

WIND/WAVES Summary Plot (Page 1) for 12-MAY-1996, DOY = 133

DAILY Wed Sep 24, 2008
 Re = 49.23 (26.31, -41.57, 1.72 GSE)



RAD2 Antenna Ey
 Mode LIN(1)
 SUM/SEP SUM
 Toggle OFF
 RAD1 Antenna Ex
 Mode LIS(2/4)
 SUM/SEP SUM
 Toggle OFF
 TNR Antenna ExEy
 Mode A-32
 Sweep ACE