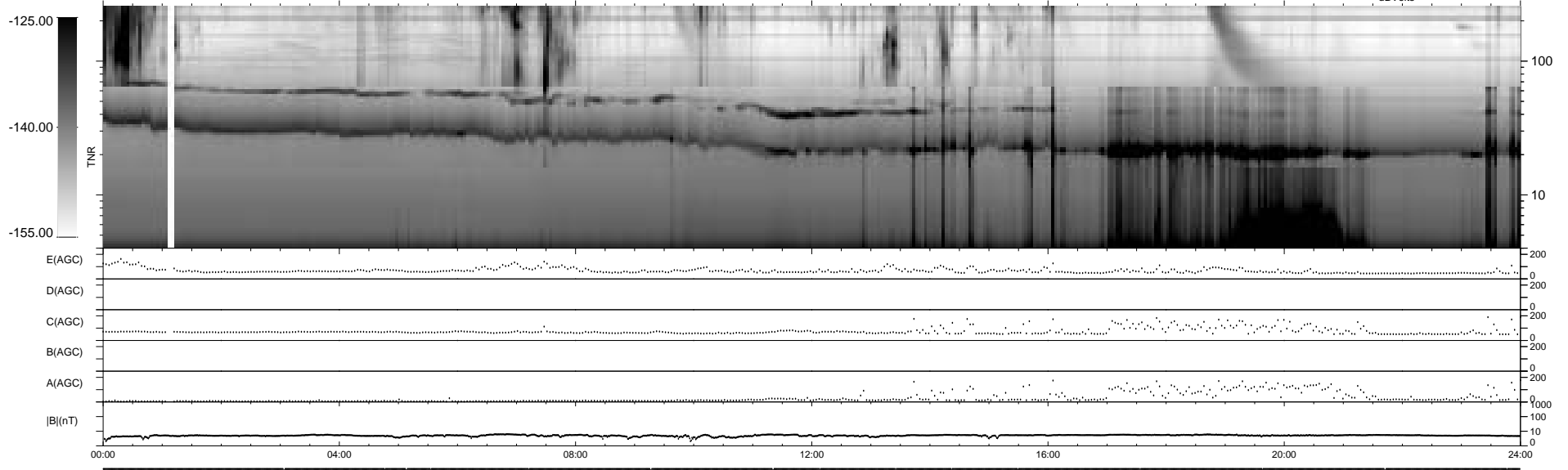
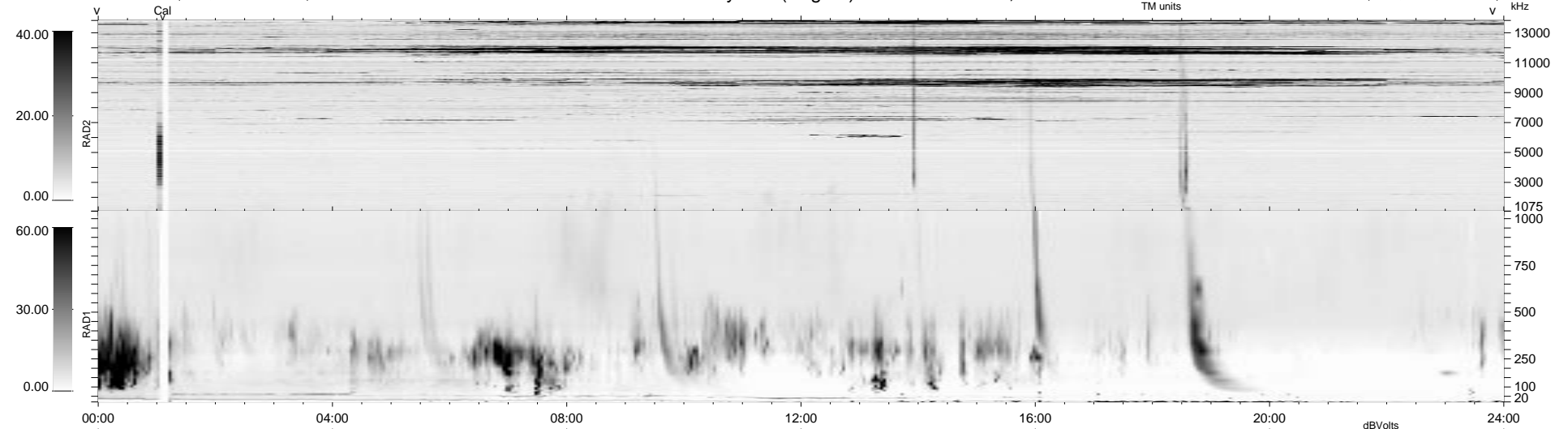


20 bad + 1858 good MF/1878MF projected (98%) - 0 missing MFs  
 Avg interval = 180 secs  
 Re = 71.03 (68.09, 19.70, -4.56 GSE)

1.7d VMS-SunOS LZ version = v01  
 DAILY Wed Sep 24, 2008  
 Re = 64.00 (59.34, 23.55, -4.56 GSE)

### WIND/WAVES Summary Plot (Page 1) for 05-MAY-1996, DOY = 126



```

RAD2
Antenna Ey .....
Mode LIN(1) .....
SUM/SEP SUM .....
Toggle OFF .....

RAD1
Antenna Ex .....
Mode LIS(2/4) .....
SUM/SEP SUM .....
Toggle OFF .....

TNR
Antenna ExEy .....
Mode A-32 .....
Sweep ACE .....
  
```