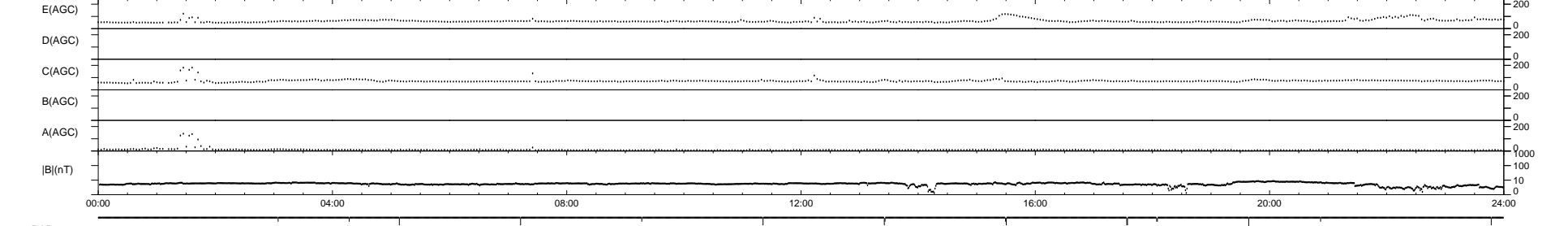
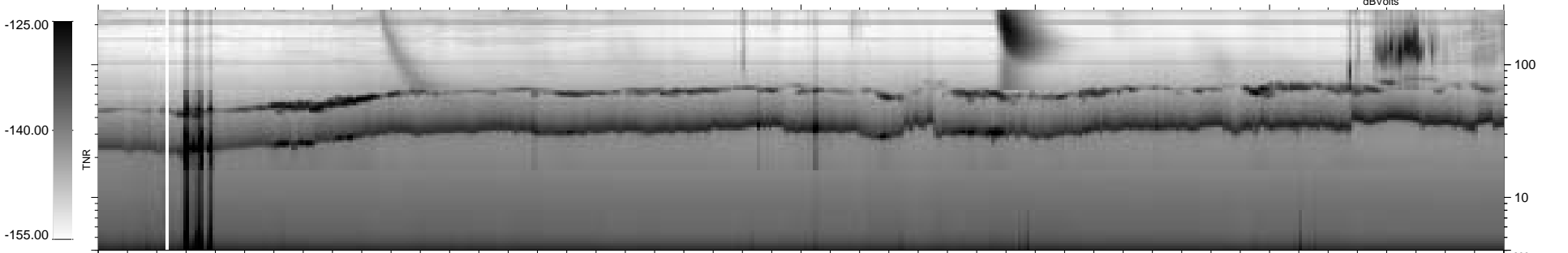
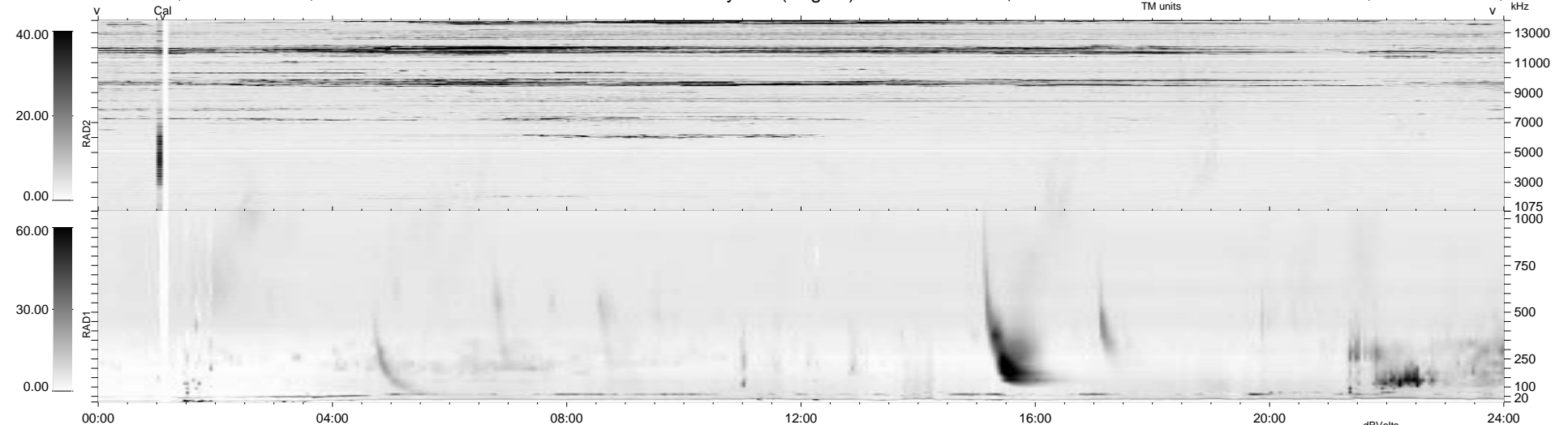


17 bad + 1861 good MF/1878MF projected (99%) - 0 missing MFs
 Avg interval = 180 secs
 Re = 84.43 (82.90, -15.97, -1.12 GSE)

1.7d VMS-SunOS LZ version = v01

WIND/WAVES Summary Plot (Page 1) for 27-APR-1996, DOY = 118

DAILY Wed Sep 24, 2008
 Re = 86.43 (85.62, -11.65, -1.73 GSE)



RAD2
 Antenna Ey
 Mode LIN(1)
 SUM/SEP SUM
 Toggle OFF
 RAD1
 Antenna Ex
 Mode LIS(2/4)
 SUM/SEP SUM
 Toggle OFF
 TNR
 Antenna ExEy
 Mode A-32
 Sweep ACE