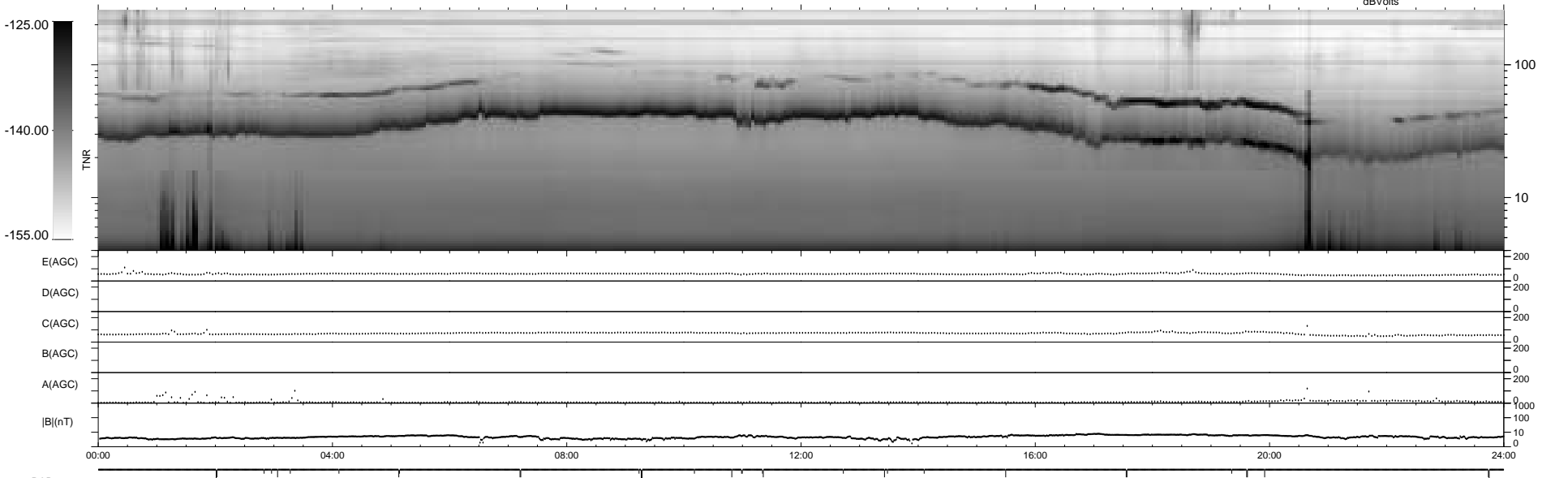
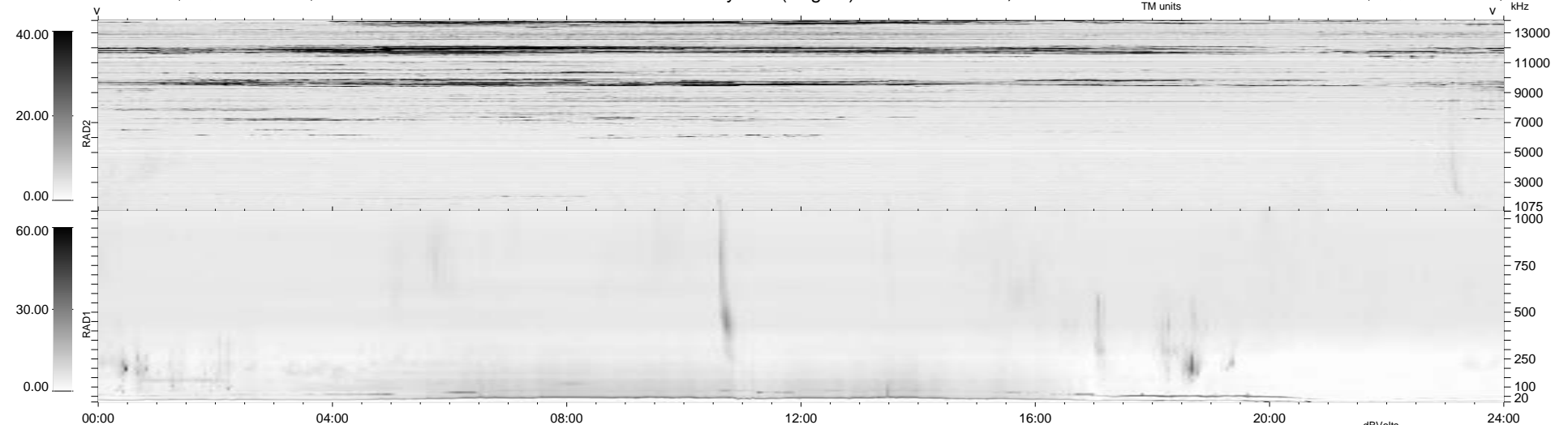


33 bad + 1845 good MF/1878MF projected (98%) - 0 missing MFs  
 Avg interval = 180 secs  
 Re = - 81.33 (78.79, -20.15, -0.48 GSE)

1.7d VMS-SunOS LZ version = v01  
 DAILY Wed Sep 24, 2008  
 Re = 84.41 (82.87, -16.00, -1.12 GSE)

### WIND/WAVES Summary Plot (Page 1) for 26-APR-1996, DOY = 117



```

RAD2
Antenna Ey .....
Mode LIN(1) .....
SUM/SEP SUM .....
Toggle OFF .....

RAD1
Antenna Ex .....
Mode LIS(2/4) .....
SUM/SEP SUM .....
Toggle OFF .....

TNR
Antenna ExEy .....
Mode A-32 .....
Sweep ACE .....
  
```