

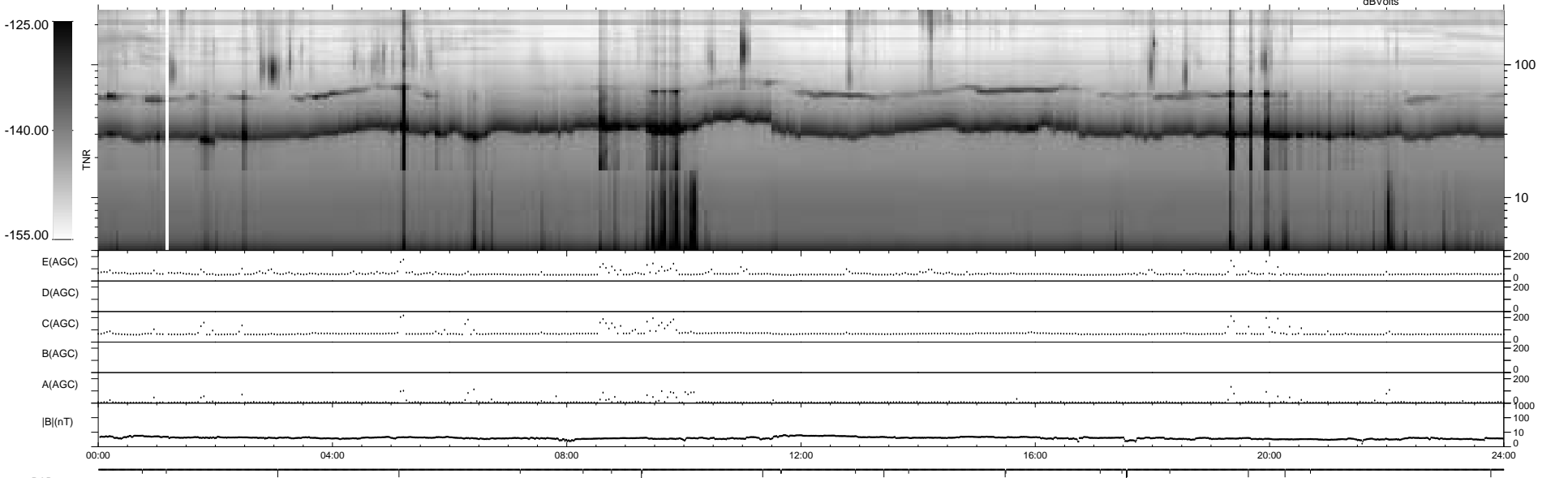
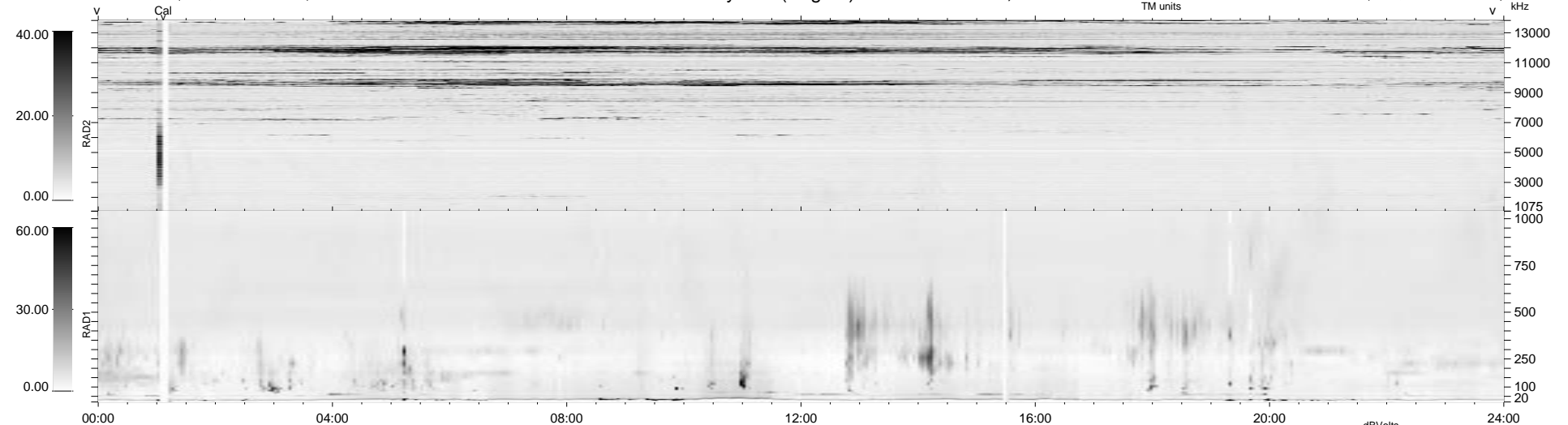
26 bad + 1852 good MF/1878MF projected (98%) - 0 missing MFs
 Avg interval = 180 secs
 Re = 77.07 (73.21, -24.09, 0.18 GSE)

1.7d VMS-SunOS

LZ version = v01

WIND/WAVES Summary Plot (Page 1) for 25-APR-1996, DOY = 116

DAILY Wed Sep 24, 2008
 Re = 81.31 (78.76, -20.18, -0.47 GSE)



```

RAD2
Antenna Ey .....
Mode LIN(1) .....
SUM/SEP SUM .....
Toggle OFF .....

RAD1
Antenna Ex .....
Mode LIS(2/4) .....
SUM/SEP SUM .....
Toggle OFF .....

TNR
Antenna ExEy .....
Mode A-32 .....
Sweep ACE .....
  
```