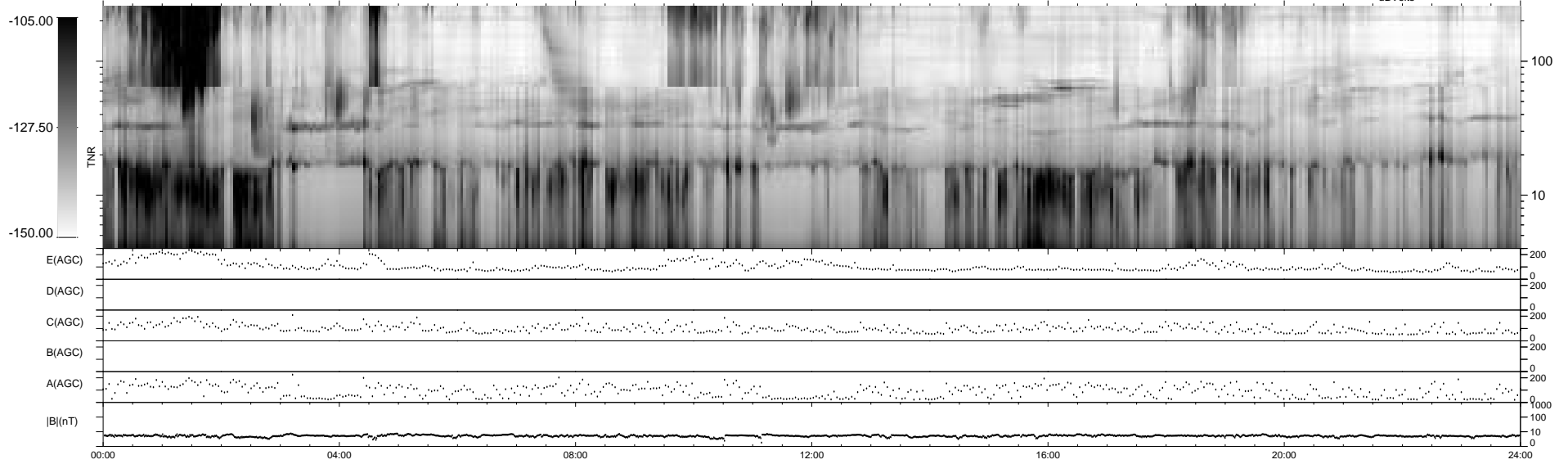
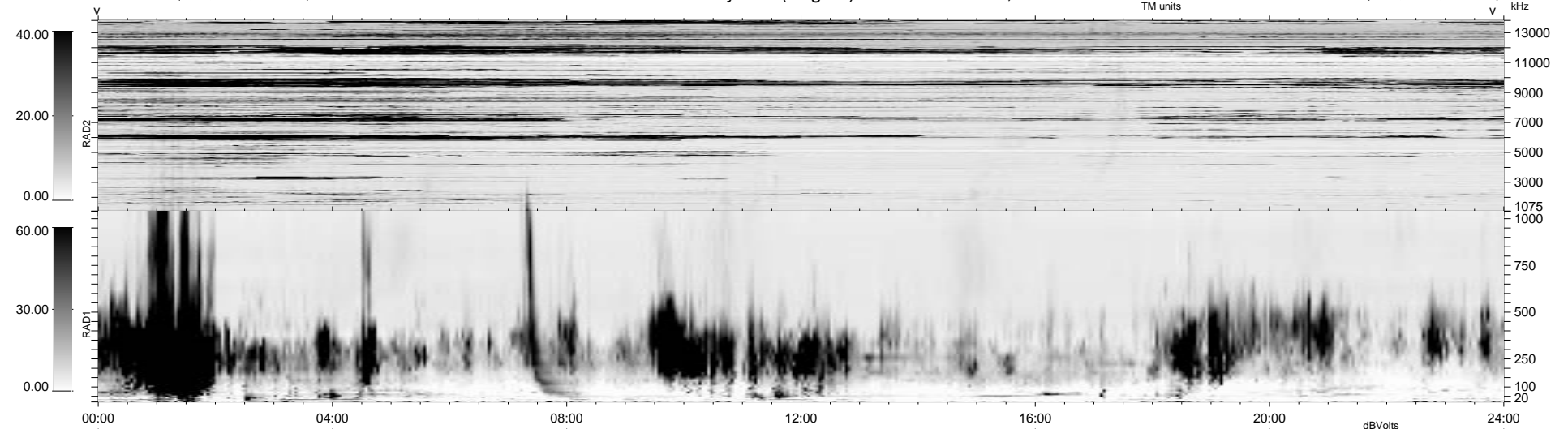


15 bad + 1864 good MF/1879MF projected (99%) - 0 missing MFs  
 Avg interval = 180 secs  
 Re = 31.90 (12.50, -29.23, 2.53 GSE)

1.7d VMS-SunOS LZ version = v01  
 DAILY Wed Sep 24, 2008  
 Re = 45.06 (30.73, -32.86, 2.45 GSE)

### WIND/WAVES Summary Plot (Page 1) for 20-APR-1996, DOY = 111



```

RAD2
Antenna Ey .....
Mode LIN(1) .....
SUM/SEP SUM .....
Toggle OFF .....

RAD1
Antenna Ex .....
Mode LIS(2/4) .....
SUM/SEP SUM .....
Toggle OFF .....

TNR
Antenna ExEy .....
Mode A-32 .....
Sweep ACE .....
  
```