

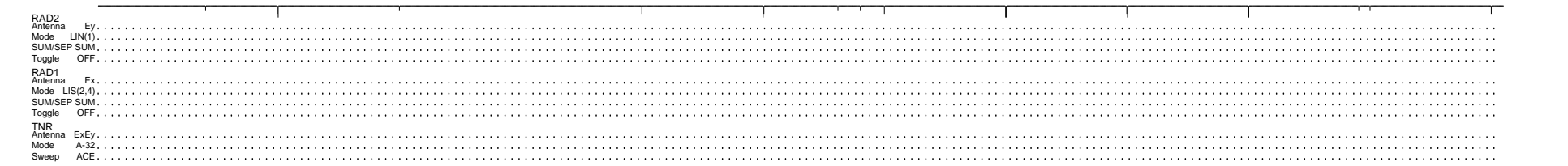
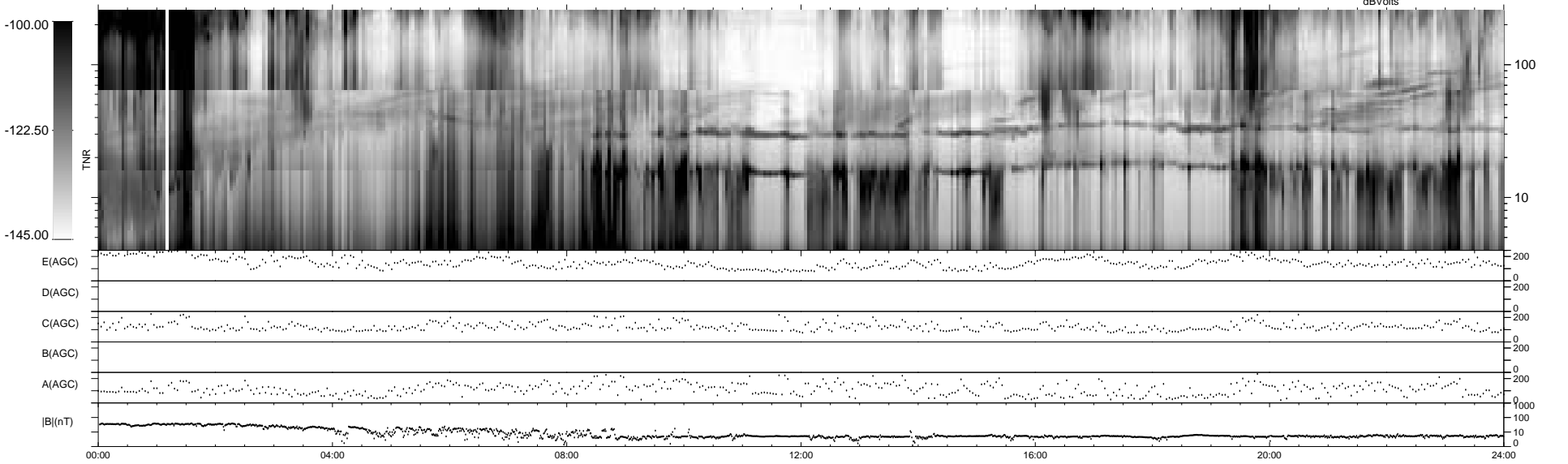
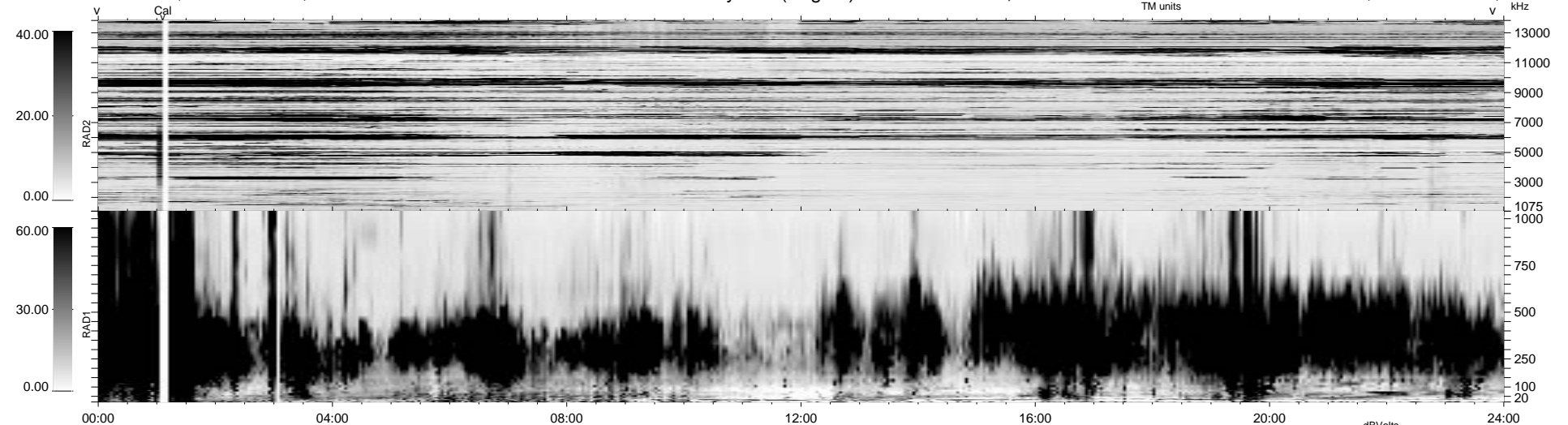
18 bad + 1860 good MF/1878MF projected (99%) - 0 missing MFs
 Avg interval = 180 secs
 Re = 17.17 (-9.26, -14.38, 1.55 GSE)

1.7d VMS-SunOS LZ version = v01

DAILY Wed Sep 24, 2008

Re = 31.79 (12.36, -29.18, 2.53 GSE)

WIND/WAVES Summary Plot (Page 1) for 19-APR-1996, DOY = 110



```

RAD2
Antenna Ey .....
Mode LIN(1) .....
SUM/SEP SUM .....
Toggle OFF .....

RAD1
Antenna Ex .....
Mode LIS(2,4) .....
SUM/SEP SUM .....
Toggle OFF .....

TNR
Antenna ExEy .....
Mode A-32 .....
Sweep ACE .....
  
```