

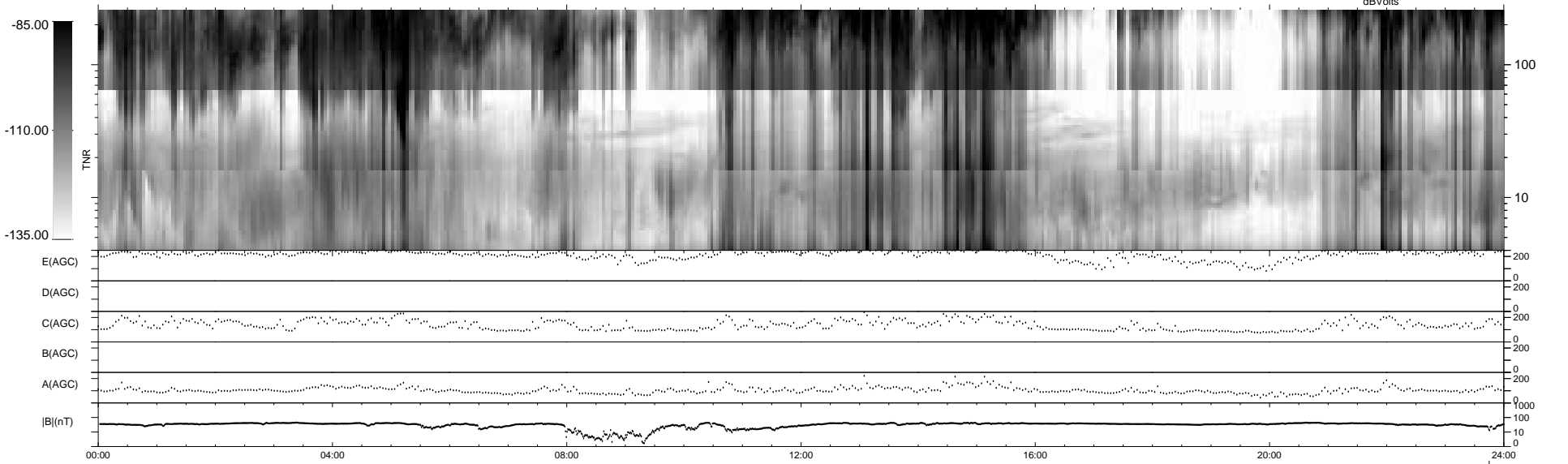
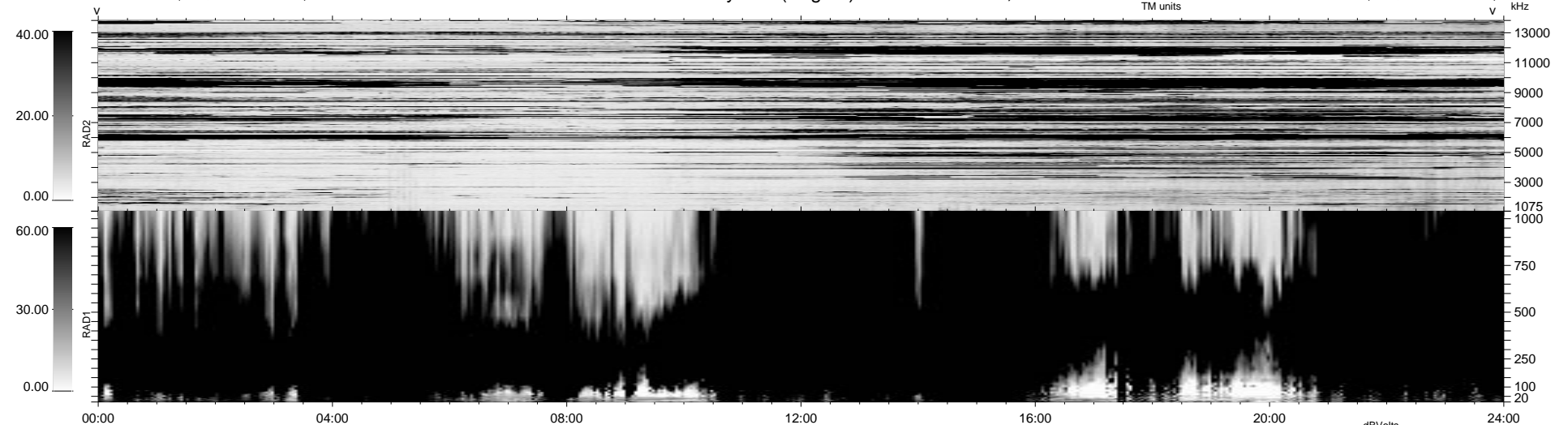
16 bad + 1861 good MF/1878MF projected (99%) - 1 missing MF
 Avg interval = 180 secs
 Re = 19.97 (-9.13, 17.70, -1.54 GSE)

1.7d VMS-SunOS LZ version = v01

DAILY Wed Sep 24, 2008

Re = 17.09 (-9.40, -14.19, 1.53 GSE)

WIND/WAVES Summary Plot (Page 1) for 18-APR-1996, DOY = 109



```

RAD2
Antenna Ey .....
Mode LIN(1) .....
SUM/SEP SUM .....
Toggle OFF .....

RAD1
Antenna Ex .....
Mode LIS(2/4) .....
SUM/SEP SUM .....
Toggle OFF .....

TNR
Antenna ExEy .....
Mode A-32 .....
Sweep ACE .....
  
```