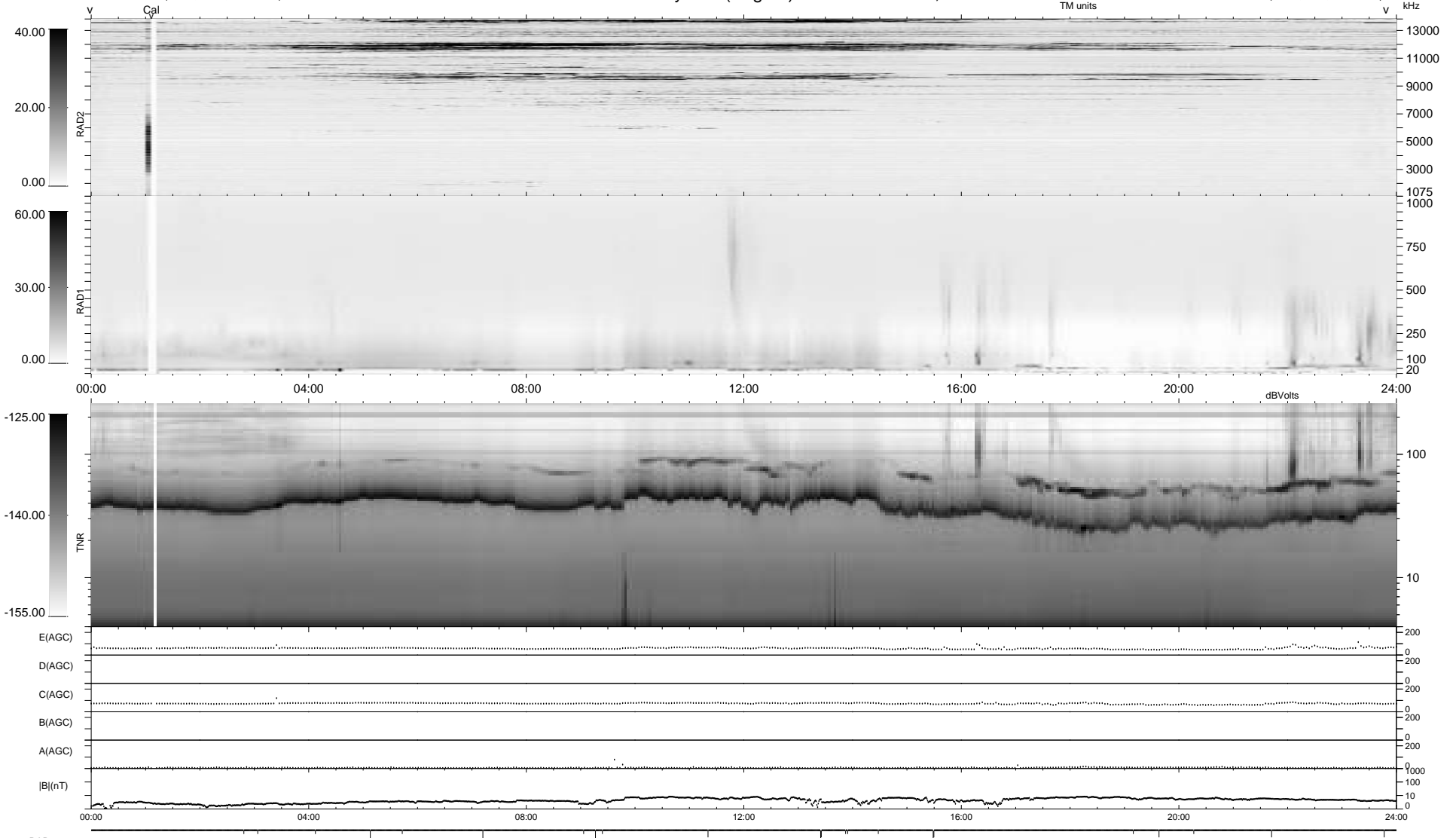


22 bad + 1856 good MF/1878MF projected (98%) - 0 missing MFs
 Avg interval = 180 secs
 Re = 74.42 (74.42, -0.78, 0.69 GSE)

1.7d VMS-SunOS LZ version = v01

WIND/WAVES Summary Plot (Page 1) for 03-APR-1996, DOY = 94

DAILY Wed Sep 24, 2008
 Re = 79.11 (78.96, 4.89, 0.04 GSE)



RAD2
 Antenna Ey
 Mode LIN(1)
 SUM/SEP SUM
 Toggle OFF

RAD1
 Antenna Ex
 Mode LIS(0.2)
 SUM/SEP SUM
 Toggle OFF

TNR
 Antenna ExEy
 Mode A-32
 Sweep ACE