

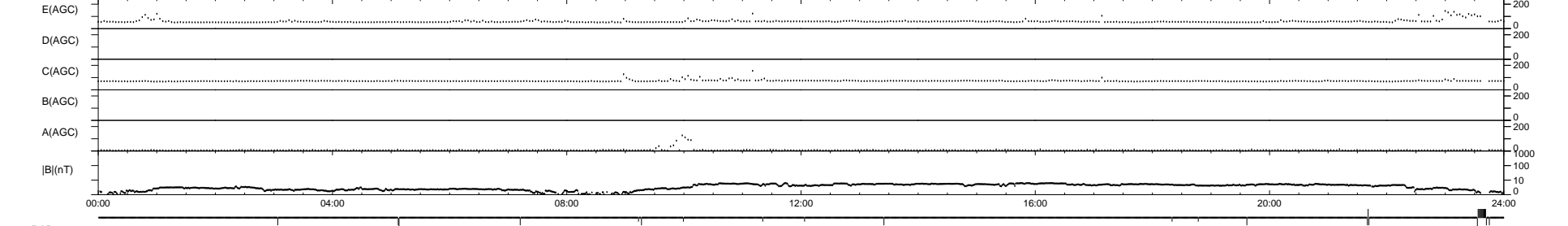
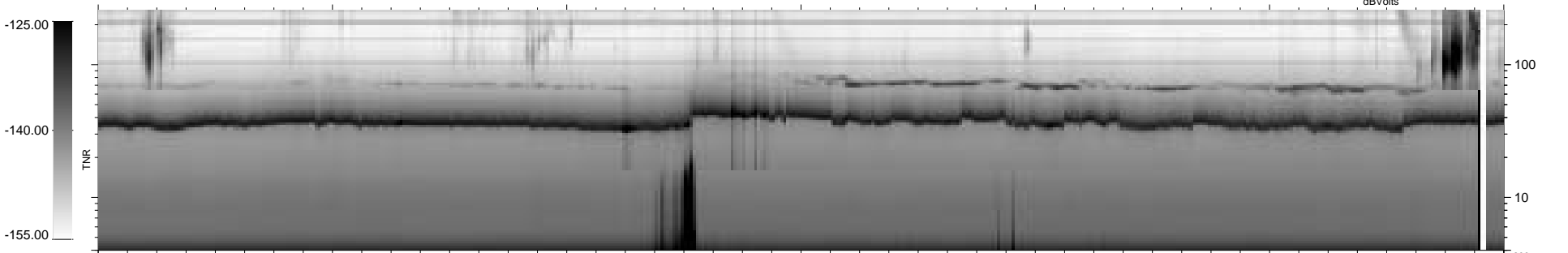
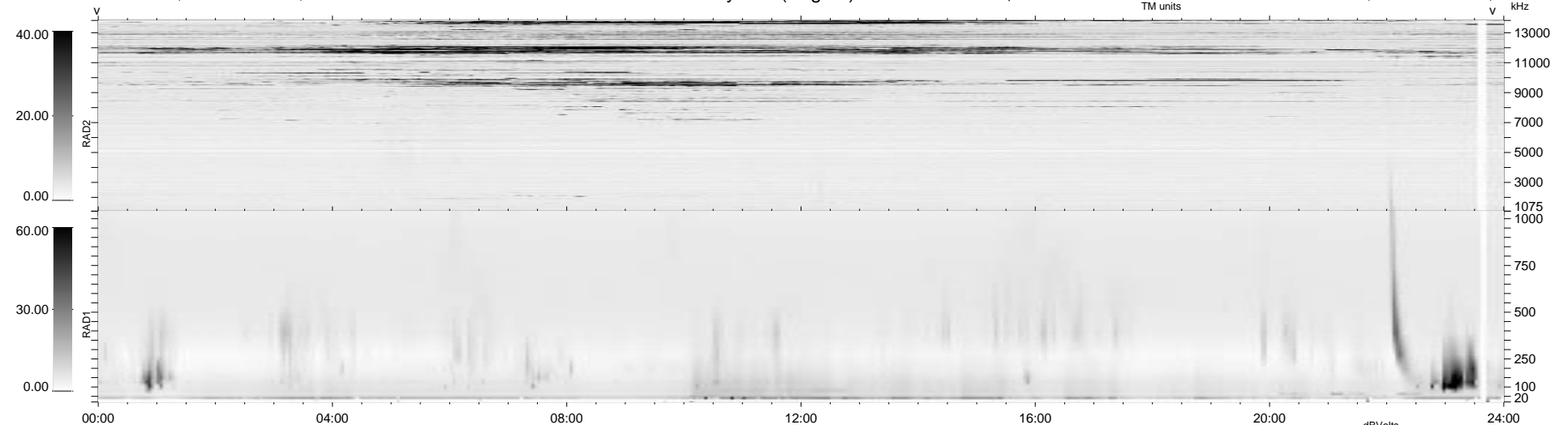
18 bad + 1848 good MF/1878MF projected (98%) - 12 missing MFs
 Avg interval = 180 secs
 Re = 68.40 (68.06, -6.65, 1.32 GSE)

1.7d VMS-SunOS

LZ version = v01

WIND/WAVES Summary Plot (Page 1) for 02-APR-1996, DOY = 93

DAILY Wed Sep 24, 2008
 Re = 74.39 (74.38, -0.82, 0.69 GSE)



```

RAD2
Antenna Ey .....
Mode LIN(1) .....
SUM/SEP SUM .....
Toggle OFF .....

RAD1
Antenna Ex .....
Mode LIS(0.2) .....
SUM/SEP SUM .....
Toggle OFF .....

TNR
Antenna ExEy .....
Mode A-32 .....
Sweep ACE .....
  
```