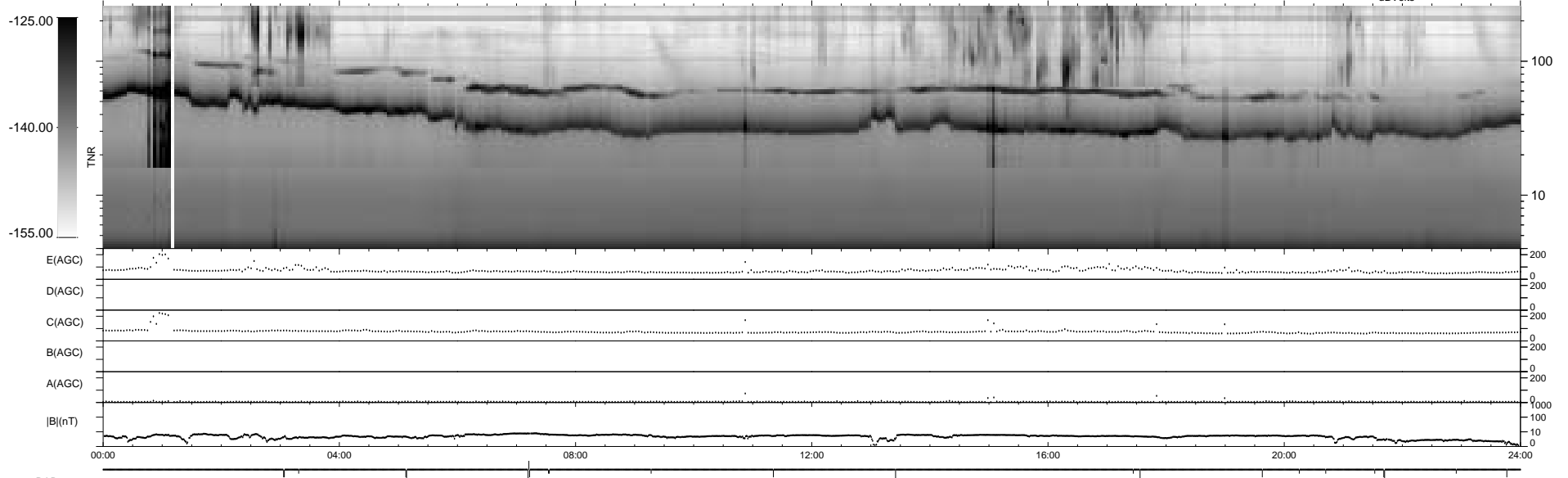
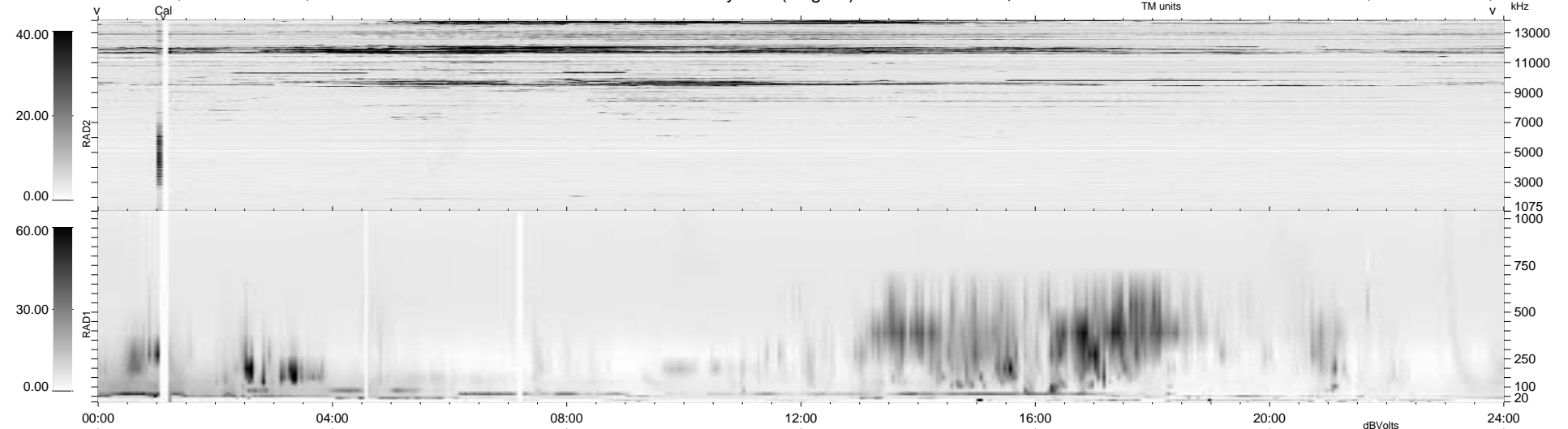


22 bad + 1856 good MF/1879MF projected (98%) - 1 missing MF
 Avg interval = 180 secs
 Re = 60.88 (59.54, -12.54, 1.90 GSE)

1.7d VMS-SunOS LZ version = v01
 DAILY Wed Sep 24, 2008
 Re = 68.35 (68.01, -6.69, 1.32 GSE)

WIND/WAVES Summary Plot (Page 1) for 01-APR-1996, DOY = 92



```

RAD2
Antenna Ey .....
Mode LIN(1) .....
SUM/SEP SUM .....
Toggle OFF .....

RAD1
Antenna Ex .....
Mode LIS(0.2) .....
SUM/SEP SUM .....
Toggle OFF .....

TNR
Antenna ExEy .....
Mode A-32 .....
Sweep ACE .....
  
```