

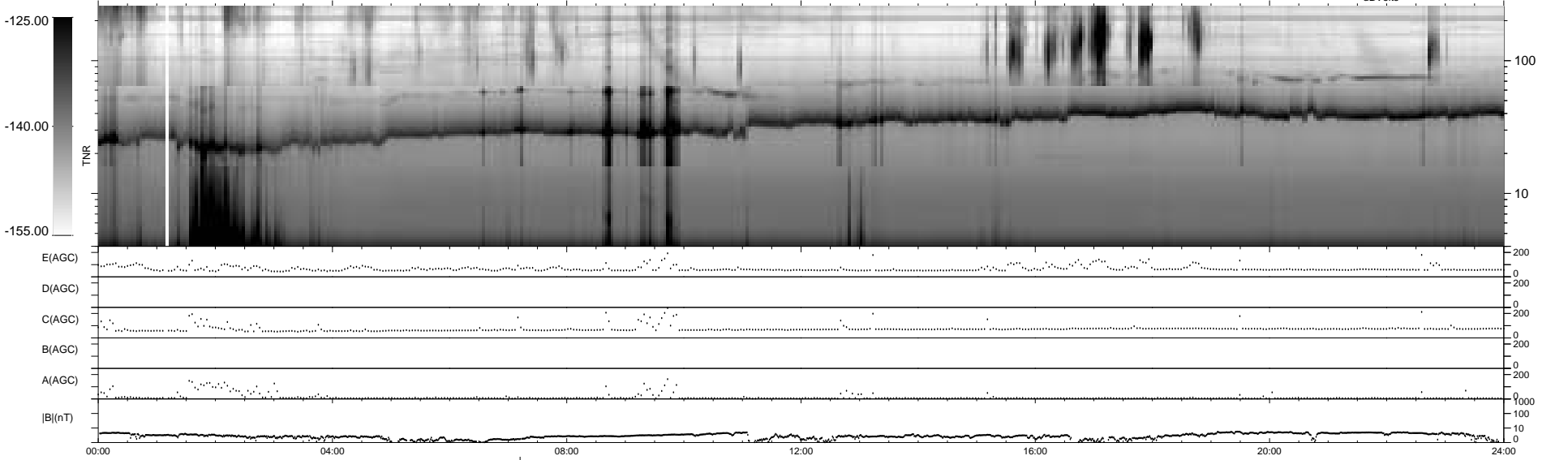
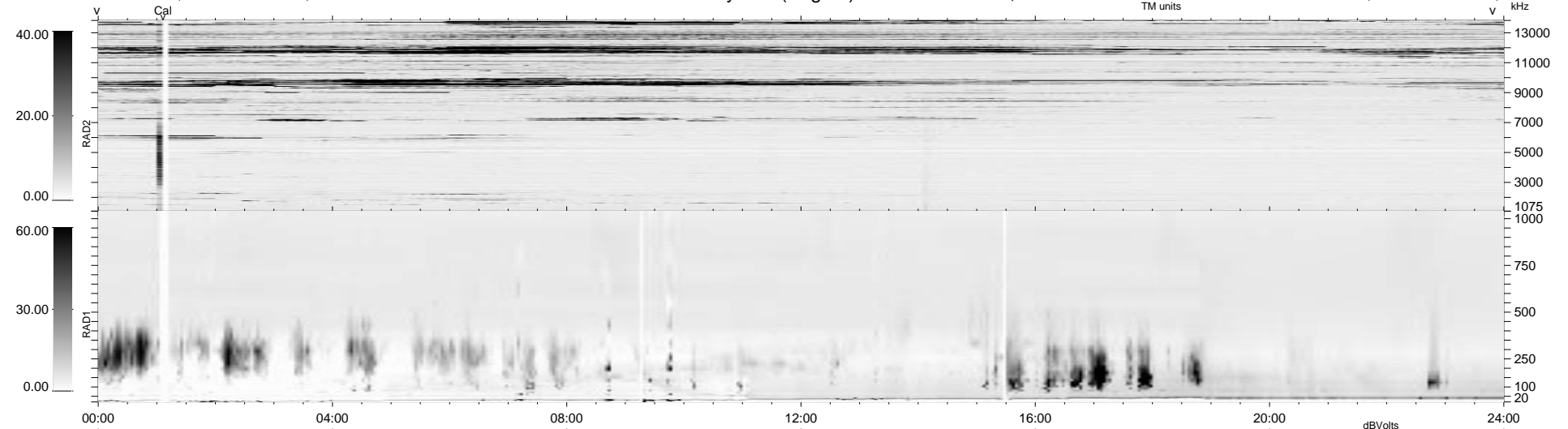
19 bad + 1858 good MF/1878MF projected (98%) - 1 missing MF  
 Avg interval = 180 secs  
 Re = 40.09 (33.06, -22.52, 2.66 GSE)

1.7d VMS-SunOS

LZ version = v01

WIND/WAVES Summary Plot (Page 1) for 30-MAR-1996, DOY = 90

DAILY Wed Sep 24, 2008  
 Re = 51.51 (48.15, -18.15, 2.39 GSE)



```

RAD2
Antenna Ey
Mode LIN(1)
SUM/SEP SUM
Toggle OFF

RAD1
Antenna Ex
Mode LIS(2,4)
SUM/SEP SUM
Toggle OFF

TNR
Antenna ExEy
Mode A-32
Sweep ACE
  
```