

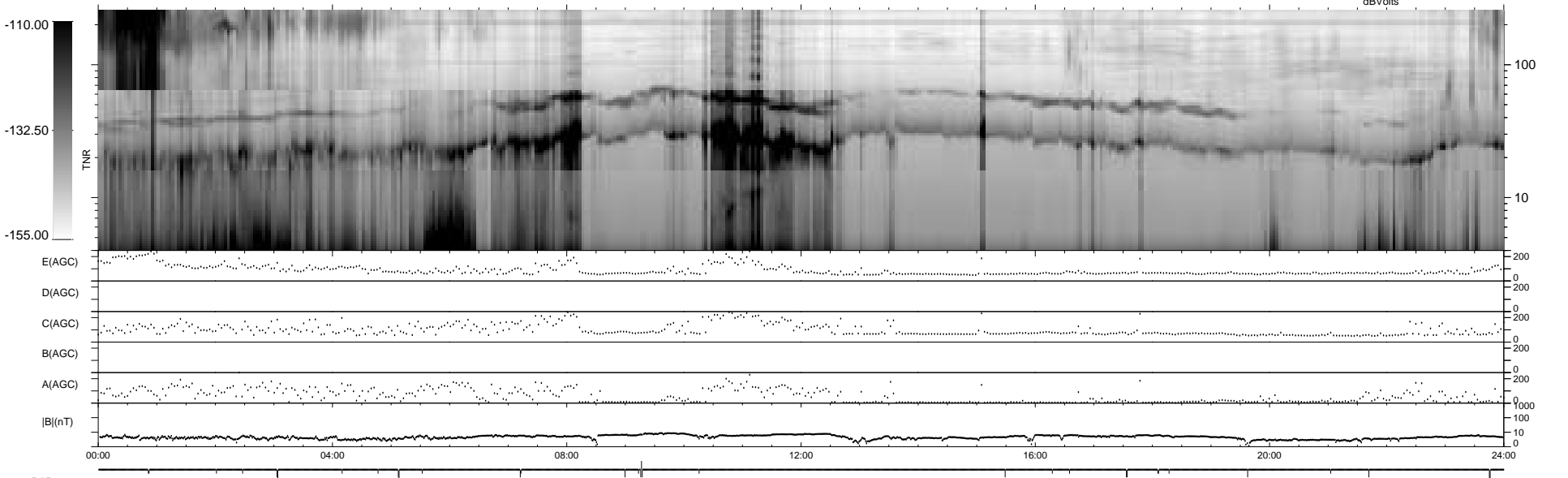
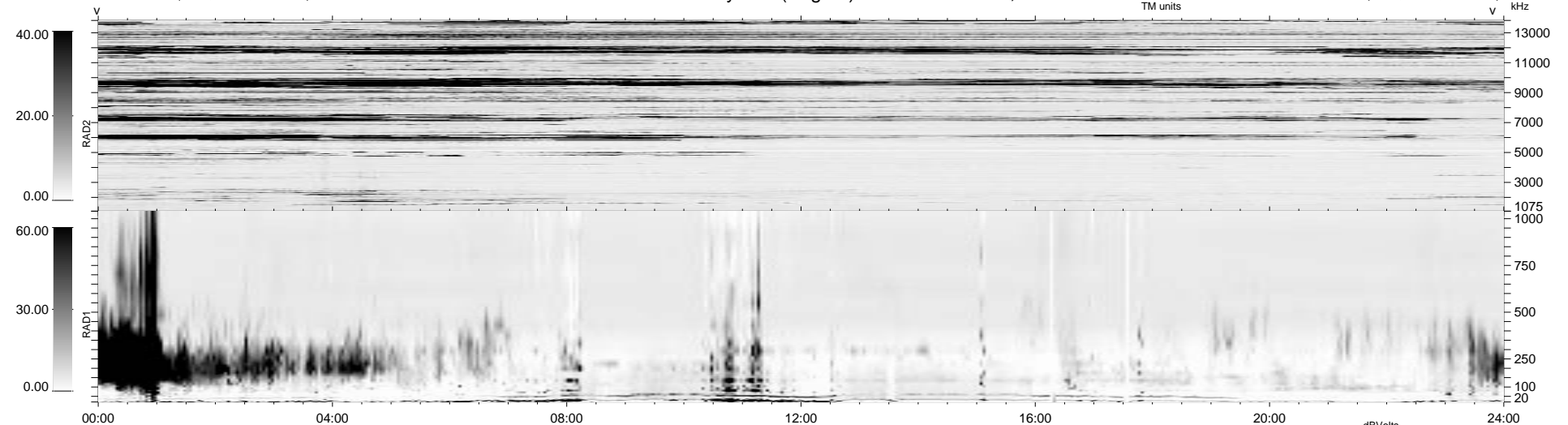
31 bad + 1846 good MF/1878MF projected (98%) - 1 missing MF
 Avg interval = 180 secs
 Re = 26.05 (12.06, -22.97, 2.40 GSE)

1.7d VMS-SunOS

LZ version = v01

WIND/WAVES Summary Plot (Page 1) for 29-MAR-1996, DOY = 89

DAILY Wed Sep 24, 2008
 Re = 40.00 (32.94, -22.54, 2.66 GSE)



```

RAD2
Antenna Ey .....
Mode LIN(1) .....
SUM/SEP SUM .....
Toggle OFF .....

RAD1
Antenna Ex .....
Mode LIS(2/4) .....
SUM/SEP SUM .....
Toggle OFF .....

TNR
Antenna ExEy .....
Mode A-32 .....
Sweep ACE .....
  
```