

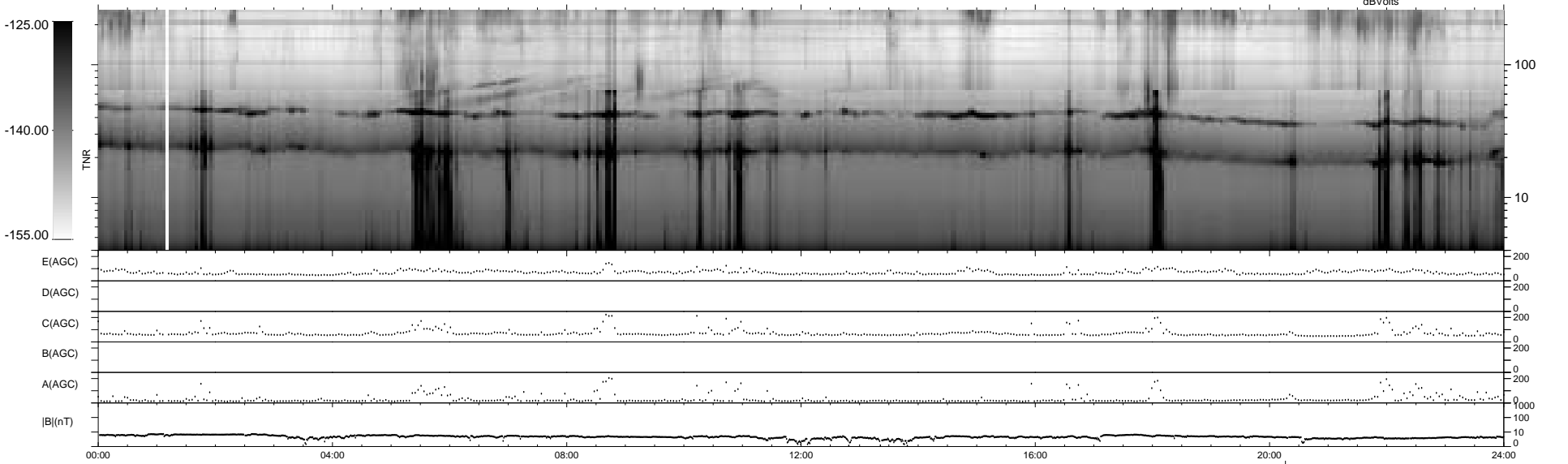
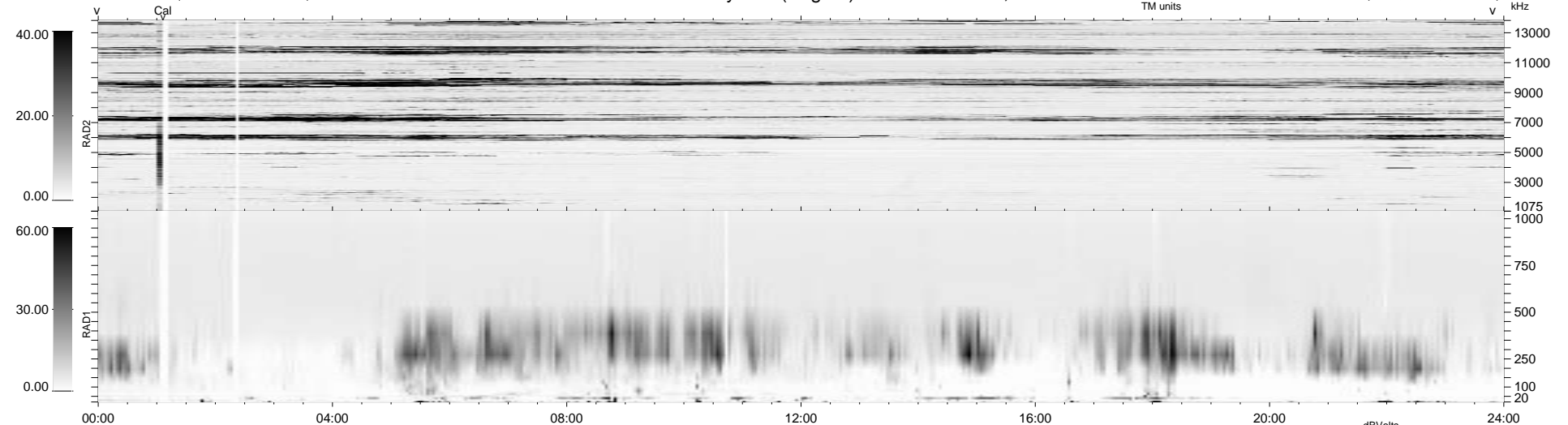
36 bad + 1841 good MF/1878MF projected (98%) - 1 missing MF  
 Avg interval = 180 secs  
 Re = 73.64 (47.41, -56.14, 4.76 GSE)

1.7d VMS-SunOS

LZ version = v01

### WIND/WAVES Summary Plot (Page 1) for 18-JAN-1996, DOY = 18

DAILY Wed Sep 24, 2008  
 Re = 82.72 (59.24, -57.42, 6.04 GSE)



RAD2  
 Antenna Ey .....  
 Mode LIN(1) .....  
 SUM/SEP SUM .....  
 Toggle OFF .....  
 RAD1  
 Antenna Ex .....  
 Mode LIS(0.2) .....  
 SUM/SEP SUM .....  
 Toggle OFF .....  
 TNR  
 Antenna ExEy .....  
 Mode A-32 .....  
 Sweep ACE .....