

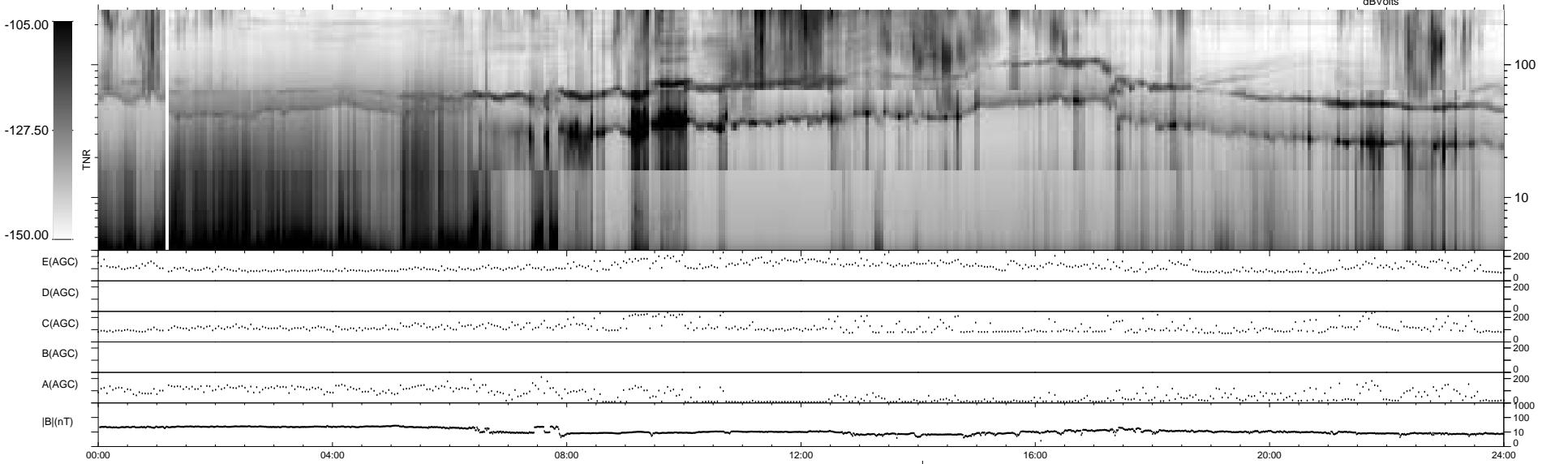
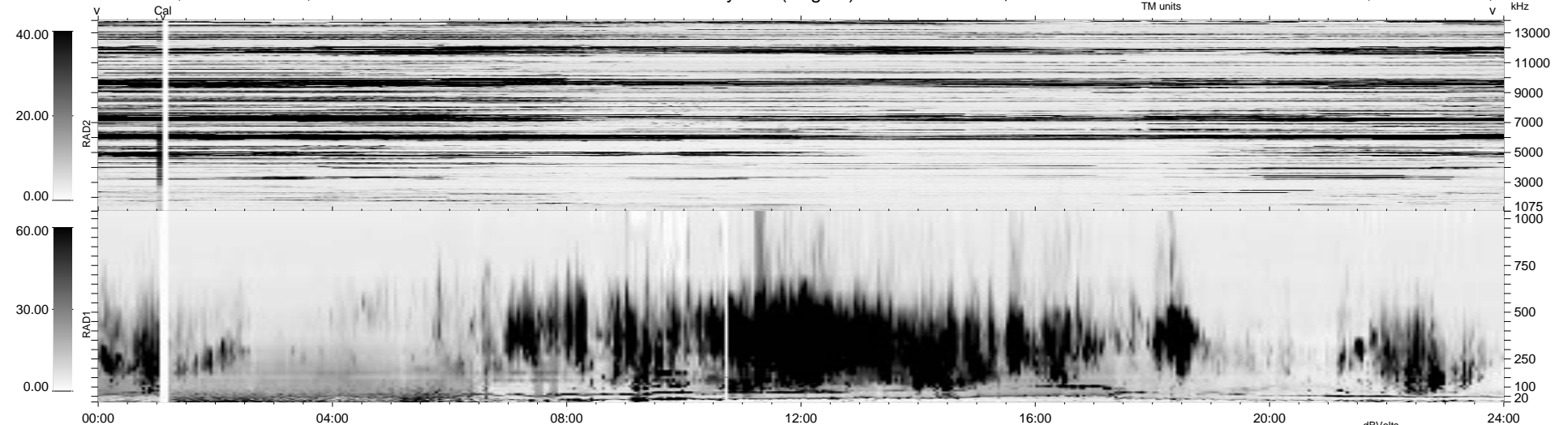
16 bad + 1861 good MF/1878MF projected (99%) - 1 missing MF  
 Avg interval = 180 secs  
 Re = 22.71 (-8.39, -21.08, -0.93 GSE)

1.7d VMS-SunOS

LZ version = v01

### WIND/WAVES Summary Plot (Page 1) for 14-JAN-1996, DOY = 14

DAILY Wed Sep 24, 2008  
 Re = 38.38 (6.31, -37.85, 0.46 GSE)



```

RAD2
Antenna Ey .....
Mode LIN(1) .....
SUM/SEP SUM .....
Toggle OFF .....

RAD1
Antenna Ex .....
Mode LIS(2/4) .....
SUM/SEP SUM .....
Toggle OFF .....

TNR
Antenna ExEy .....
Mode A-32 .....
Sweep ACE .....
  
```