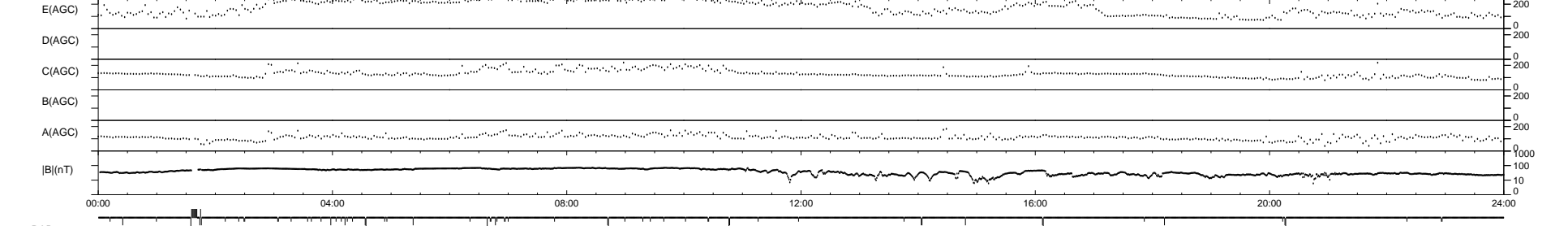
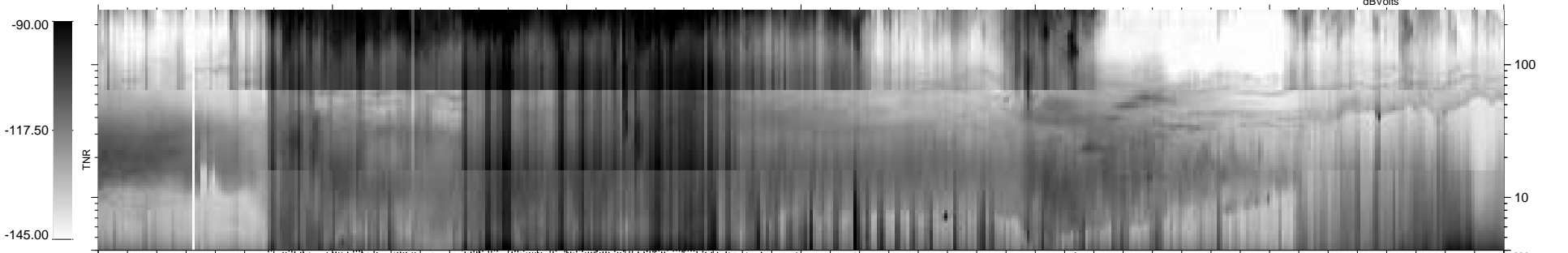
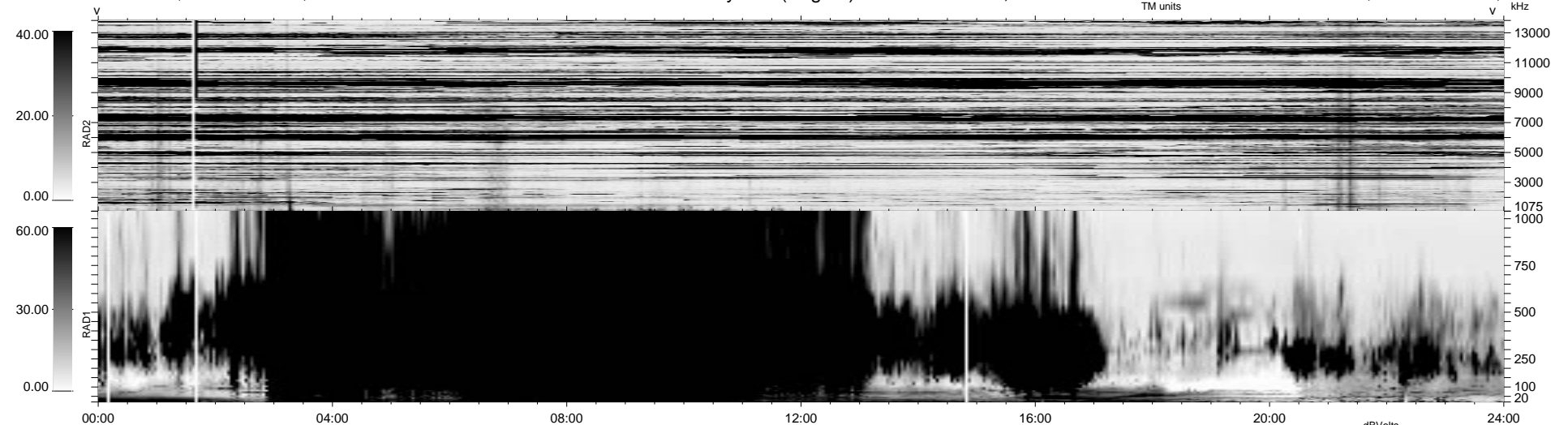


64 bad + 1805 good MF/1878MF projected (96%) - 9 missing MFs
 Avg interval = 180 secs
 Re = 13.64 (-7.18, 11.59, -0.61 GSE)

1.7d VMS-SunOS LZ version = v01
 DAILY Wed Sep 24, 2008
 Re = 22.59 (-8.48, -20.91, -0.94 GSE)

WIND/WAVES Summary Plot (Page 1) for 13-JAN-1996, DOY = 13



```

RAD2
Antenna Ey
Mode LIN(1)
SUM/SEP SUM
Toggle OFF

RAD1
Antenna Ex
Mode LIS(2/4)
SUM/SEP SUM
Toggle OFF

TNR
Antenna ExEy
Mode A-32
Sweep ACE
  
```