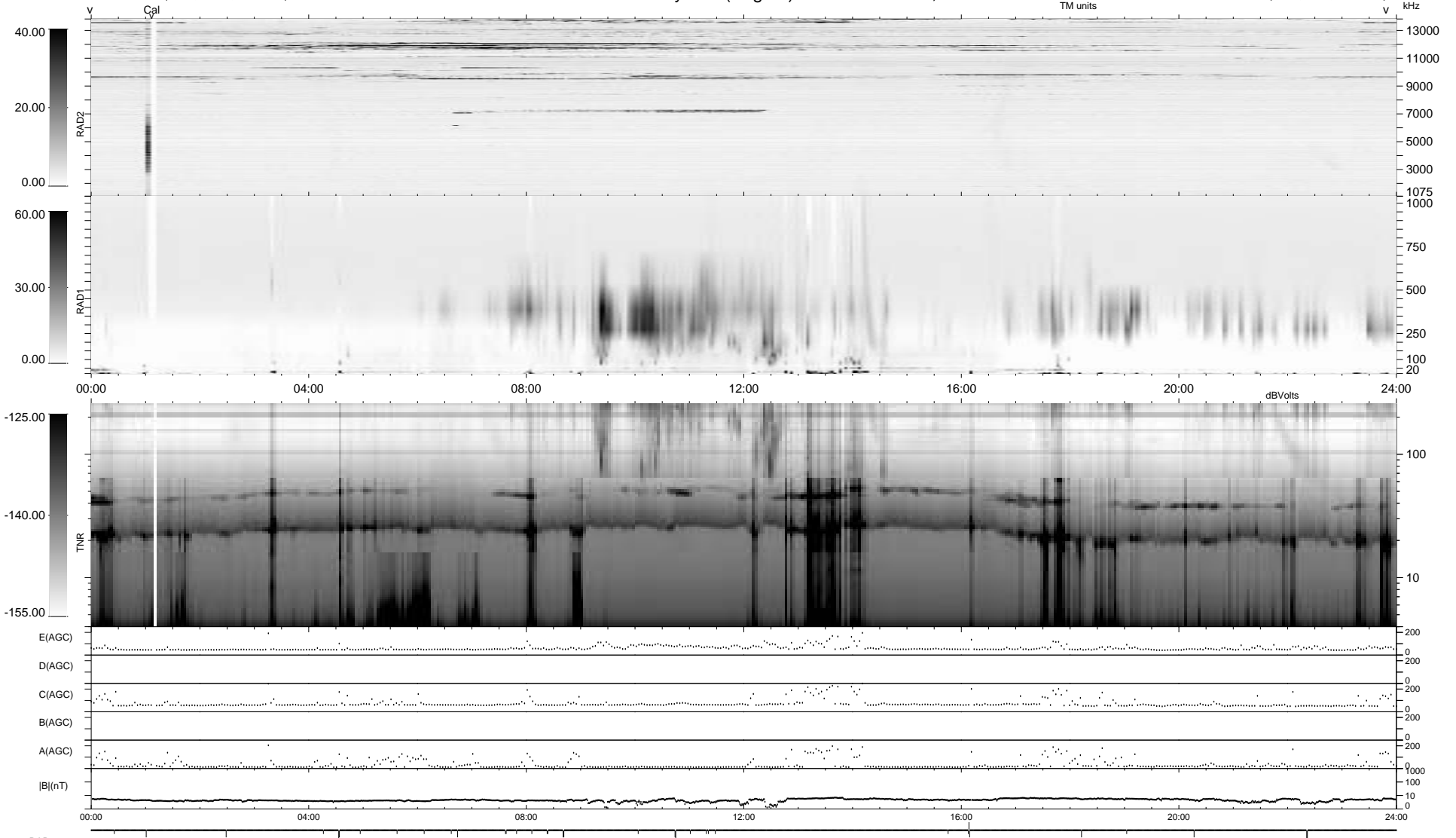


34 bad + 1844 good MF/1879MF projected (98%) - 1 missing MF  
 Avg interval = 180 secs  
 Re = 89.02 (87.62, -13.66, 7.79 GSE)

1.7d VMS-SunOS LZ version = v01  
 DAILY Wed Sep 24, 2008  
 Re = 86.51 (85.66, -9.26, 7.79 GSE)

WIND/WAVES Summary Plot (Page 1) for 04-JAN-1996, DOY = 4



RAD2  
 Antenna Ey  
 Mode LIN(1)  
 SUM/SEP SUM  
 Toggle OFF  
 RAD1  
 Antenna Ex  
 Mode LIS(0.2)  
 SUM/SEP SUM  
 Toggle OFF  
 TNR  
 Antenna ExEy  
 Mode A-32  
 Sweep ACE