

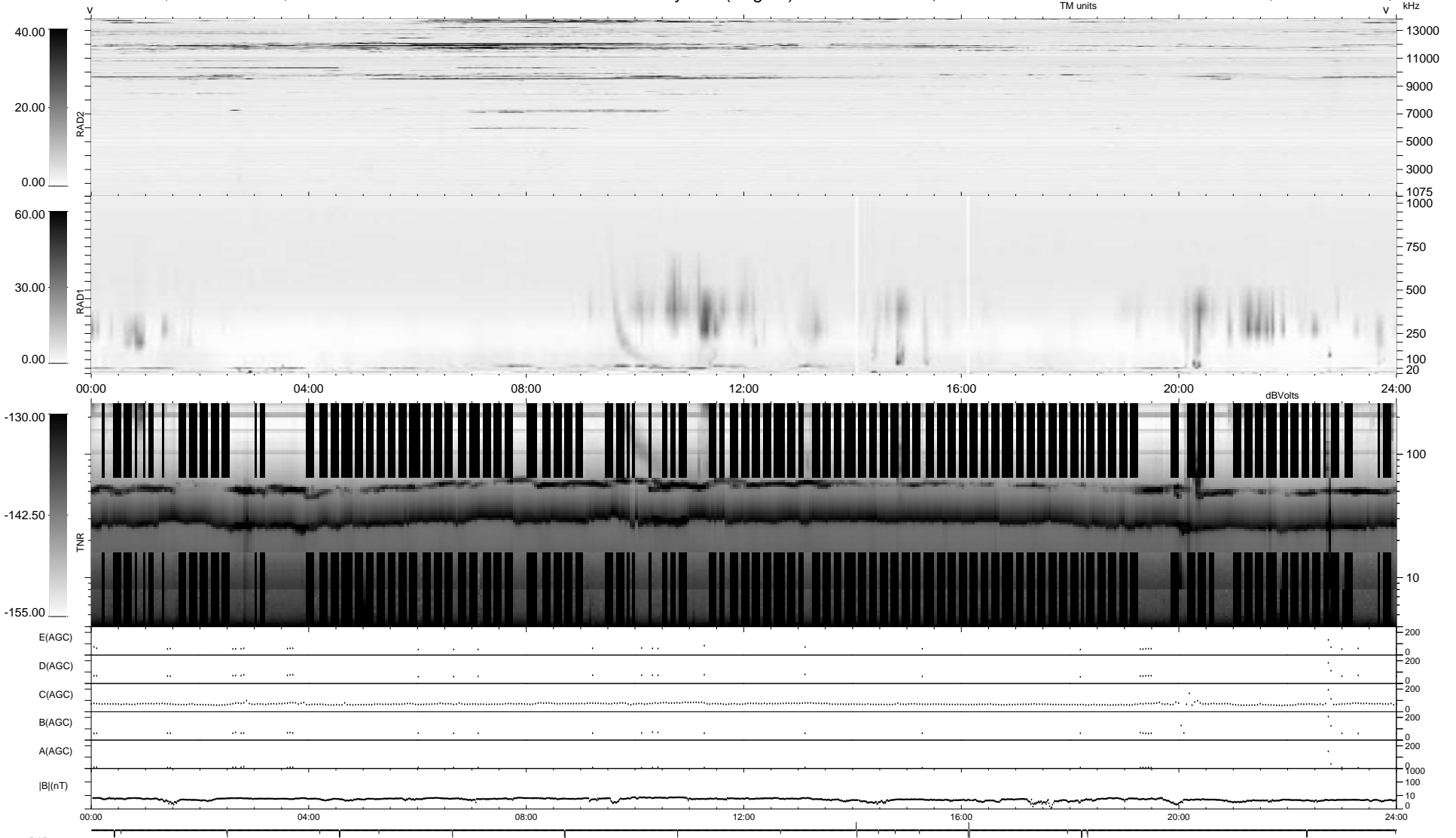
28 bad + 1848 good MF/1878MF projected (98%) - 2 missing MFs  
 Avg interval = 180 secs  
 Re = - 90.63 (86.71, -25.41, 7.04 GSE)

1.7d VMS-SunOS LZ version = v01

DAILY Wed Sep 24, 2008

Re = 91.07 (88.12, -21.79, 7.41 GSE)

### WIND/WAVES Summary Plot (Page 1) for 01-JAN-1996, DOY = 1



RAD2  
 Antenna Ey  
 Mode LIN(1)  
 SUM/SEP SUM  
 Toggle OFF

RAD1  
 Antenna Ex  
 Mode LIS(0.2)  
 SUM/SEP SUM  
 Toggle OFF

TNR  
 Antenna ExEy  
 Mode A-32  
 Sweep NN