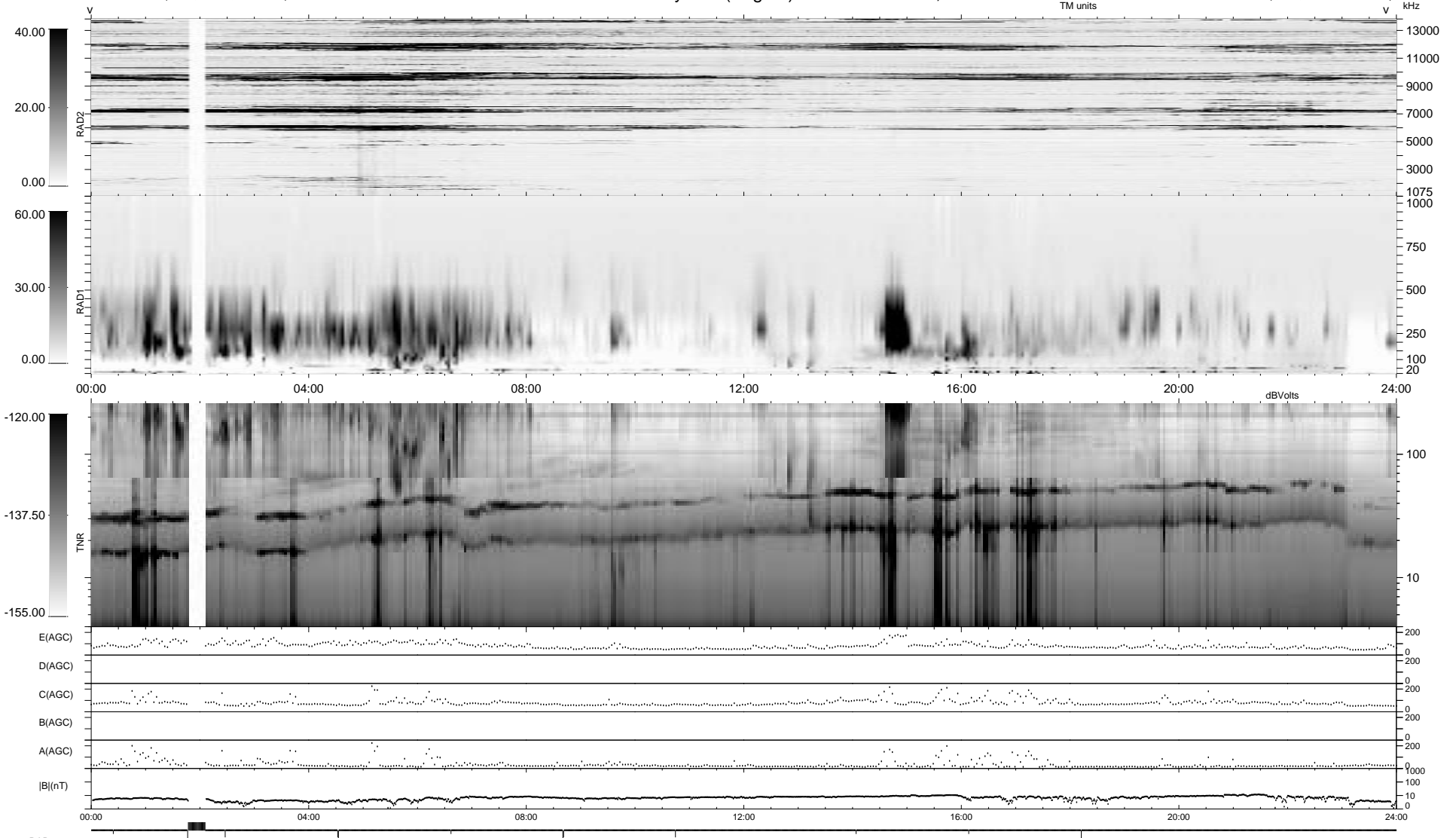


12 bad + 1841 good MF/1878MF projected (98%) - 25 missing MFs
 Avg interval = 180 secs
 Re = - 55.58 (40.16, -38.41, 1.45 GSE)

1.7d VMS-SunOS LZ version = v01
 DAILY Thu Sep 25, 2008
 Re = 64.87 (51.83, -38.93, 2.57 GSE)

WIND/WAVES Summary Plot (Page 1) for 25-DEC-1995, DOY = 359



```

RAD2
Antenna Ey .....
Mode LIN(1) .....
SUM/SEP SUM .....
Toggle OFF .....

RAD1
Antenna Ex .....
Mode LIS(0.2) .....
SUM/SEP SUM .....
Toggle OFF .....

TNR
Antenna ExEy .....
Mode A-32 .....
Sweep ACE .....
  
```