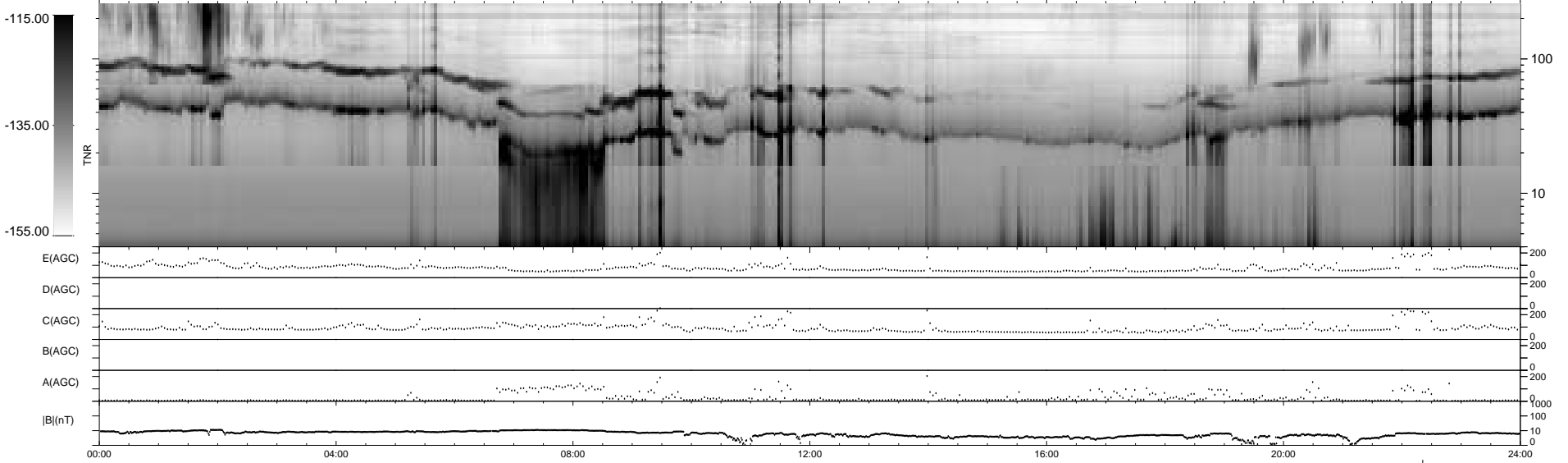
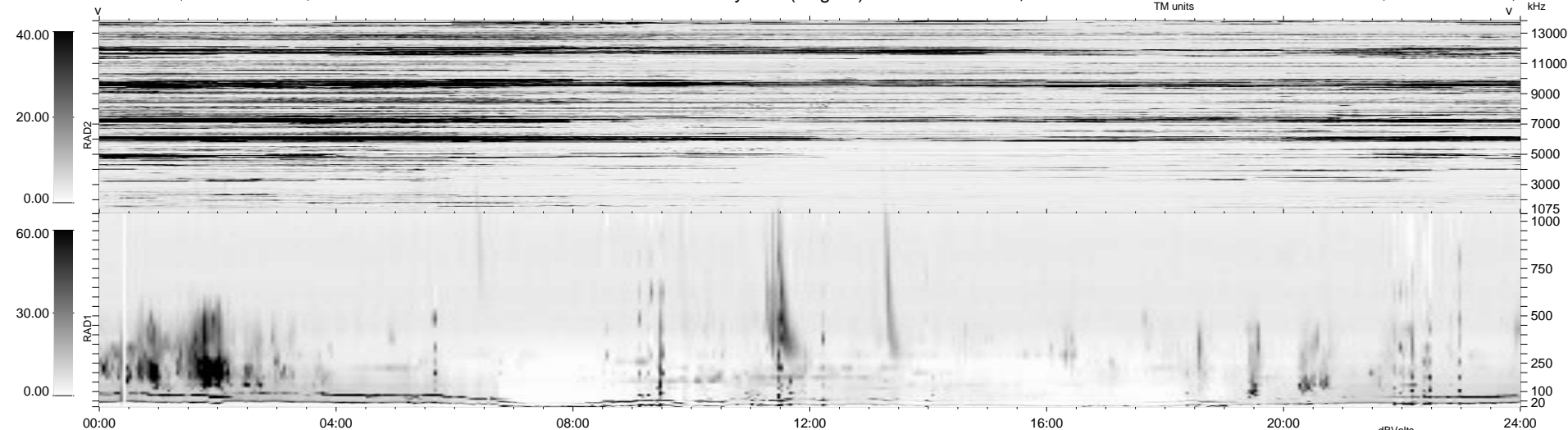


15 bad + 1862 good MF/1878MF projected (99%) - 1 missing MF
 Avg interval = 180 secs
 Re = 29.31 (7.53, -28.31, -1.01 GSE)

1.7d VMS-SunOS LZ version = v01

WIND/WAVES Summary Plot (Page 1) for 23-DEC-1995, DOY = 357

DAILY Thu Sep 25, 2008
 Re = 43.86 (25.54, -35.66, 0.22 GSE)



```

RAD2
Antenna Ey .....
Mode LIN(1) .....
SUM/SEP SUM .....
Toggle OFF .....

RAD1
Antenna Ex .....
Mode LIS(2/4) .....
SUM/SEP SUM .....
Toggle OFF .....

TNR
Antenna ExEy .....
Mode A-32 .....
Sweep ACE .....
  
```