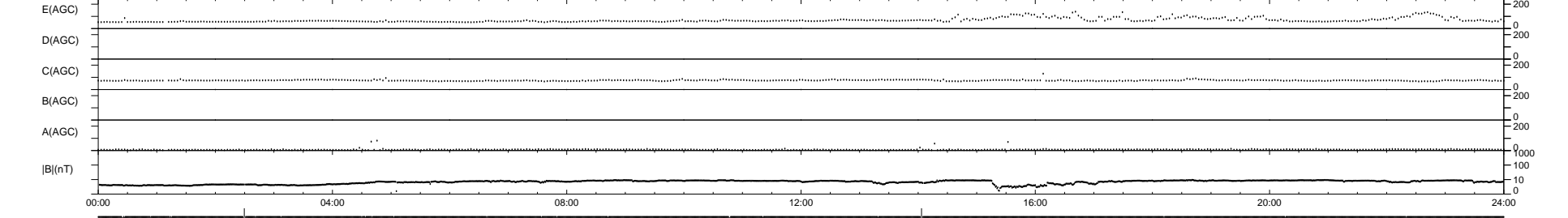
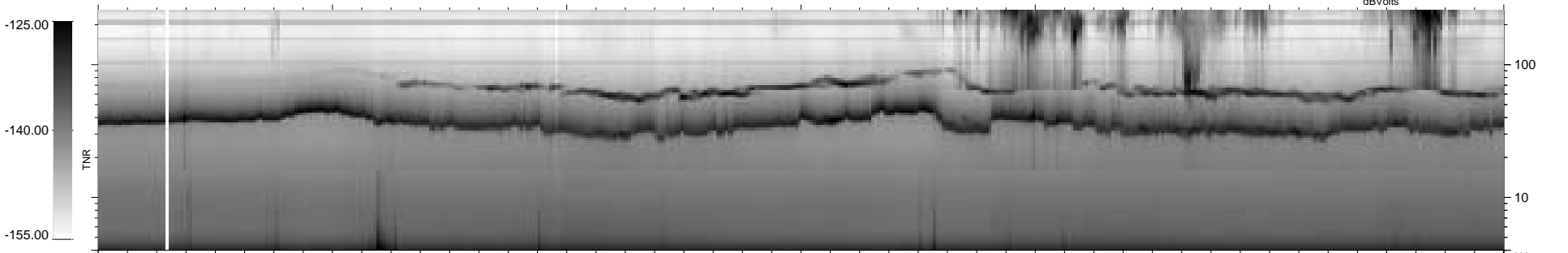
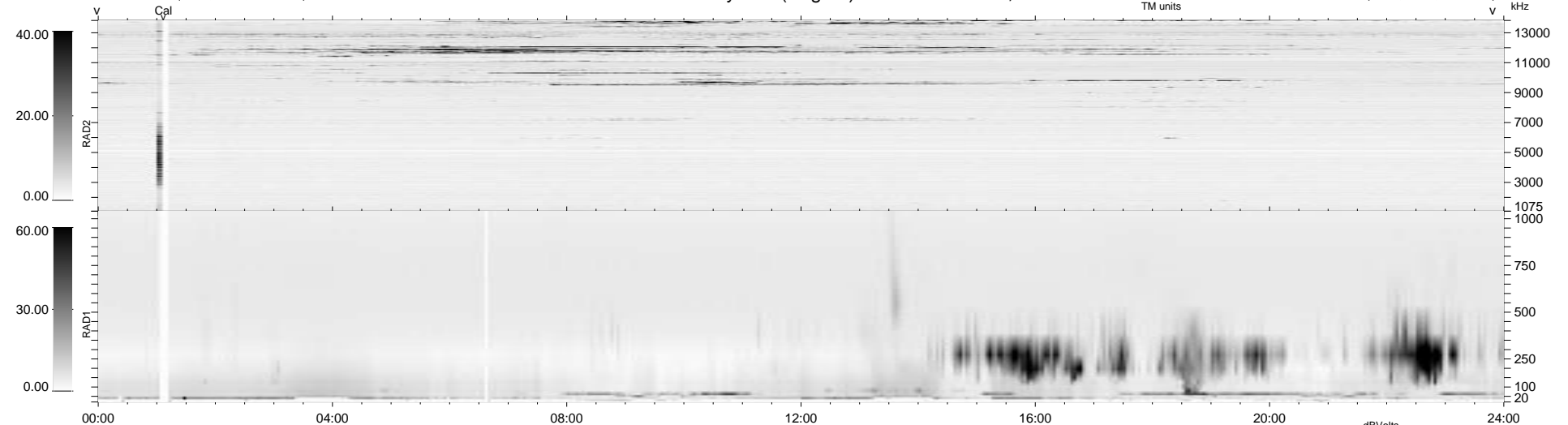


27 bad + 1850 good MF/1879MF projected (98%) - 2 missing MFs  
 Avg interval = 180 secs  
 Re = 90.50 (88.73, 16.10, 7.65 GSE)

1.7d VMS-SunOS LZ version = v01

WIND/WAVES Summary Plot (Page 1) for 12-DEC-1995, DOY = 346

DAILY Thu Sep 25, 2008  
 Re = 88.67 (86.12, 19.59, 7.84 GSE)



```

RAD2
Antenna Ey .....
Mode LIN(1) .....
SUM/SEP SUM .....
Toggle OFF .....

RAD1
Antenna Ex .....
Mode LIS(0.2) .....
SUM/SEP SUM .....
Toggle OFF .....

TNR
Antenna ExEy .....
Mode A-32 .....
Sweep ACE .....
  
```