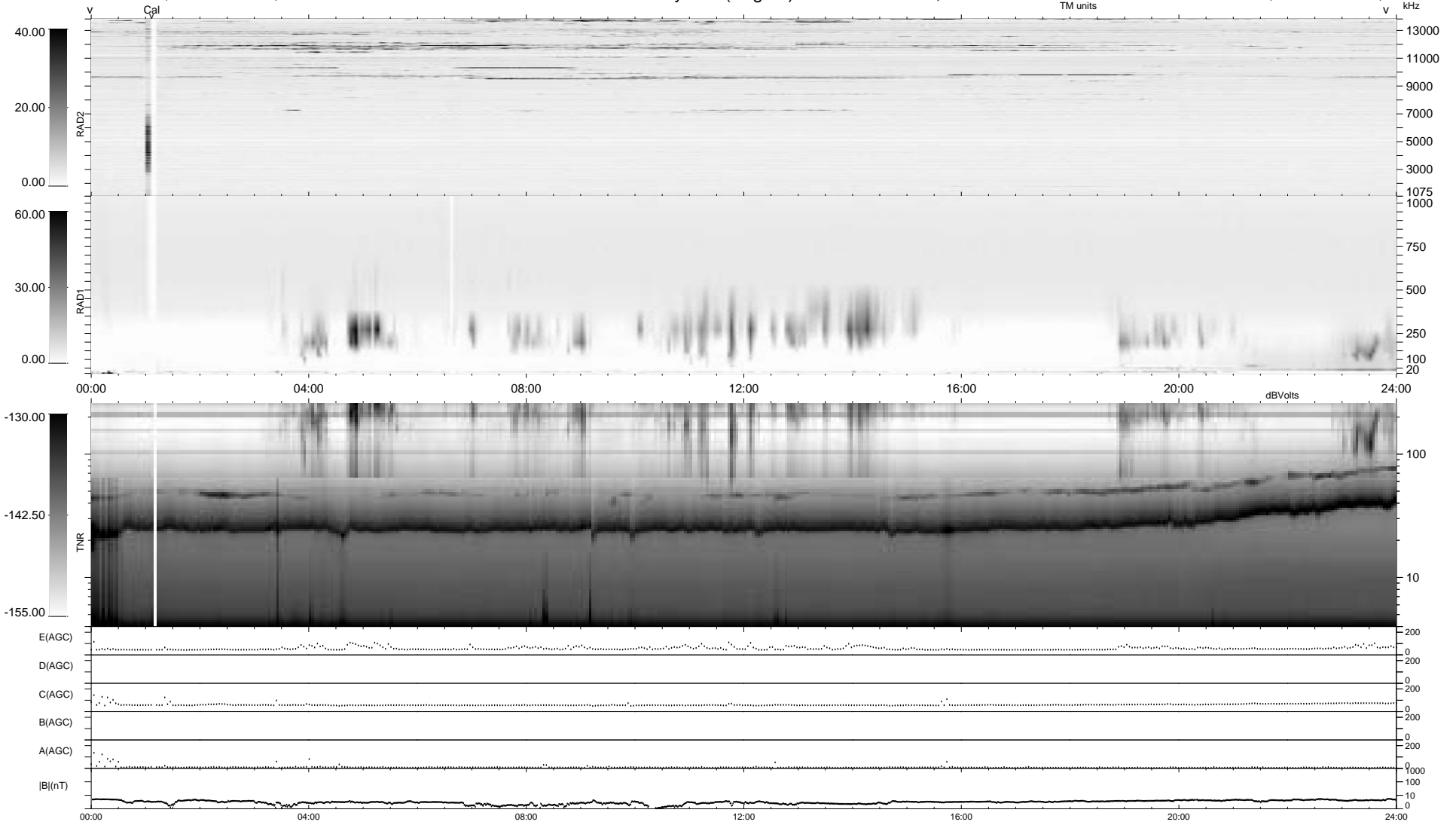


16 bad + 1863 good MF/1879MF projected (99%) - 0 missing MFs
 Avg interval = 180 secs
 Re = 88.06 (87.86, 0.70, 5.78 GSE)

1.7d VMS-SunOS LZ version = v01

WIND/WAVES Summary Plot (Page 1) for 08-DEC-1995, DOY = 342

DAILY Thu Sep 25, 2008
 Re = 90.13 (89.78, 4.70, 6.40 GSE)



RAD2
 Antenna Ey
 Mode LIN(1)
 SUM/SEP SUM
 Toggle OFF

RAD1
 Antenna Ex
 Mode LIS(0.2)
 SUM/SEP SUM
 Toggle OFF

TNR
 Antenna ExEy
 Mode A-32
 Sweep ACE