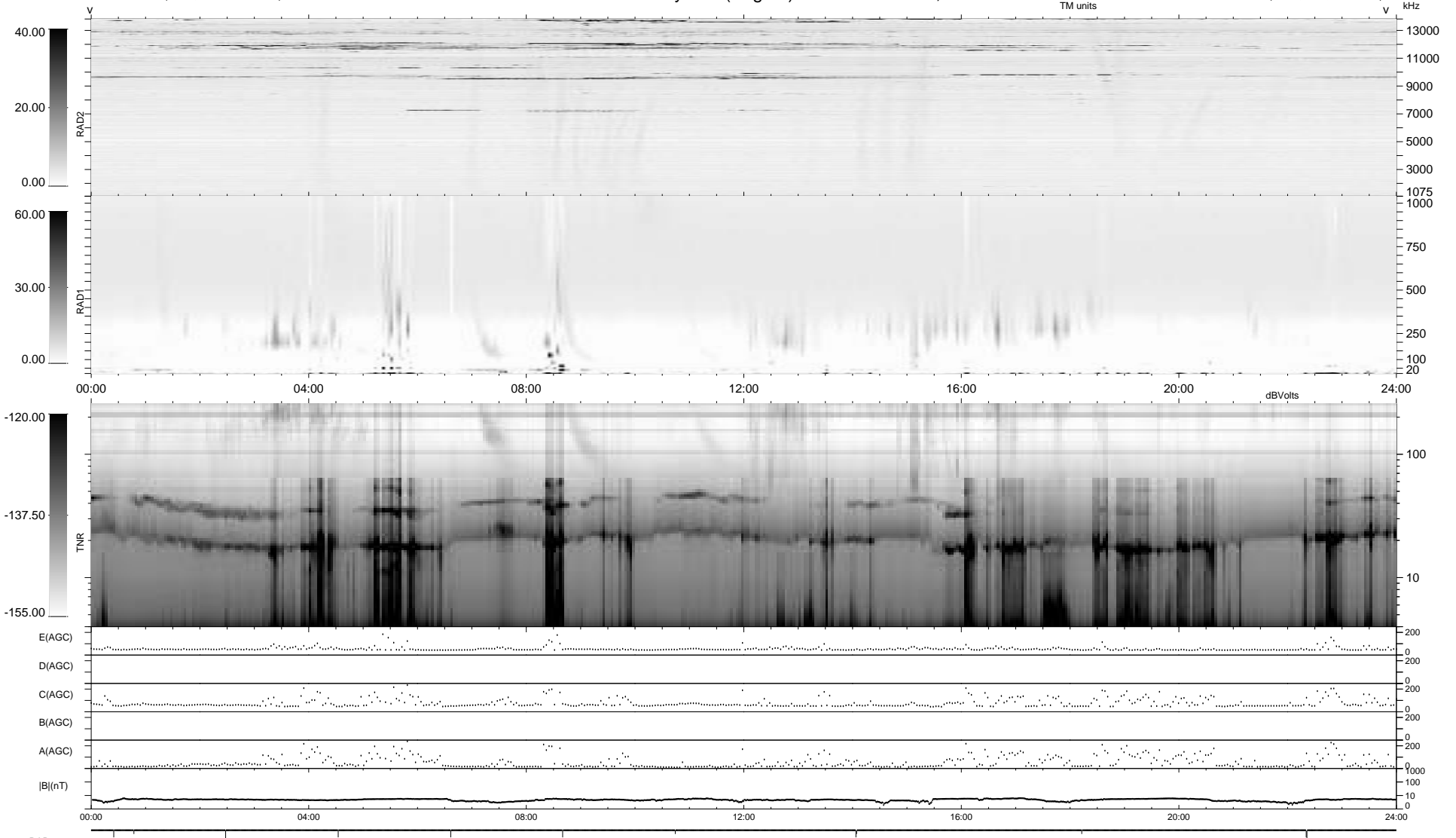


12 bad + 1866 good MF/1878MF projected (99%) - 0 missing MFs
 Avg interval = 180 secs
 Re = 84.93 (84.71, -3.42, 5.07 GSE)

1.7d VMS-SunOS LZ version = v01
 DAILY Thu Sep 25, 2008
 Re = 88.04 (87.85, 0.67, 5.78 GSE)

WIND/WAVES Summary Plot (Page 1) for 07-DEC-1995, DOY = 341



```

RAD2
Antenna Ey .....
Mode LIN(1) .....
SUM/SEP SUM .....
Toggle OFF .....

RAD1
Antenna Ex .....
Mode LIS(0.2) .....
SUM/SEP SUM .....
Toggle OFF .....

TNR
Antenna ExEy .....
Mode A-32 .....
Sweep ACE .....
  
```