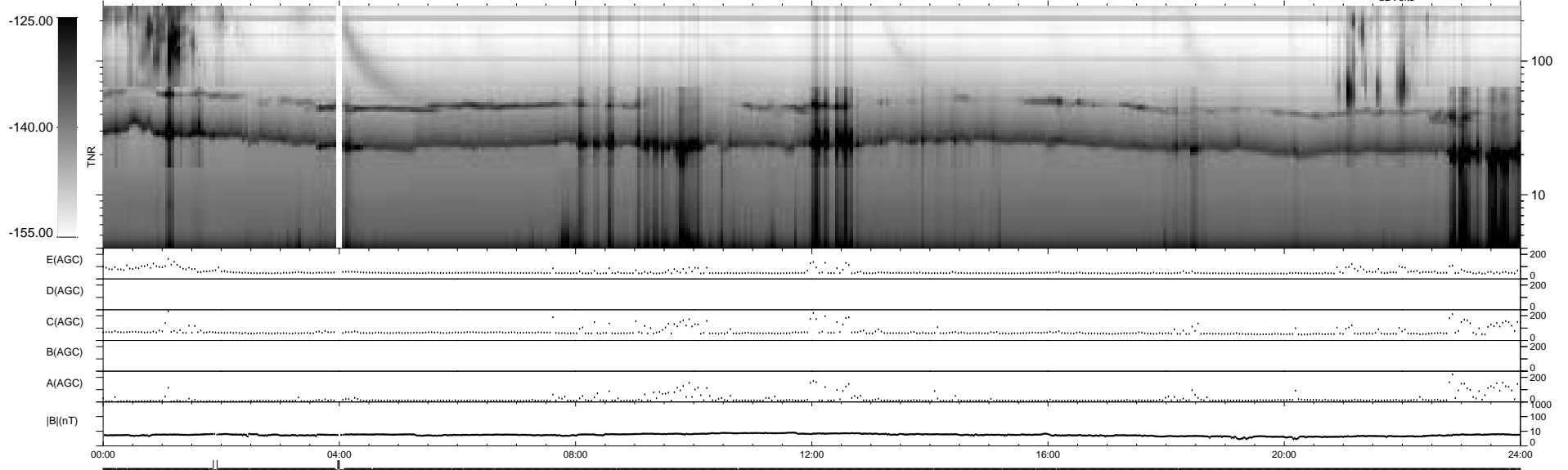
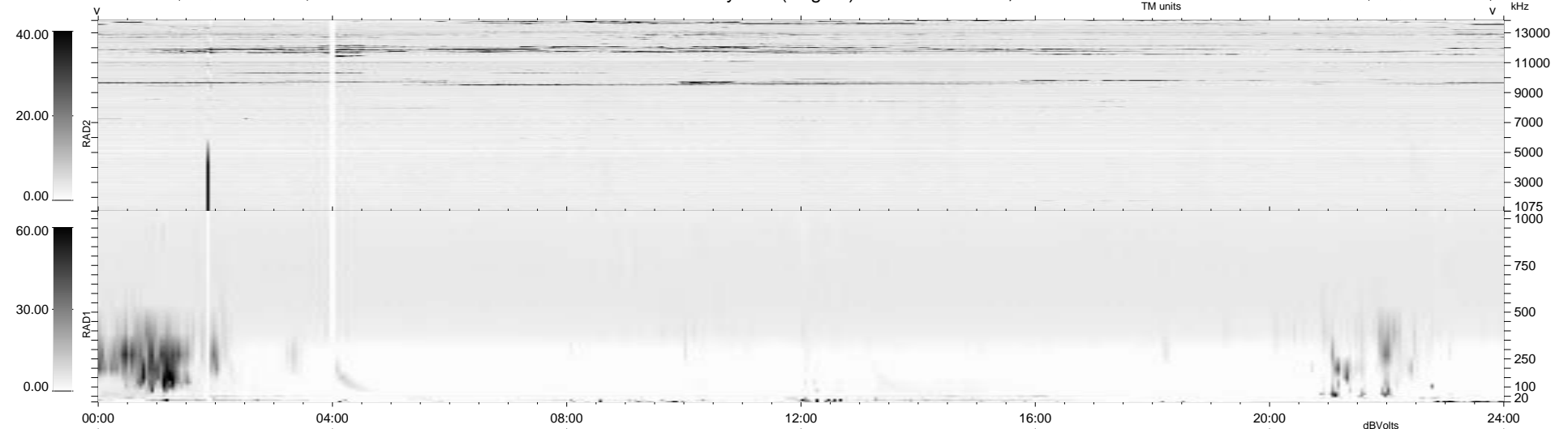


34 bad + 1840 good MF/1879MF projected (97%) - 5 missing MFs
 Avg interval = 180 secs
 Re = 75.25 (74.24, -11.83, 3.35 GSE)

1.7d VMS-SunOS LZ version = v01
 DAILY Thu Sep 25, 2008
 Re = 80.67 (80.19, -7.64, 4.25 GSE)

WIND/WAVES Summary Plot (Page 1) for 05-DEC-1995, DOY = 339



RAD2
 Antenna Ey
 Mode LIN(1)
 SUM/SEP SUM
 Toggle OFF

RAD1
 Antenna Ex
 Mode LIS(0.2)
 SUM/SEP SUM
 Toggle OFF

TNR
 Antenna ExEy
 Mode A-32
 Sweep ACE