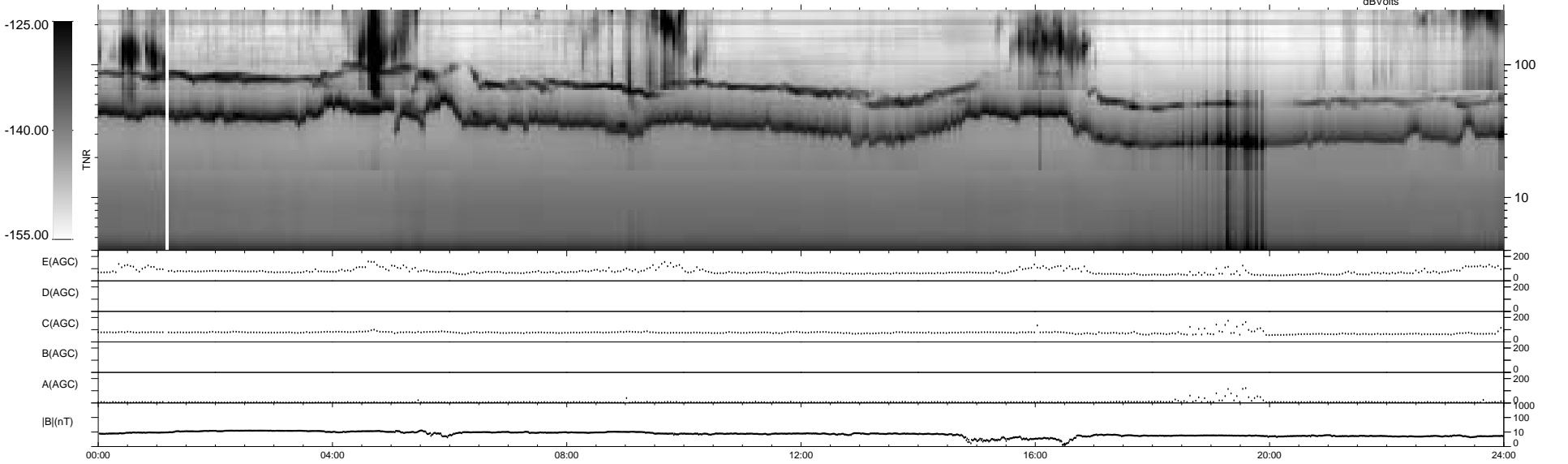
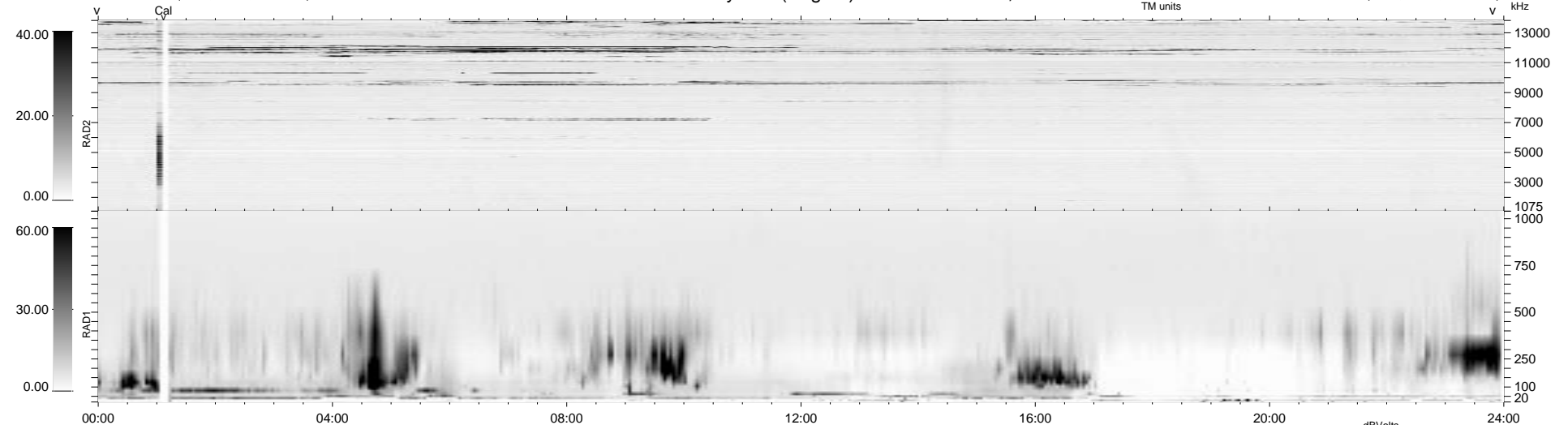


20 bad + 1858 good MF/1878MF projected (98%) - 0 missing MFs
 Avg interval = 180 secs
 Re = 68.41 (66.48, -15.97, 2.35 GSE)

1.7d VMS-SunOS LZ version = v01
 DAILY Thu Sep 25, 2008
 Re = 75.20 (74.19, -11.86, 3.34 GSE)

WIND/WAVES Summary Plot (Page 1) for 04-DEC-1995, DOY = 338



RAD2
 Antenna Ey
 Mode LIN(1)
 SUM/SEP SUM
 Toggle OFF
 RAD1
 Antenna Ex
 Mode LIS(0.2)
 SUM/SEP SUM
 Toggle OFF
 TNR
 Antenna ExEy
 Mode A-32
 Sweep ACE