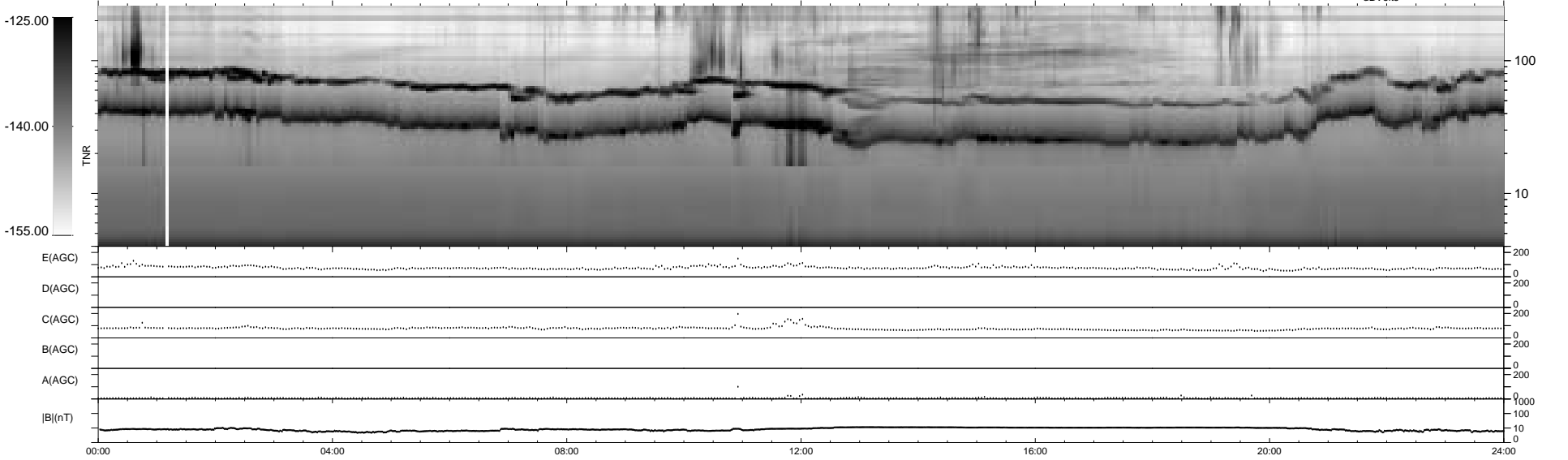
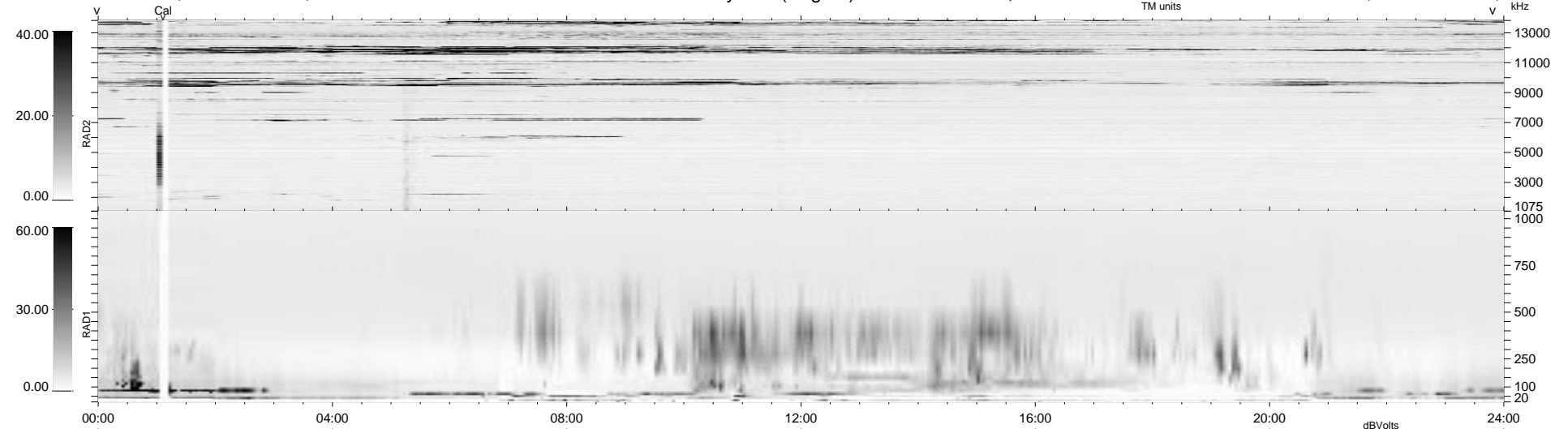


16 bad + 1862 good MF/1878MF projected (99%) - 0 missing MFs
 Avg interval = 180 secs
 Re = 49.45 (43.76, -23.04, 0.13 GSE)

1.7d VMS-SunOS LZ version = v01
 DAILY Thu Sep 25, 2008
 Re = 59.88 (56.47, -19.87, 1.26 GSE)

WIND/WAVES Summary Plot (Page 1) for 02-DEC-1995, DOY = 336



```

RAD2
Antenna Ey .....
Mode LIN(1) .....
SUM/SEP SUM .....
Toggle OFF .....

RAD1
Antenna Ex .....
Mode LIS(2,4) LIS(0,2) .....
SUM/SEP SUM .....
Toggle OFF .....

TNR
Antenna ExEy .....
Mode A-32 .....
Sweep ACE .....
  
```