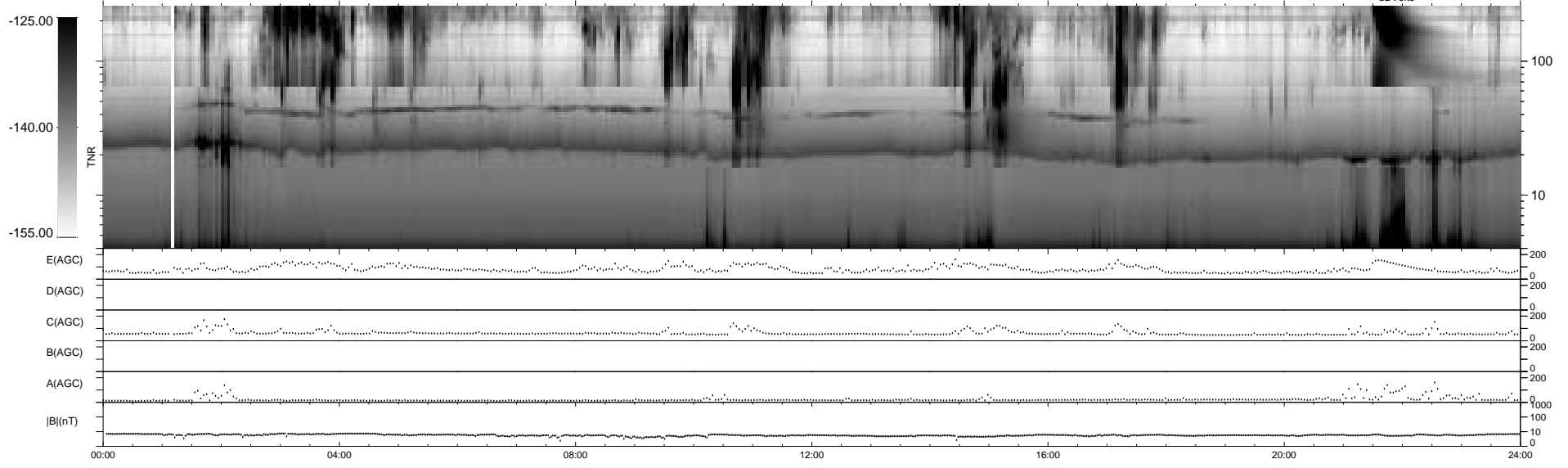
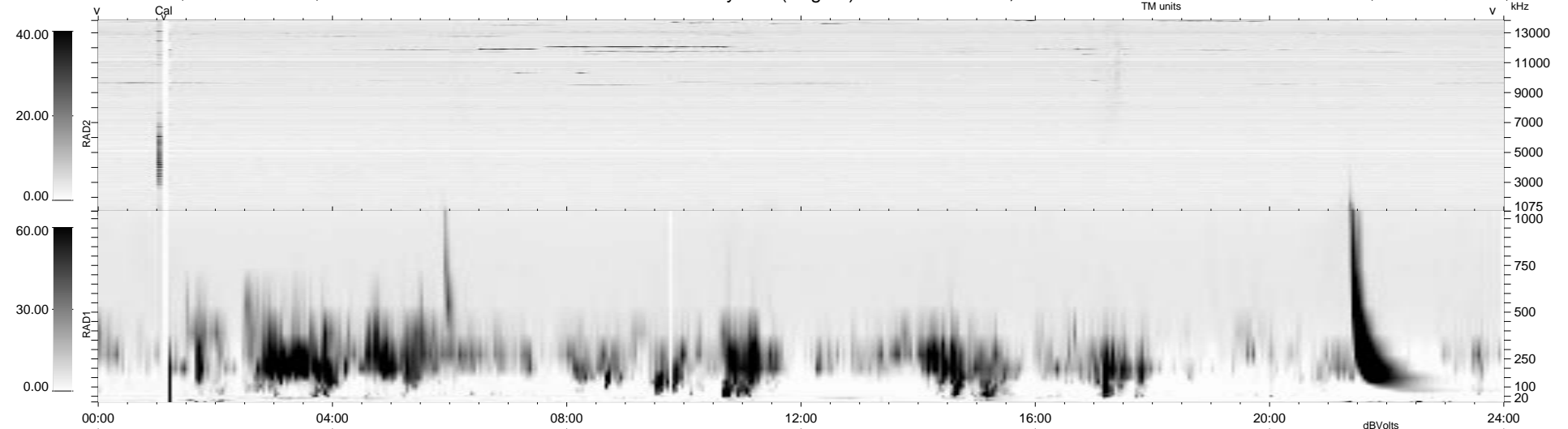


22 bad + 917 good MF/939MF projected (97%) - 0 missing MFs
 Avg interval = 180 secs
 Re = - 171.22 (170.19, 17.92, -5.50 GSE)

1.7d VMS-SunOS LZ version = v01
 DAILY Thu Sep 25, 2008
 Re = 169.65 (168.47, 19.27, -4.97 GSE)

WIND/WAVES Summary Plot (Page 1) for 02-NOV-1995, DOY = 306



RAD2
 Antenna Ey
 Mode LIN(1)
 SUM/SEP SUM
 Toggle OFF

RAD1
 Antenna Ex
 Mode LIS(0.2)
 SUM/SEP SUM
 Toggle OFF

TNR
 Antenna ExEy
 Mode A-32
 Sweep ACE