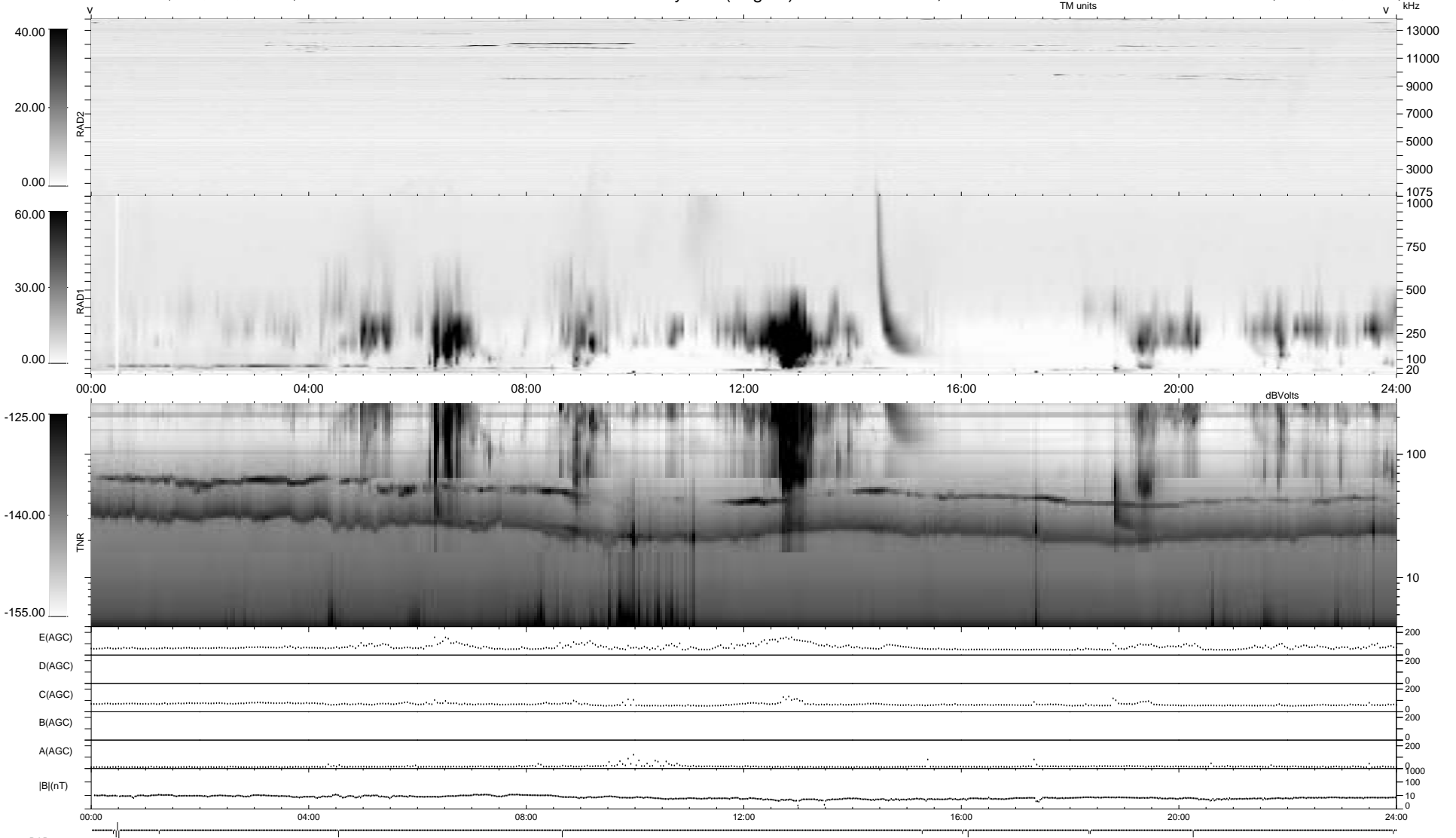


13 bad + 925 good MF/939MF projected (98%) - 1 missing MF  
 Avg interval = 180 secs  
 Re = - 172.66 (171.75, 16.55, -6.01 GSE)

1.7d VMS-SunOS LZ version = v01  
 DAILY Thu Sep 25, 2008  
 Re = 171.23 (170.21, 17.92, -5.50 GSE)

### WIND/WAVES Summary Plot (Page 1) for 01-NOV-1995, DOY = 305



```

RAD2
Antenna Ey .....
Mode LIN(1) .....
SUM/SEP SUM .....
Toggle OFF .....

RAD1
Antenna Ex .....
Mode LIS(0.2) .....
SUM/SEP SUM .....
Toggle OFF .....

TNR
Antenna ExEy .....
Mode A-32 .....
Sweep ACE .....
  
```