

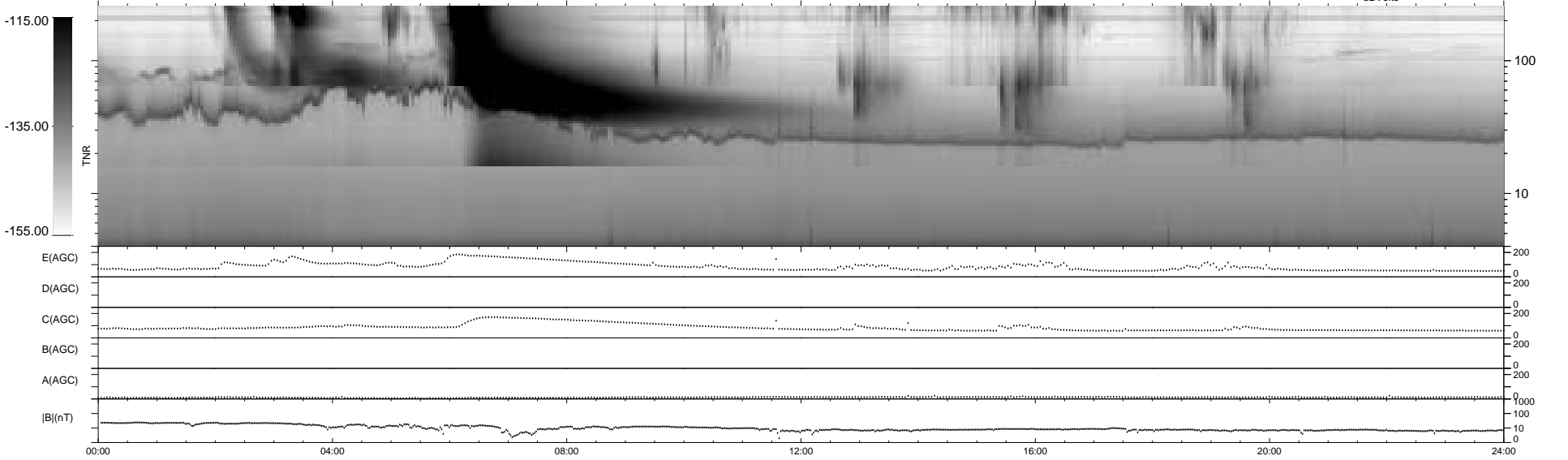
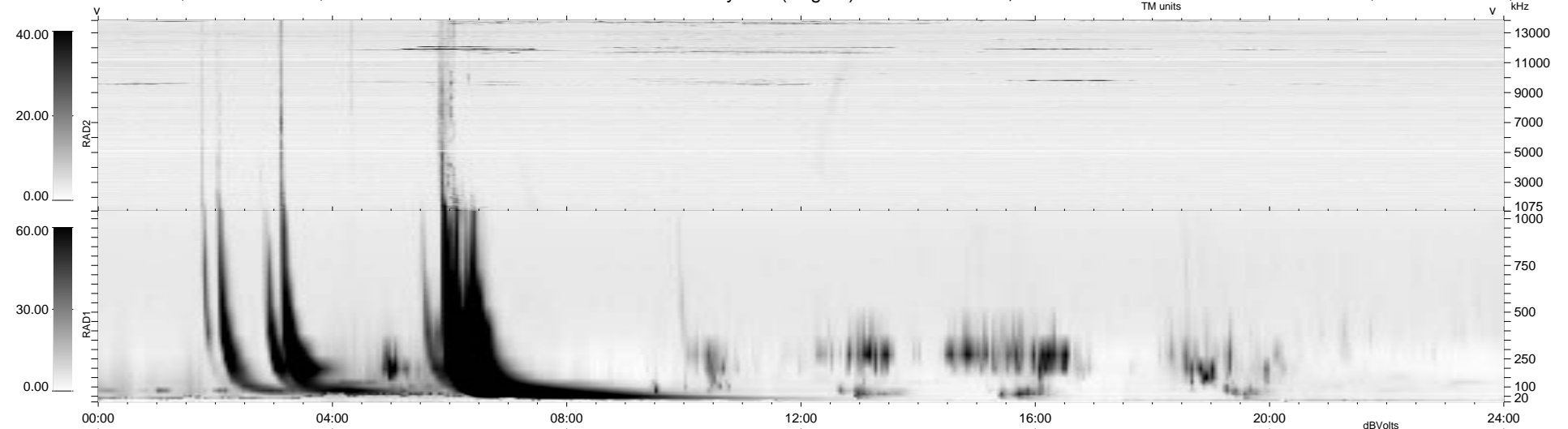
10 bad + 929 good MF/939MF projected (98%) - 0 missing MFs  
 Avg interval = 180 secs  
 Re = 176.74 (176.28, -1.82, -12.60 GSE)

1.7d VMS-SunOS

LZ version = v01

WIND/WAVES Summary Plot (Page 1) for 20-OCT-1995, DOY = 293

DAILY Thu Sep 25, 2008  
 Re = 177.35 (176.94, -0.23, -12.03 GSE)



RAD2  
 Antenna Ey .....  
 Mode LIN(1) .....  
 SUM/SEP SUM .....  
 Toggle OFF .....  
 RAD1  
 Antenna Ex .....  
 Mode LIS(0.2) .....  
 SUM/SEP SUM .....  
 Toggle OFF .....  
 TNR  
 Antenna ExEy .....  
 Mode A-32 .....  
 Sweep ACE .....