

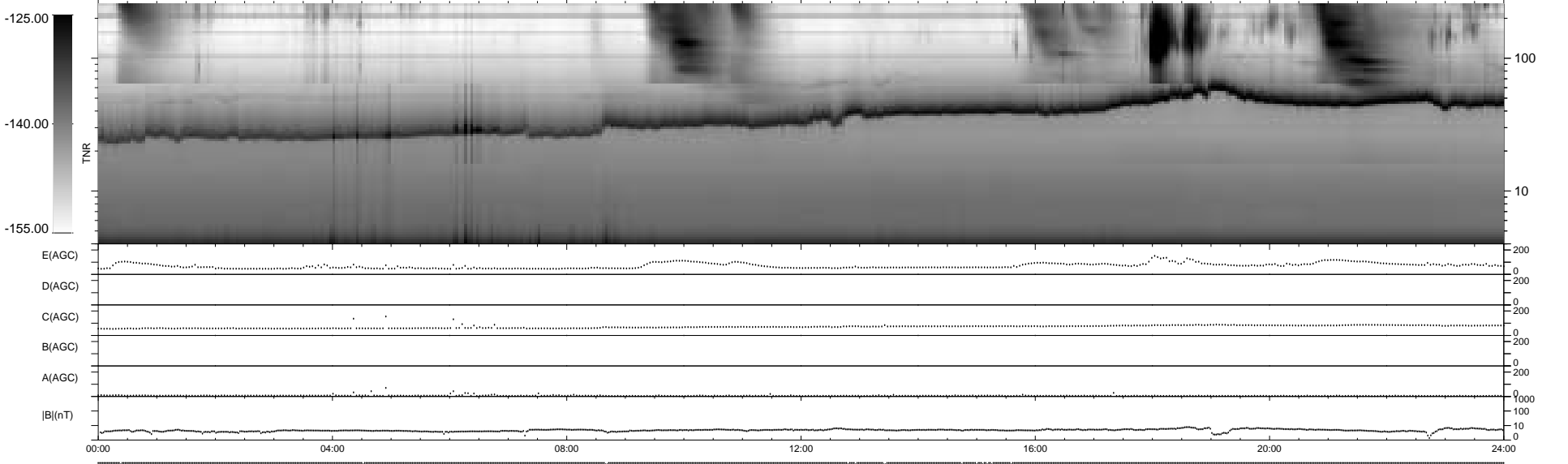
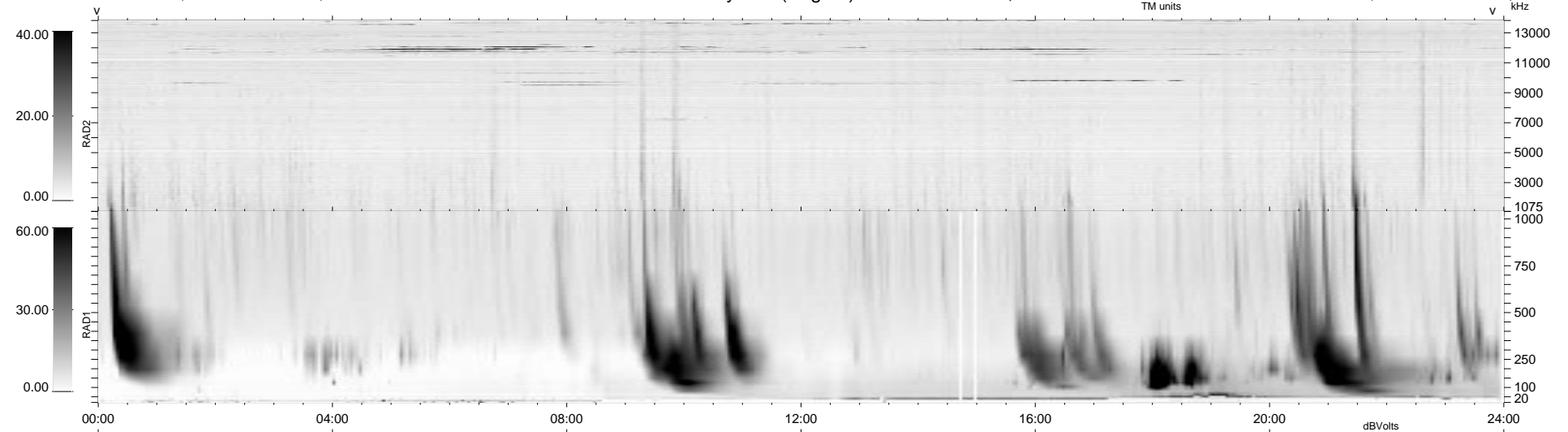
14 bad + 926 good MF/940MF projected (98%) - 0 missing MFs  
 Avg interval = 180 secs  
 Re = 172.66 (171.85, -8.17, -14.57 GSE)

1.7d VMS-SunOS

LZ version = v01

WIND/WAVES Summary Plot (Page 1) for 16-OCT-1995, DOY = 289

DAILY Thu Sep 25, 2008  
 Re = 173.91 (173.21, -6.60, -14.14 GSE)



RAD2  
 Antenna Ey .....  
 Mode LIN(1) .....  
 SUM/SEP SUM .....  
 Toggle OFF .....  
 RAD1  
 Antenna Ex .....  
 Mode LIS(0.2) .....  
 SUM/SEP SUM .....  
 Toggle OFF .....  
 TNR  
 Antenna ExEy .....  
 Mode A-32 .....  
 Sweep ACE .....