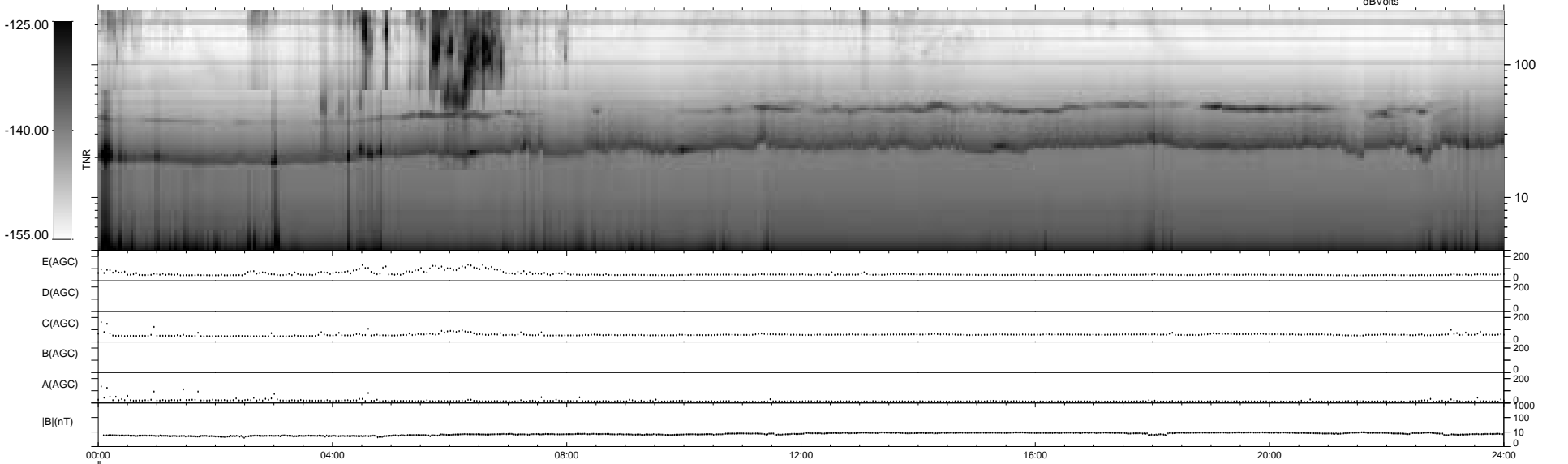
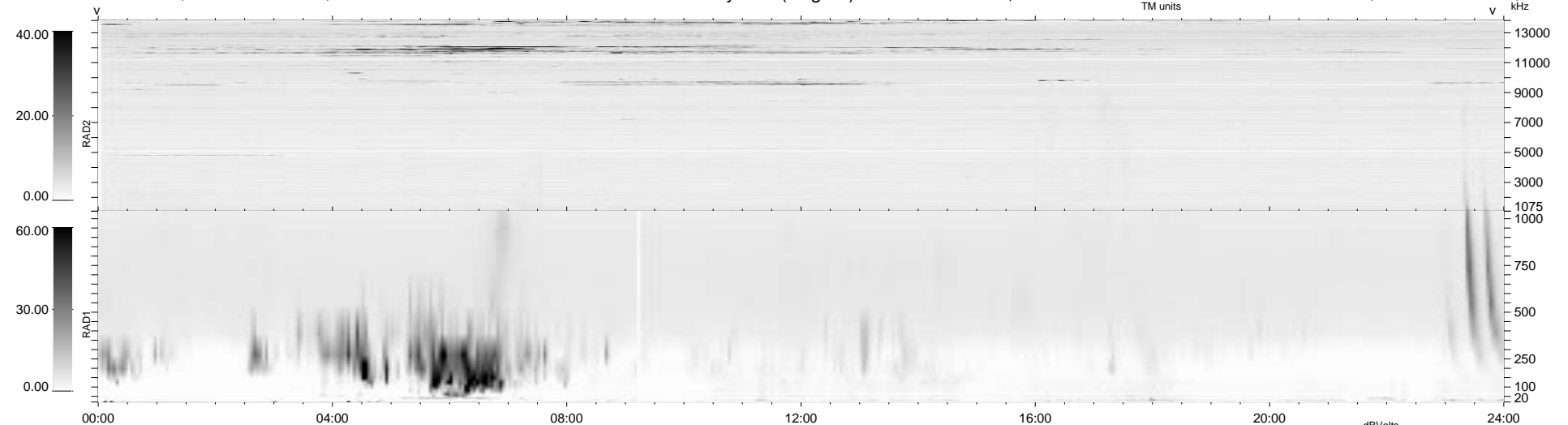


6 bad + 931 good MF/939MF projected (99%) - 2 missing MFs
 Avg interval = 180 secs
 Re = - 161.74 (159.93, -17.88, -16.28 GSE)

1.7d VMS-SunOS LZ version = v08

WIND/WAVES Summary Plot (Page 1) for 10-OCT-1995, DOY = 283

DAILY Thu Sep 25, 2008
 Re = 163.96 (162.36, -16.22, -16.11 GSE)



RAD2
 Antenna
 Mode
 SUM/SEP
 Toggle
 RAD1
 Antenna Ex
 Mode LIS(0.2)
 SUM/SEP SUM
 Toggle OFF
 TNR
 Antenna ExEy
 Mode A-32
 Sweep ACE