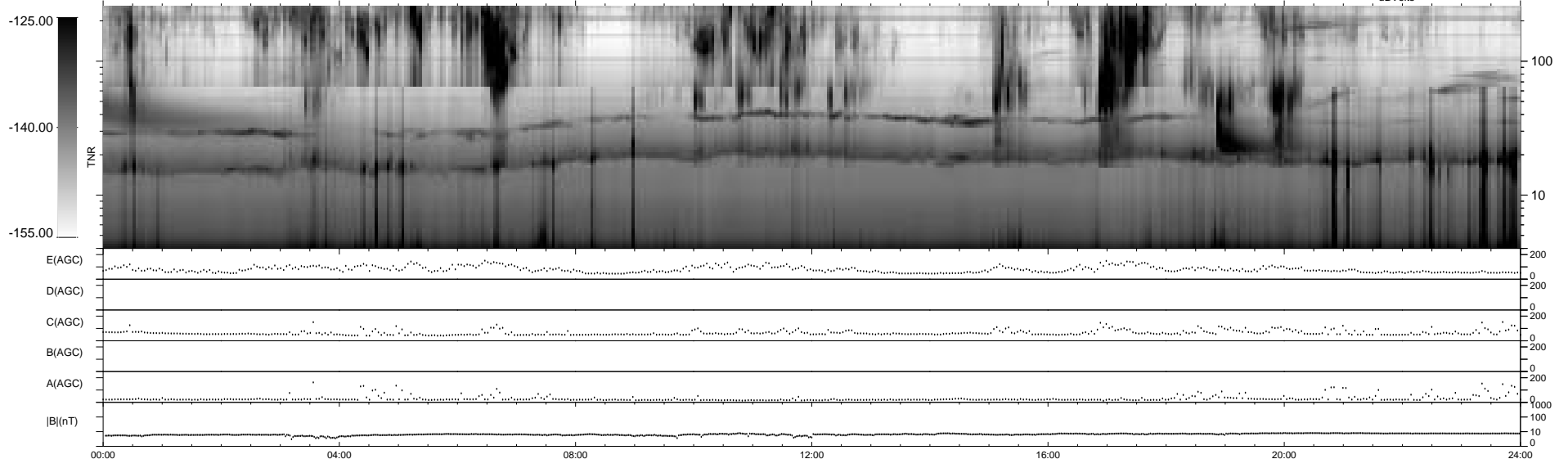
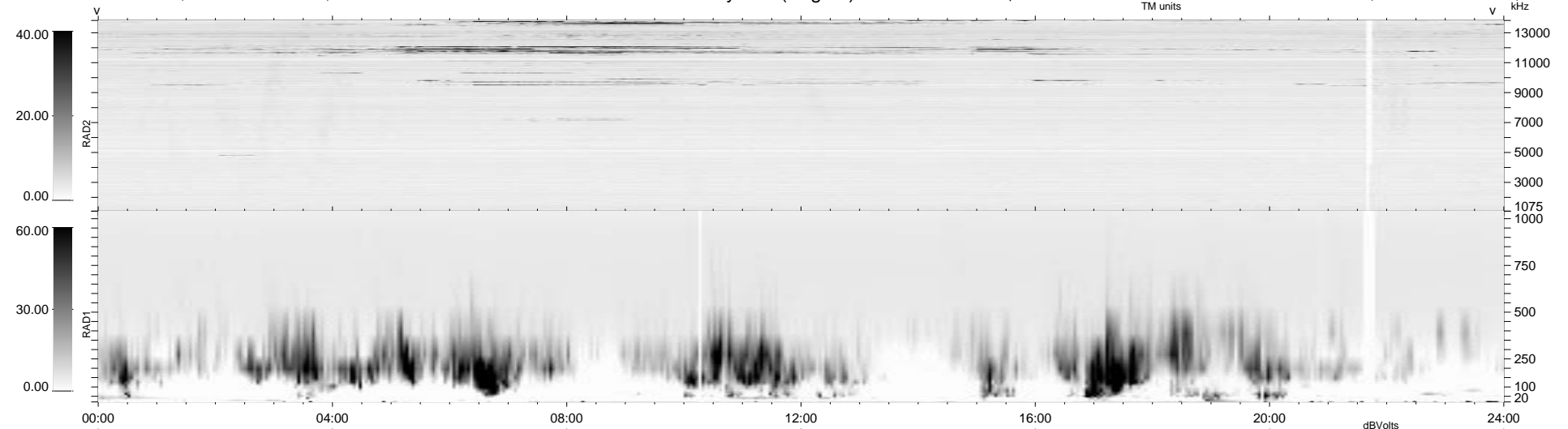


18 bad + 922 good MF/940MF projected (98%) - 0 missing MFs
 Avg interval = 180 secs
 Re = -156.75 (154.42, -21.31, -16.47 GSE)

1.7d VMS-SunOS LZ version = v01
 DAILY Thu Sep 25, 2008
 Re = 159.32 (157.26, -19.59, -16.40 GSE)

WIND/WAVES Summary Plot (Page 1) for 08-OCT-1995, DOY = 281



```

RAD2
Antenna Ey .....
Mode LIN(1) .....
SUM/SEP SUM .....
Toggle OFF .....

RAD1
Antenna Ex .....
Mode LIS(0.2) .....
SUM/SEP SUM .....
Toggle OFF .....

TNR
Antenna ExEy .....
Mode A-32 .....
Sweep ACE .....
  
```